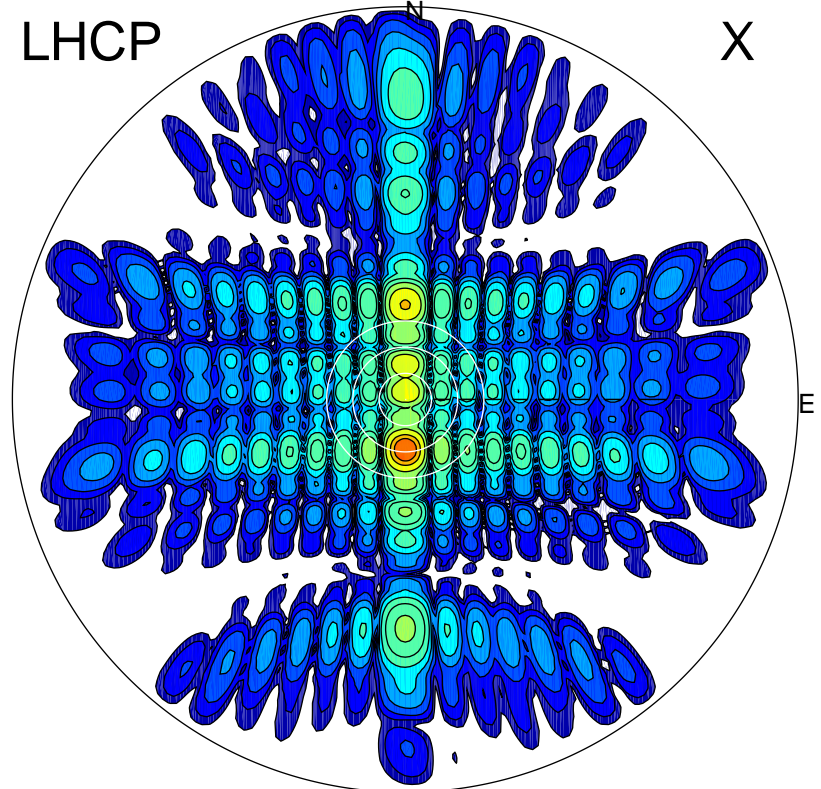


2012-10-20 14:23:27 A1 7.95300000 MHz 400.0 kW

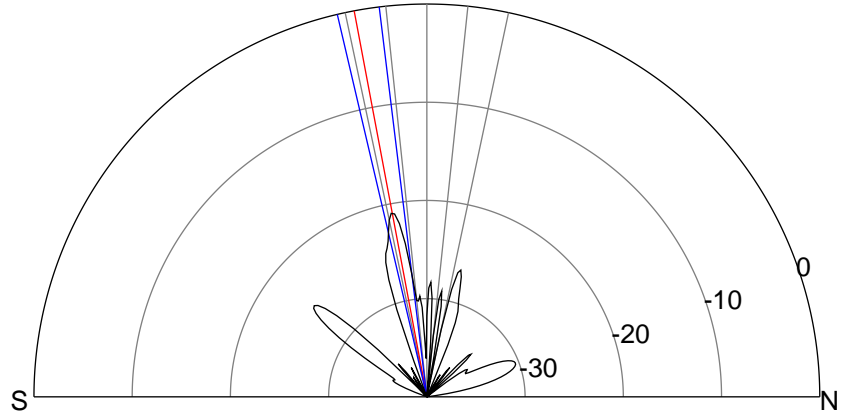
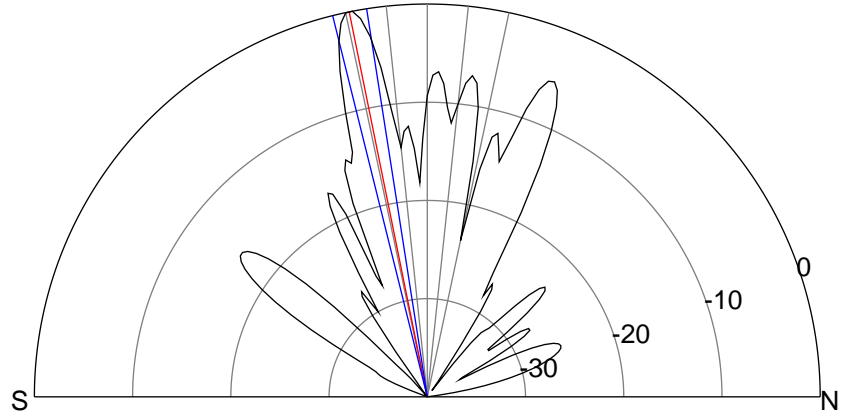
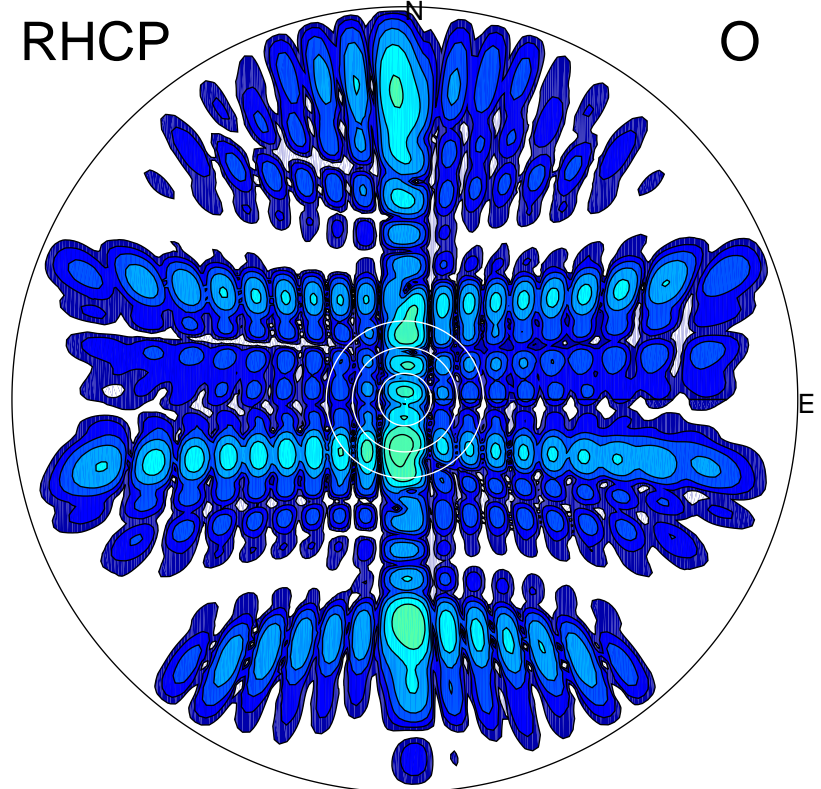
LHCP

X



RHCP

O



ERP 303.9 MW

Peak gain 28.8 dBi at Az 180 Zen 11
RHCP gain 7.8 dBi
N-S peak 28.9 dBi at Zen -11.5
N-S -3 dB beamwidth 5.1 deg.

ERP 2.7 MW

Peak gain 8.3 dBi at Az 185 Zen 11
LHCP gain 28.3 dBi
N-S peak 7.9 dBi at Zen -10.7
N-S -3 dB beamwidth 6.2 deg.