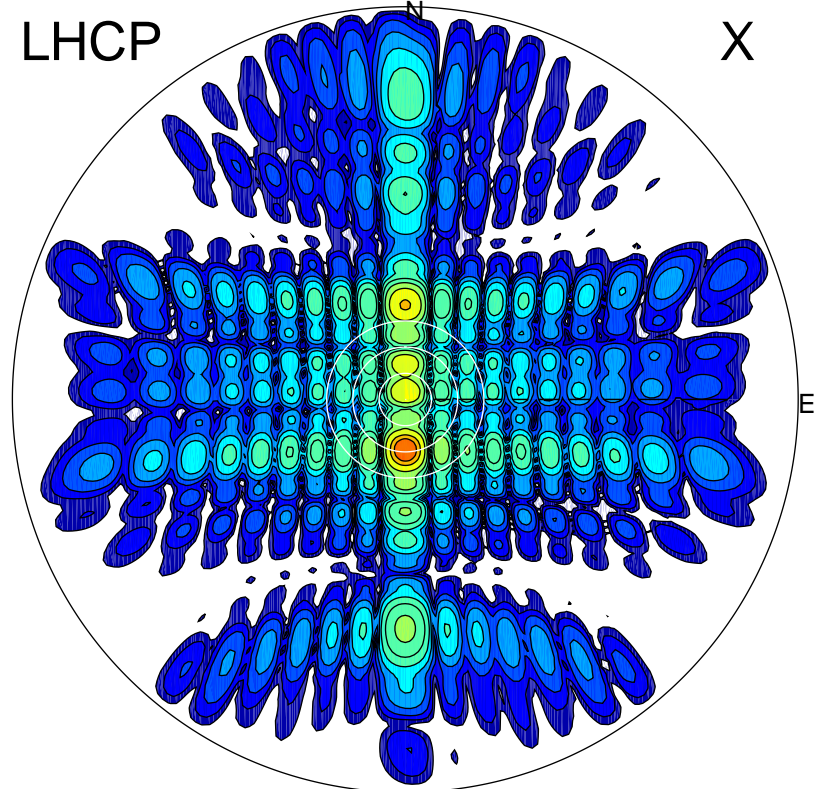


2012-10-20 14:22:27 A1 7.95300000 MHz 574.0 kW

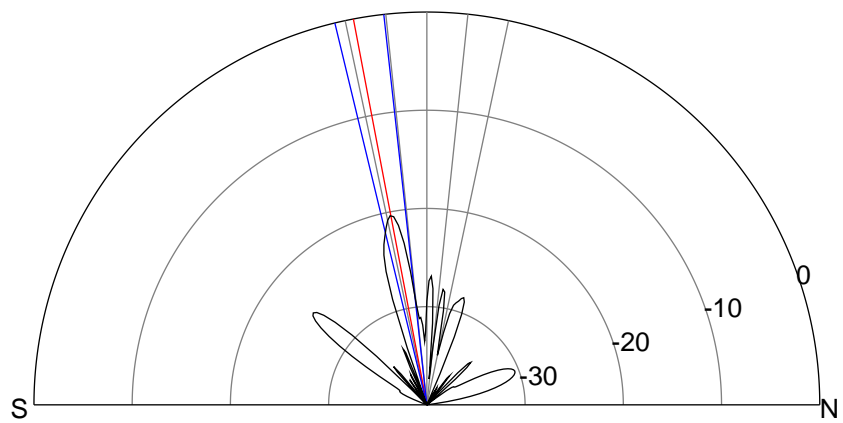
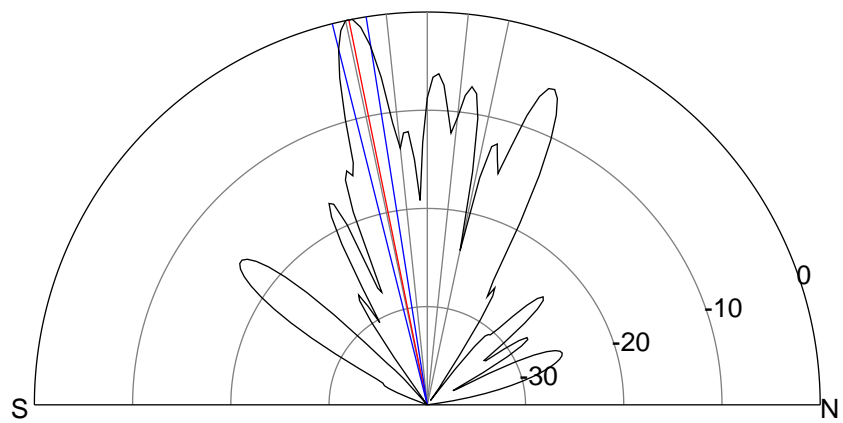
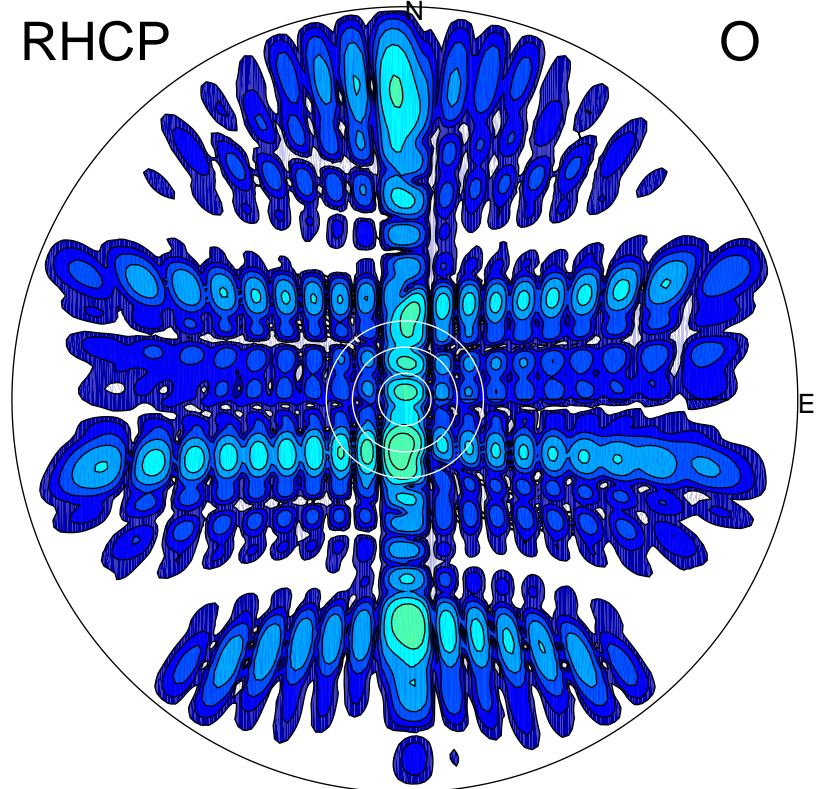
LHCP

X



RHCP

O



### ERP 432.8 MW

Peak gain 28.8 dBi at Az 180 Zen 12  
RHCP gain 8.0 dBi  
N-S peak 28.9 dBi at Zen -11.5  
N-S -3 dB beamwidth 5.0 deg.

### ERP 4.4 MW

Peak gain 8.8 dBi at Az 185 Zen 11  
LHCP gain 28.3 dBi  
N-S peak 8.4 dBi at Zen -10.8  
N-S -3 dB beamwidth 7.3 deg.