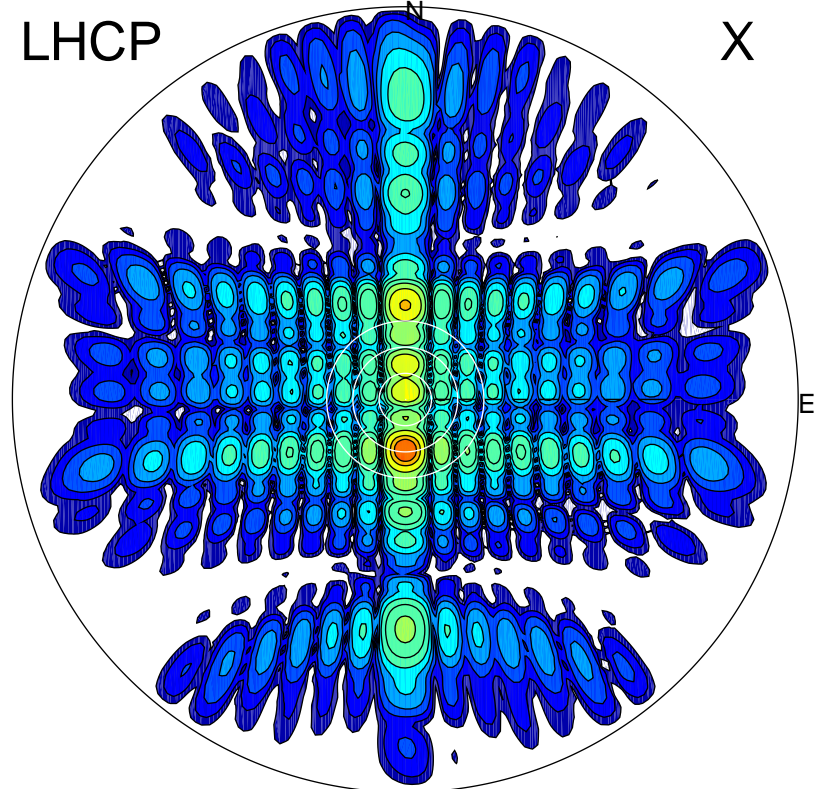


2012-10-20 14:21:27 A1 7.95300000 MHz 762.0 kW

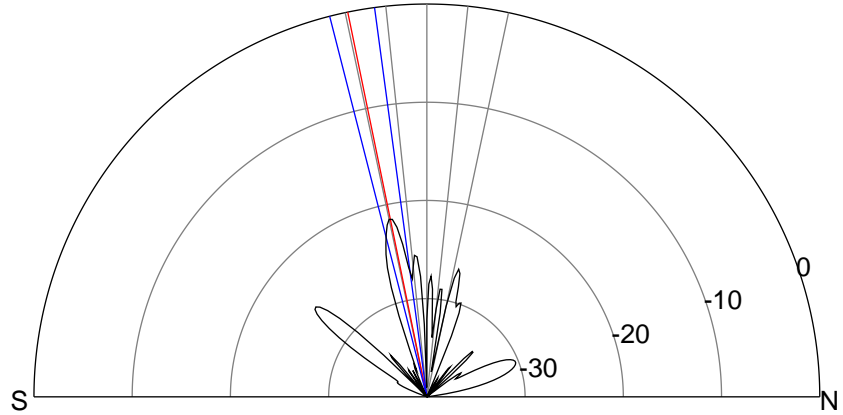
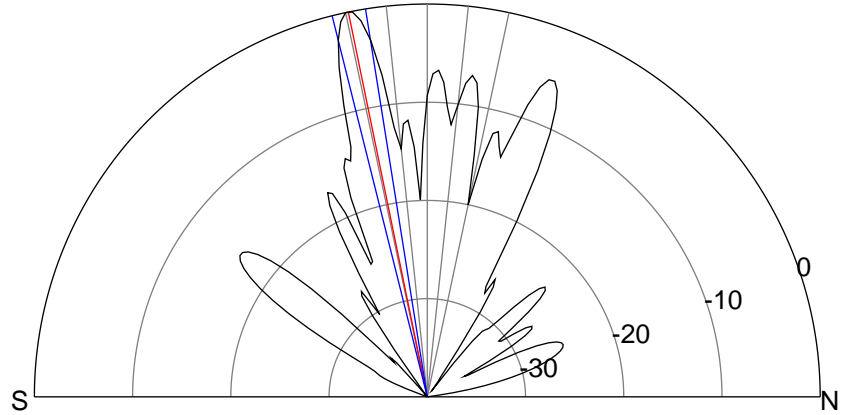
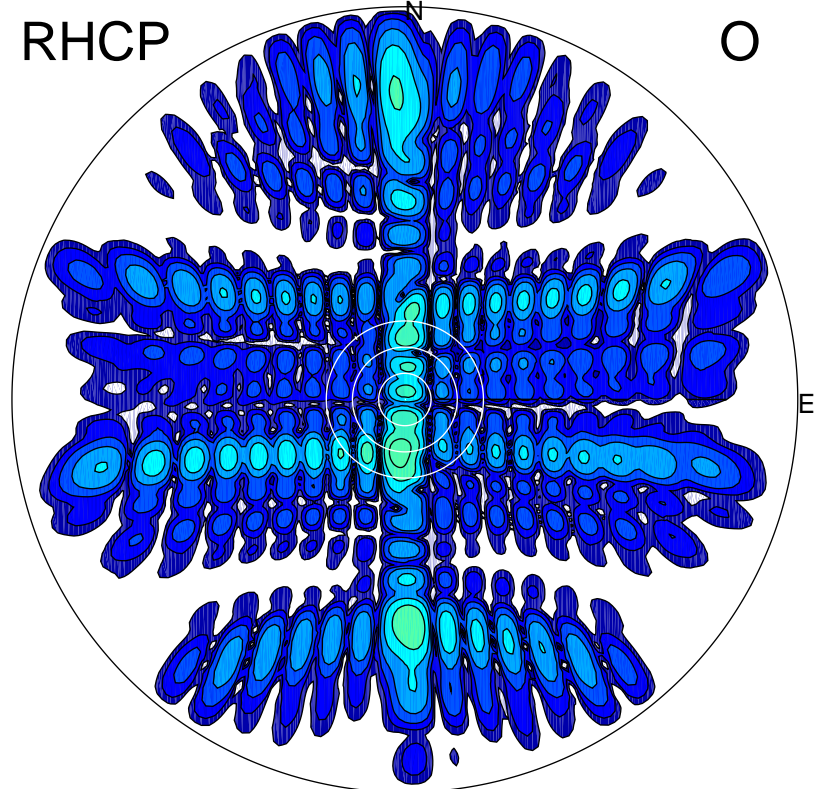
LHCP

X



RHCP

O



### ERP 576.7 MW

Peak gain 28.8 dBi at Az 180 Zen 12  
RHCP gain 7.3 dBi  
N-S peak 28.9 dBi at Zen -11.6  
N-S -3 dB beamwidth 5.0 deg.

### ERP 4.9 MW

Peak gain 8.1 dBi at Az 186 Zen 12  
LHCP gain 28.1 dBi  
N-S peak 7.3 dBi at Zen -11.6  
N-S -3 dB beamwidth 6.7 deg.