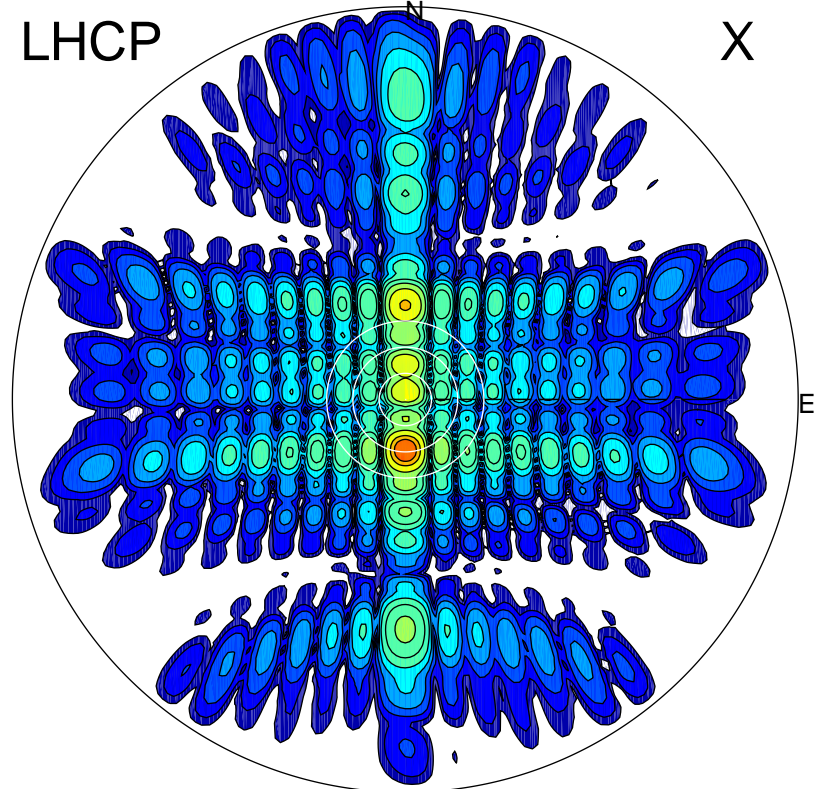


2012-10-20 14:20:27 A1 7.95300000 MHz 757.0 kW

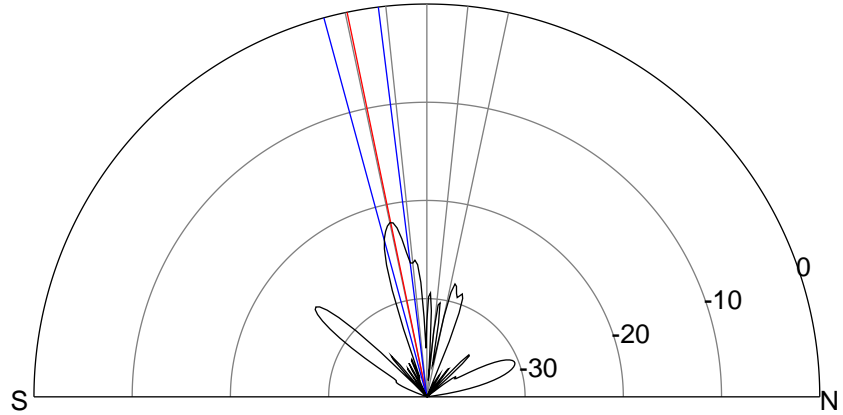
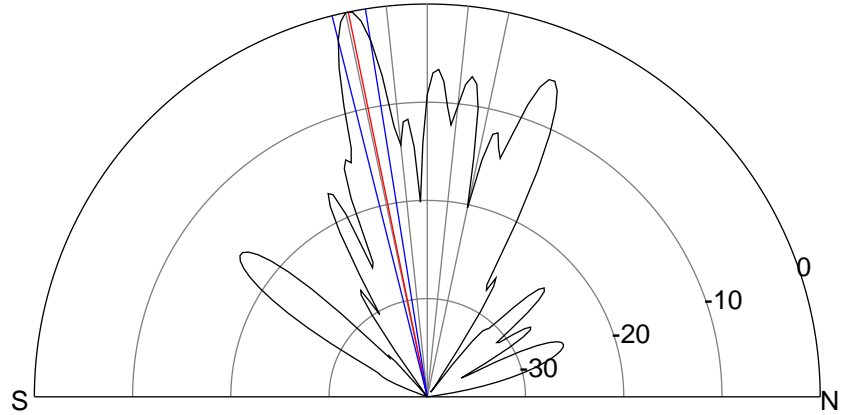
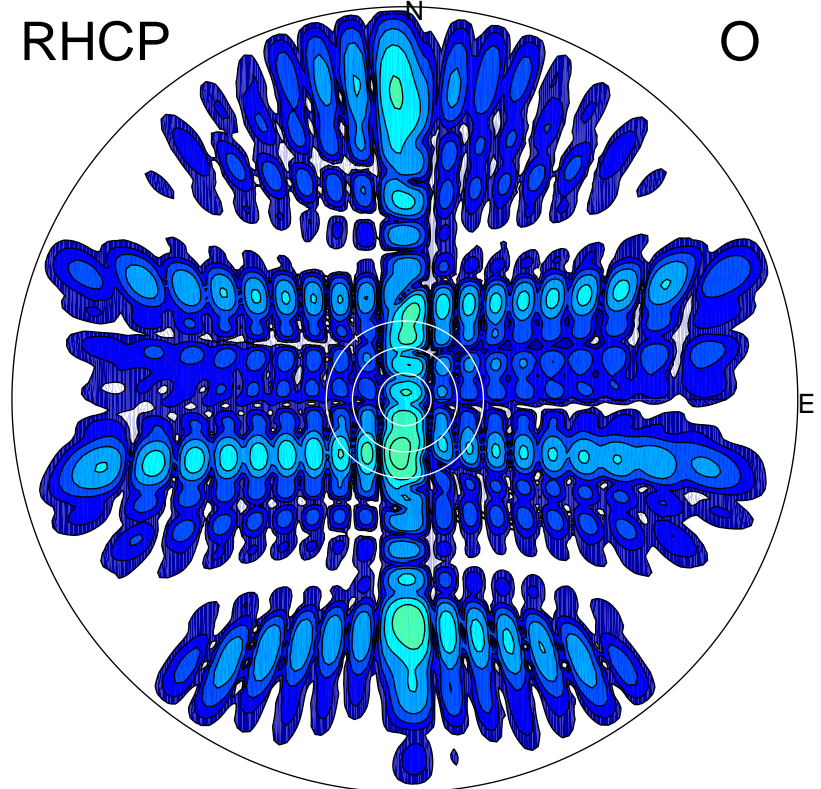
LHCP

X



RHCP

O



ERP 574.6 MW

Peak gain 28.8 dBi at Az 180 Zen 12
RHCP gain 6.9 dBi
N-S peak 28.9 dBi at Zen -11.6
N-S -3 dB beamwidth 5.0 deg.

ERP 4.5 MW

Peak gain 7.8 dBi at Az 186 Zen 12
LHCP gain 28.1 dBi
N-S peak 6.9 dBi at Zen -11.7
N-S -3 dB beamwidth 8.1 deg.