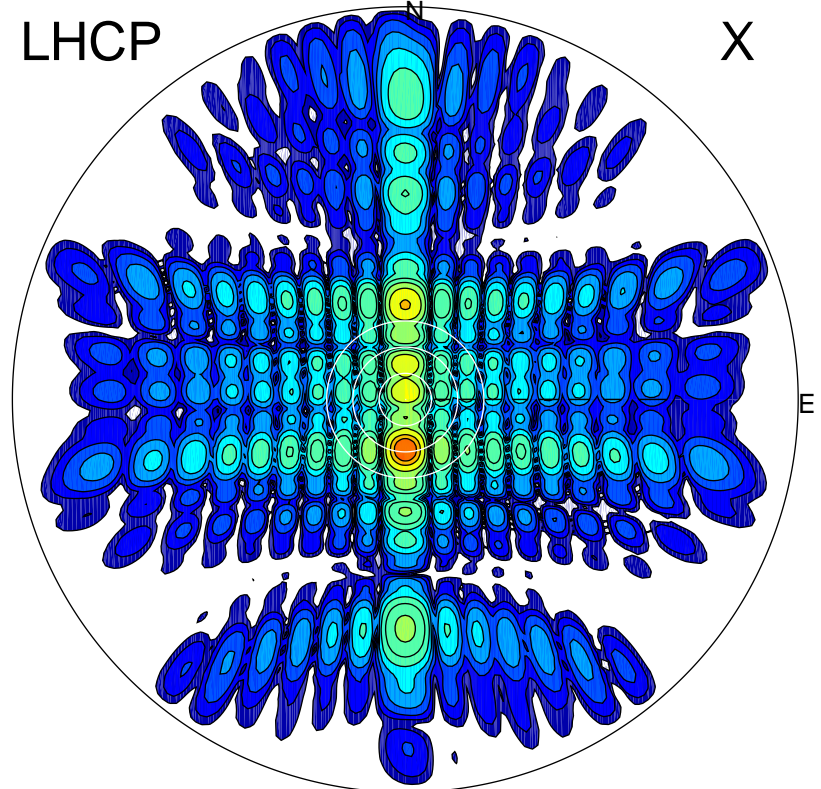


2012-10-20 14:18:27 A1 7.95300000 MHz 418.0 kW

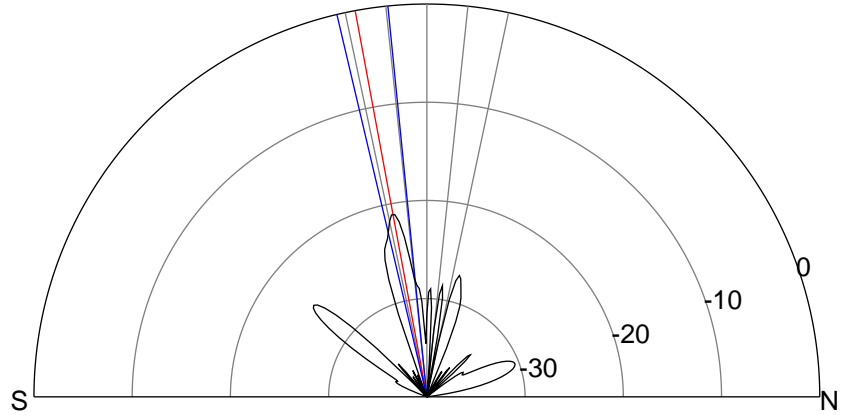
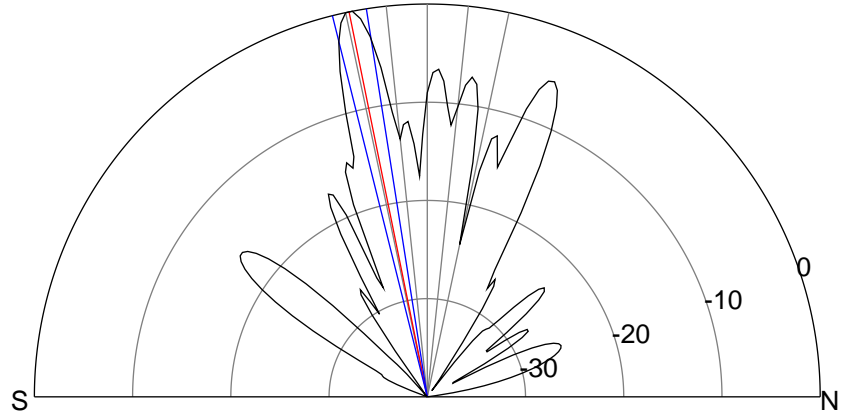
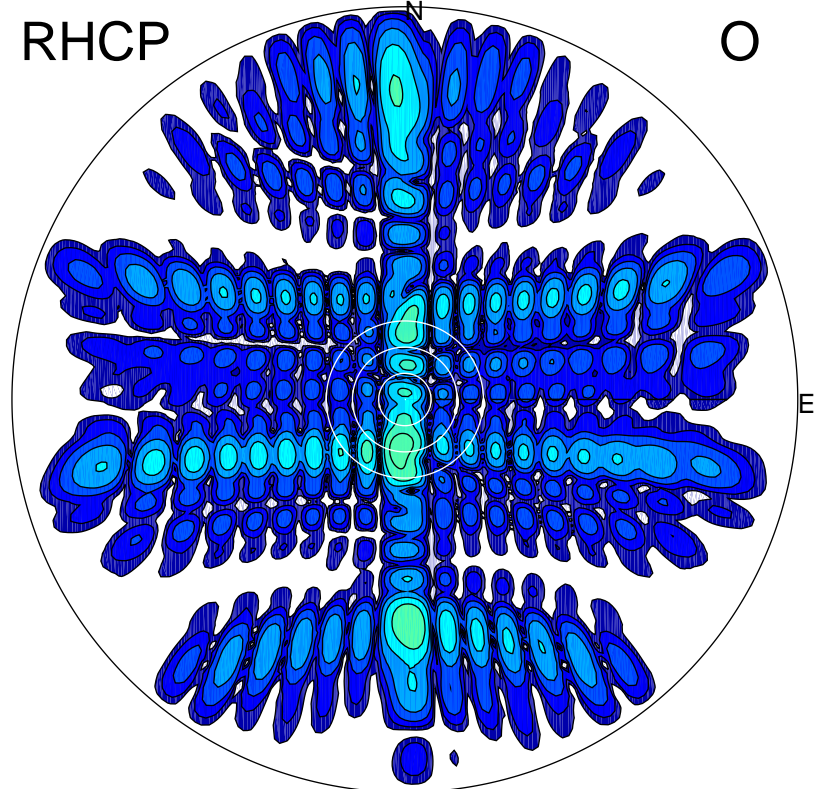
LHCP

X



RHCP

O



ERP 316.9 MW

Peak gain 28.8 dBi at Az 180 Zen 11
RHCP gain 7.7 dBi
N-S peak 28.9 dBi at Zen -11.5
N-S -3 dB beamwidth 5.1 deg.

ERP 2.7 MW

Peak gain 8.1 dBi at Az 185 Zen 11
LHCP gain 28.3 dBi
N-S peak 7.7 dBi at Zen -10.5
N-S -3 dB beamwidth 7.5 deg.