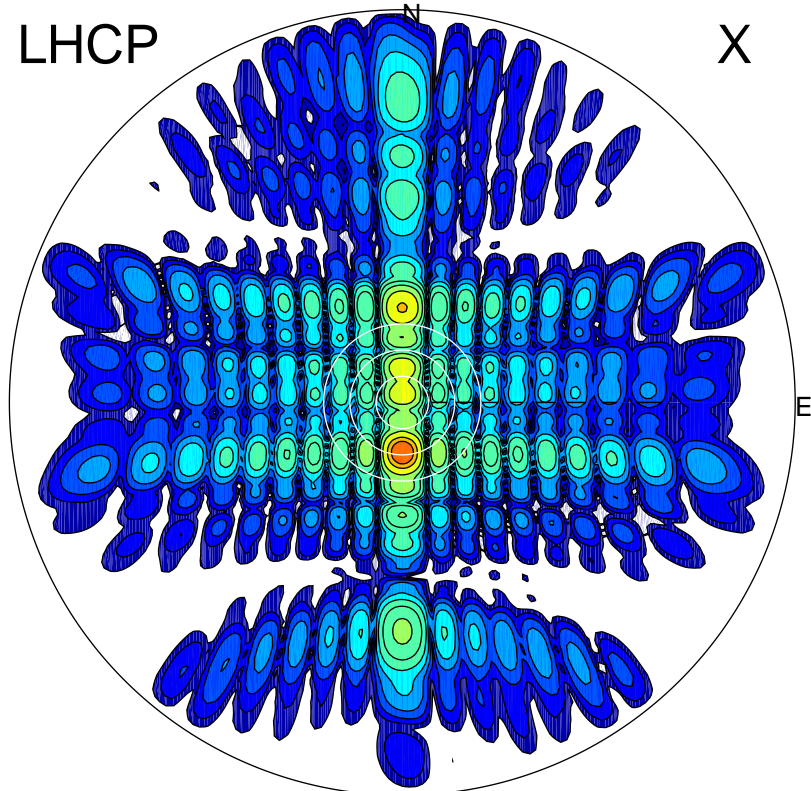


2012-10-20 13:55:27 A1 7.95300000 MHz 73.0 kW

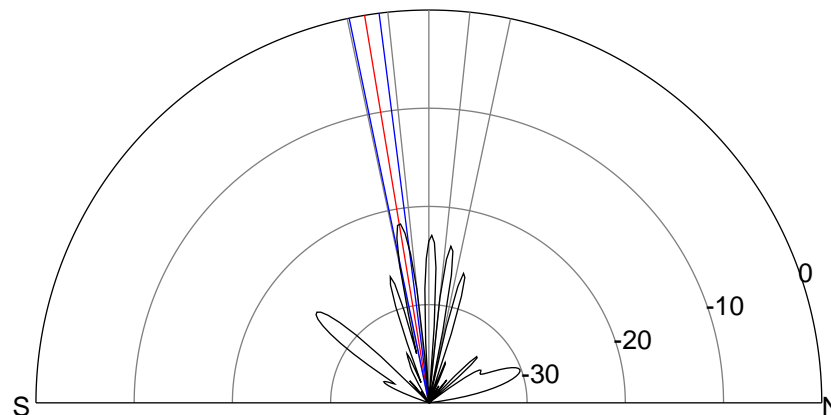
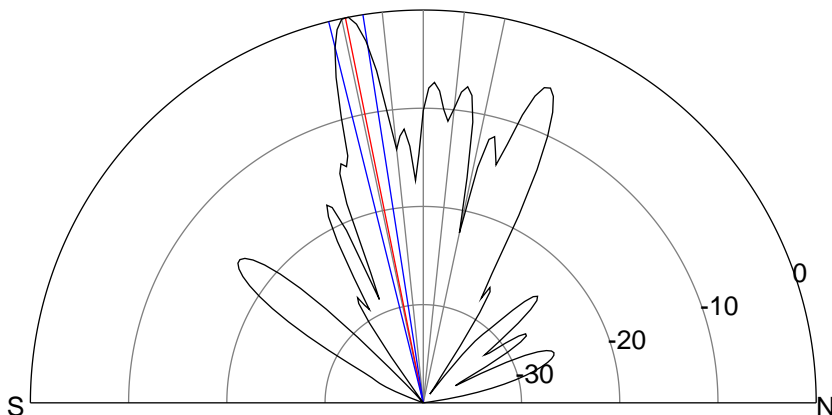
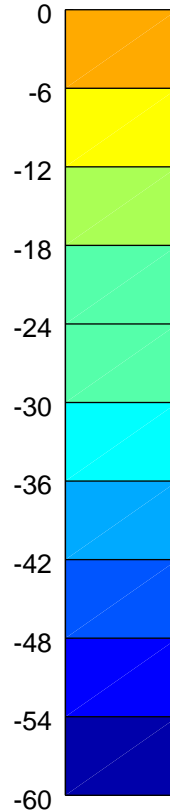
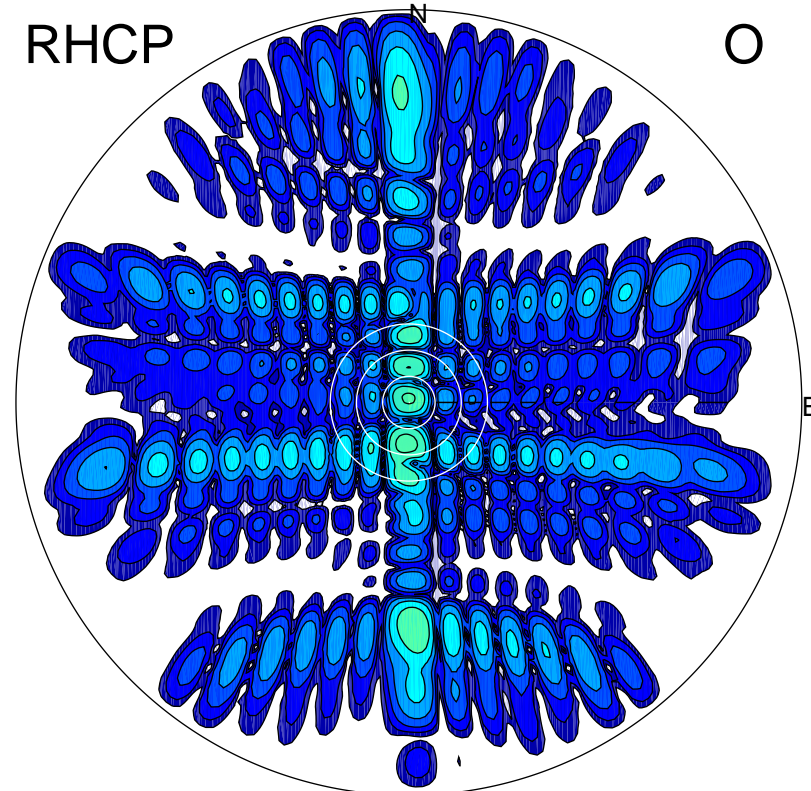
LHCP

X



RHCP

O



### ERP 55.9 MW

Peak gain 28.8 dBi at Az 180 Zen 11

RHCP gain 5.9 dBi

N-S peak 28.9 dBi at Zen -11.4

N-S -3 dB beamwidth 5.1 deg.

### ERP 0.4 MW

Peak gain 7.4 dBi at Az 184 Zen 9

LHCP gain 25.9 dBi

N-S peak 7.4 dBi at Zen -9.4

N-S -3 dB beamwidth 4.4 deg.