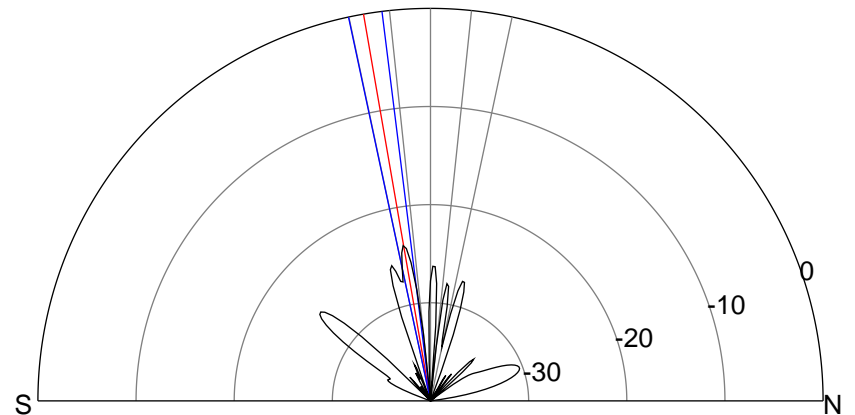
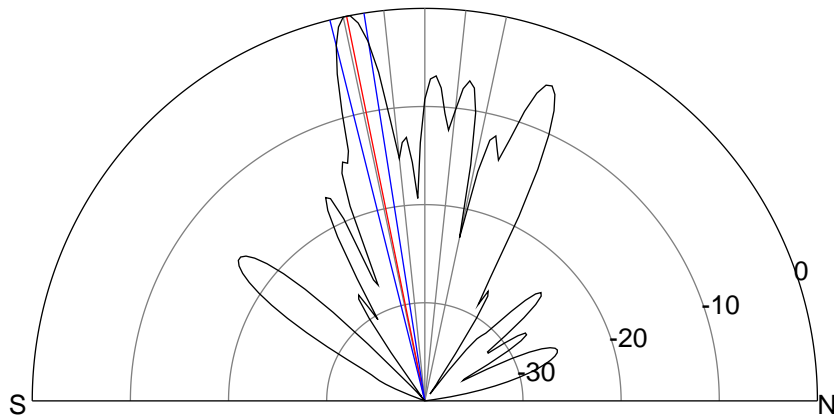
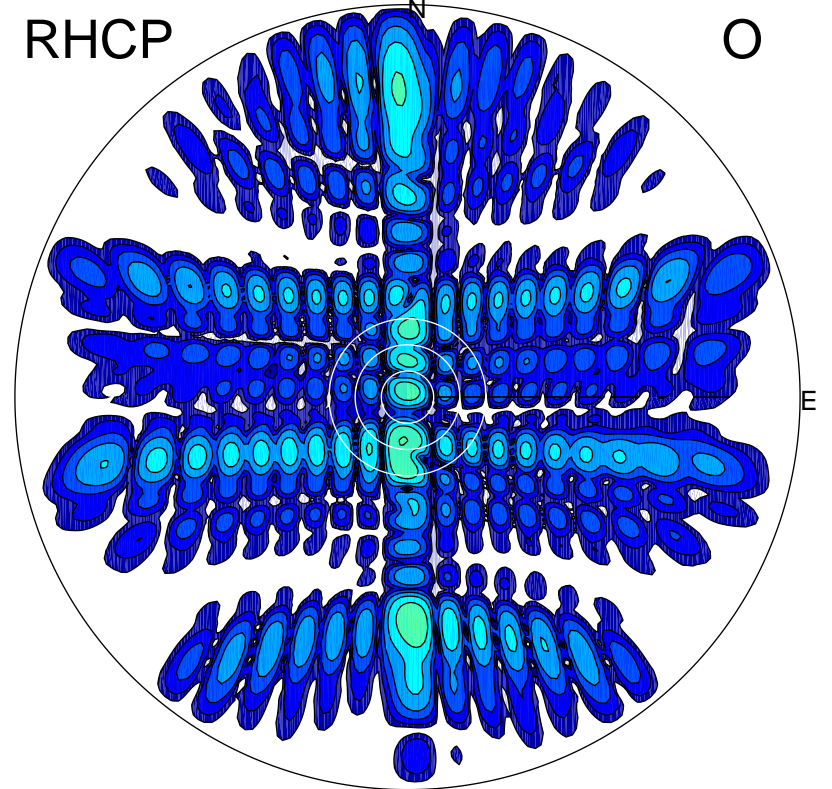
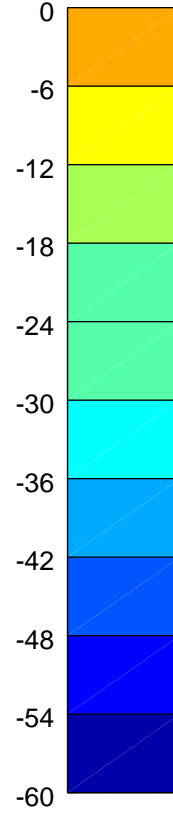
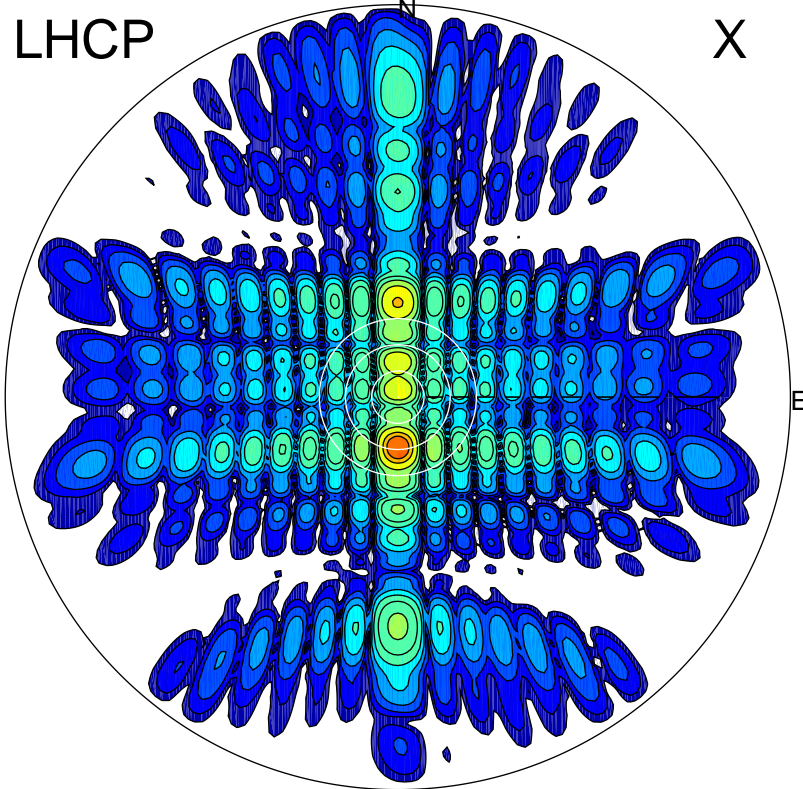


2012-10-20 13:54:27 A1 7.95300000 MHz 237.0 kW



### ERP 180.0 MW

Peak gain 28.8 dBi at Az 180 Zen 11  
RHCP gain 4.2 dBi  
N-S peak 28.9 dBi at Zen -11.5  
N-S -3 dB beamwidth 5.1 deg.

### ERP 0.8 MW

Peak gain 5.2 dBi at Az 185 Zen 10  
LHCP gain 27.5 dBi  
N-S peak 4.9 dBi at Zen -9.8  
N-S -3 dB beamwidth 5.0 deg.