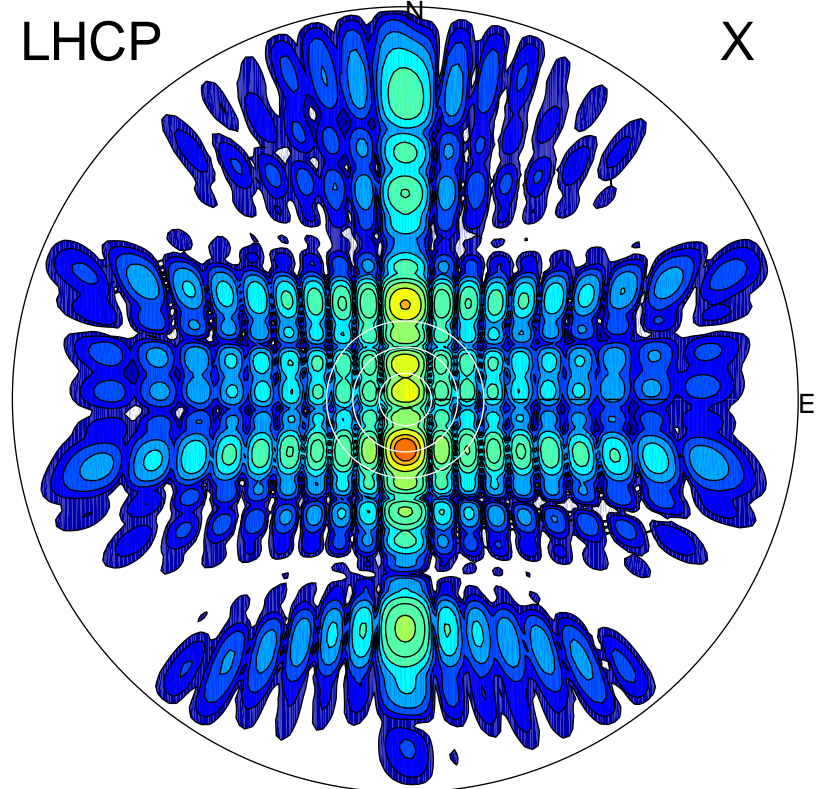


2012-10-20 13:53:27 A1 7.95300000 MHz 408.0 kW

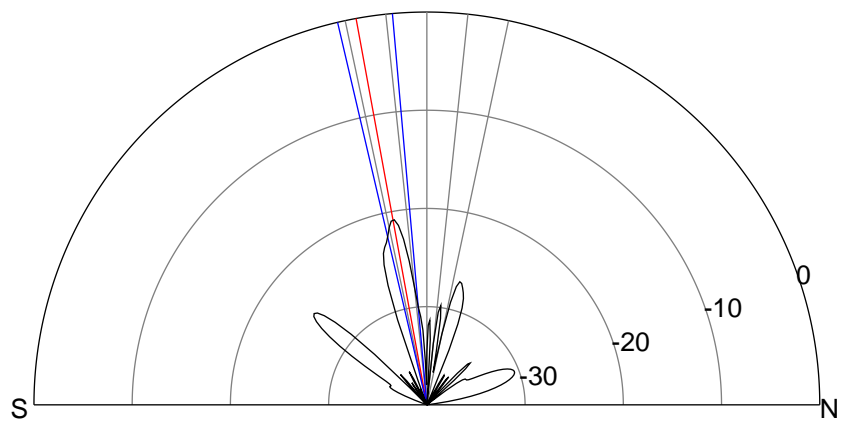
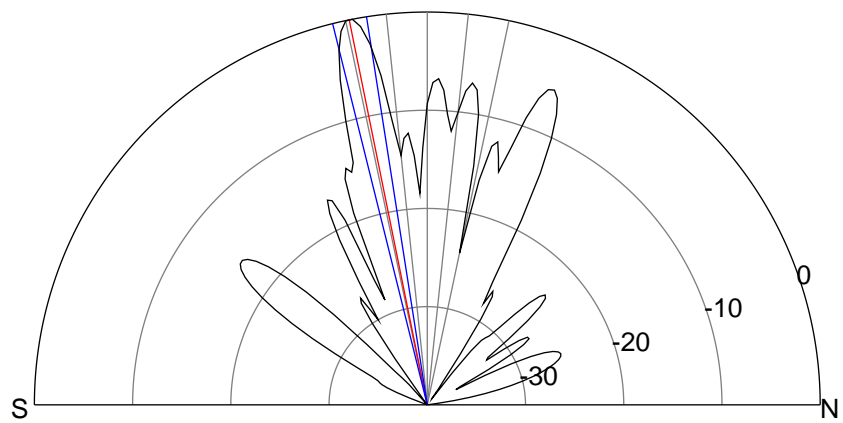
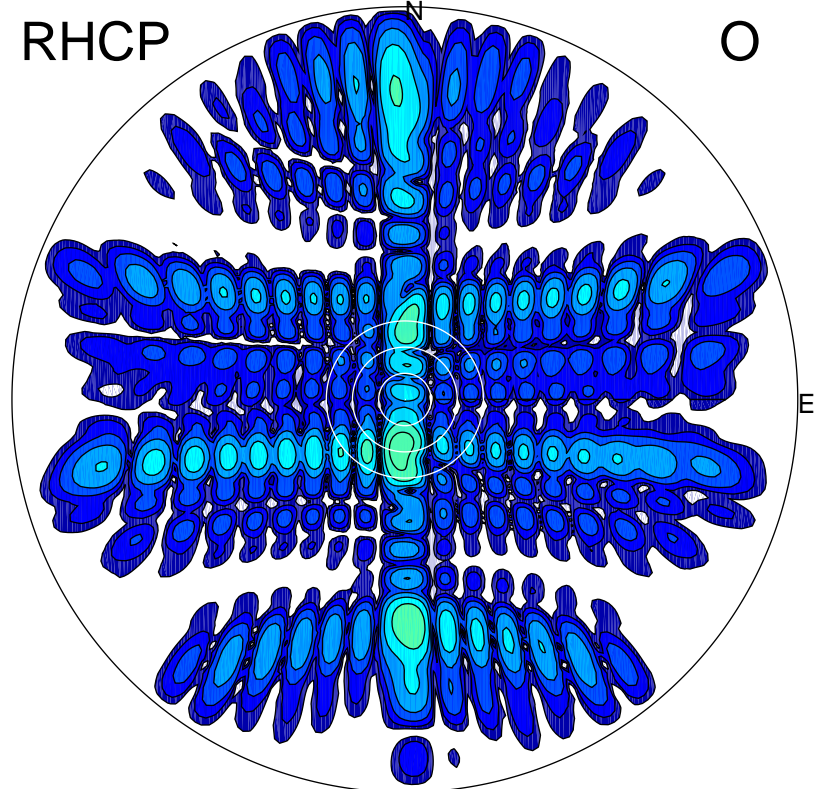
LHCP

X



RHCP

O



### ERP 309.9 MW

Peak gain 28.8 dBi at Az 180 Zen 11  
RHCP gain 7.9 dBi  
N-S peak 28.9 dBi at Zen -11.5  
N-S -3 dB beamwidth 5.0 deg.

### ERP 2.8 MW

Peak gain 8.3 dBi at Az 186 Zen 11  
LHCP gain 28.2 dBi  
N-S peak 8.0 dBi at Zen -10.4  
N-S -3 dB beamwidth 8.1 deg.