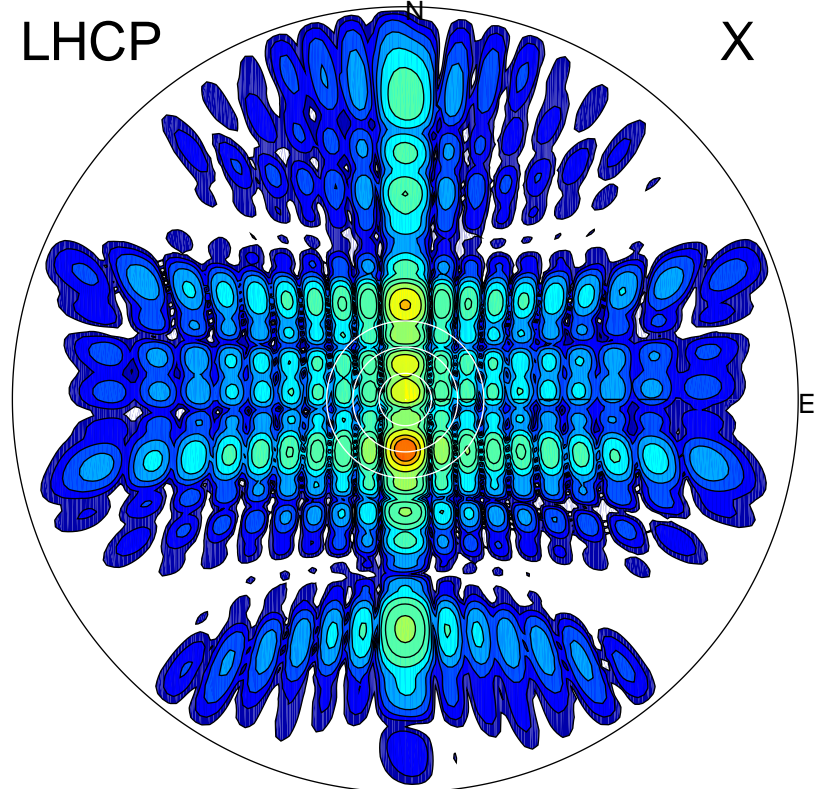


2012-10-20 13:52:27 A1 7.95300000 MHz 584.0 kW

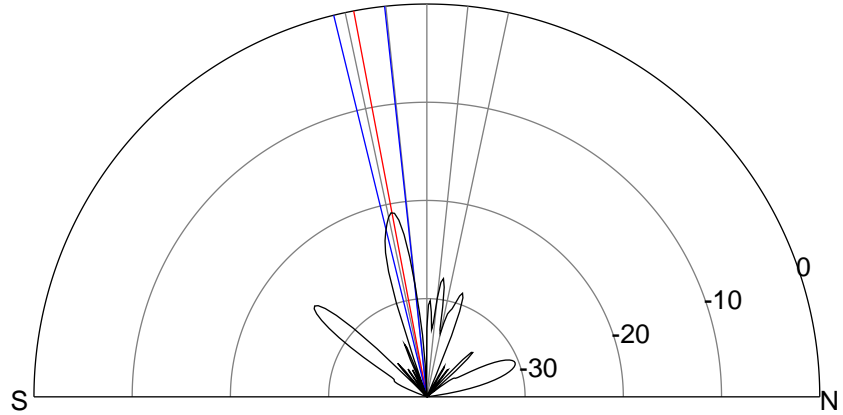
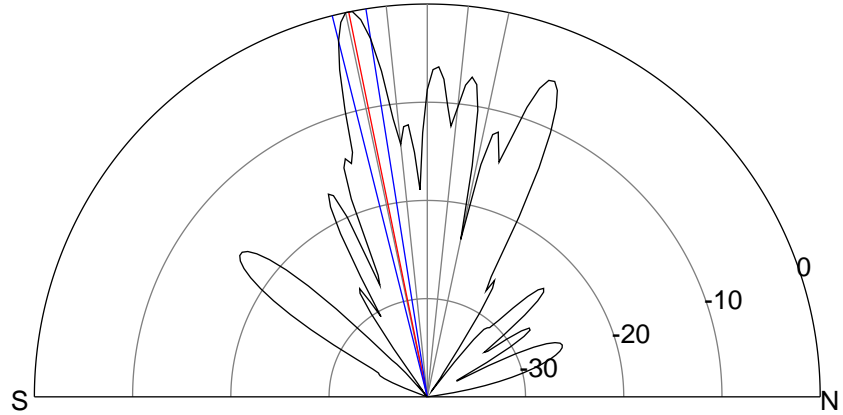
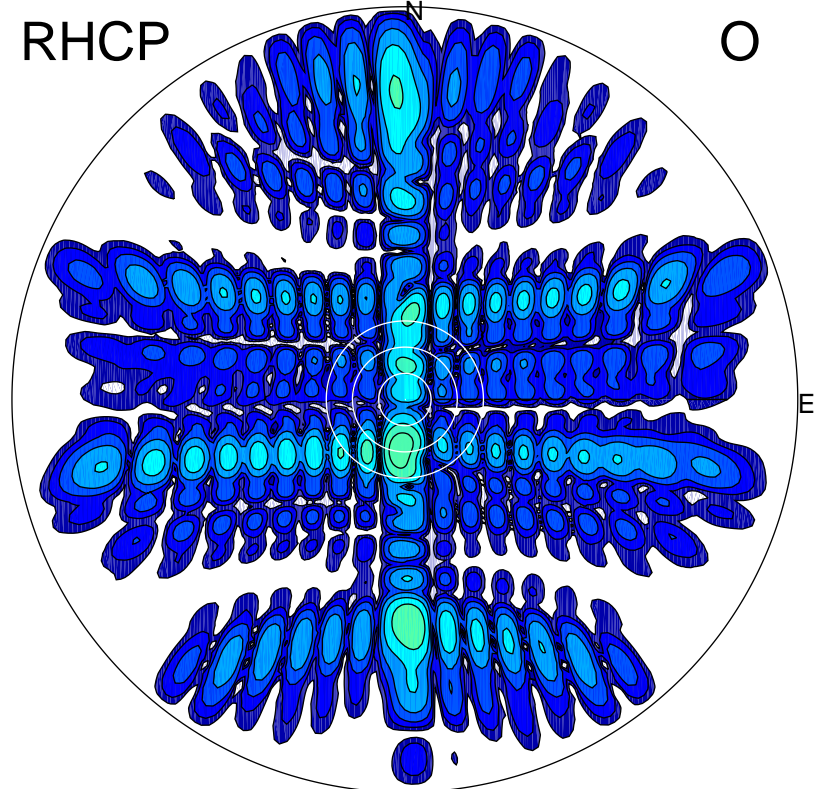
LHCP

X



RHCP

O



ERP 440.8 MW

Peak gain 28.8 dBi at Az 180 Zen 12
RHCP gain 7.5 dBi
N-S peak 28.9 dBi at Zen -11.5
N-S -3 dB beamwidth 5.0 deg.

ERP 4.0 MW

Peak gain 8.4 dBi at Az 186 Zen 11
LHCP gain 28.1 dBi
N-S peak 7.9 dBi at Zen -10.7
N-S -3 dB beamwidth 7.5 deg.