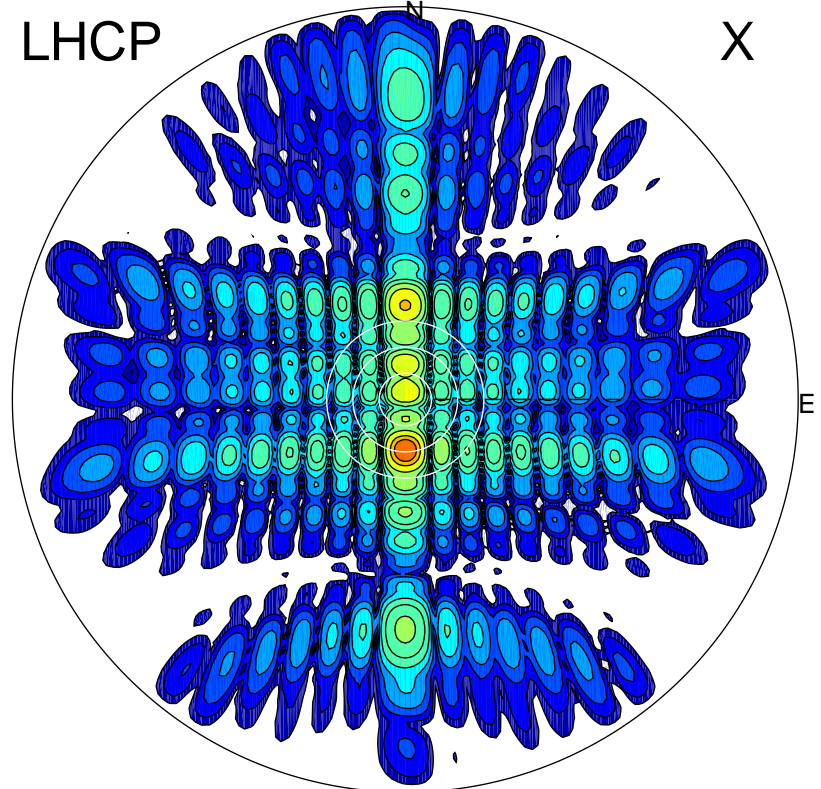


2012-10-20 13:51:27 A1 7.95300000 MHz 768.0 kW

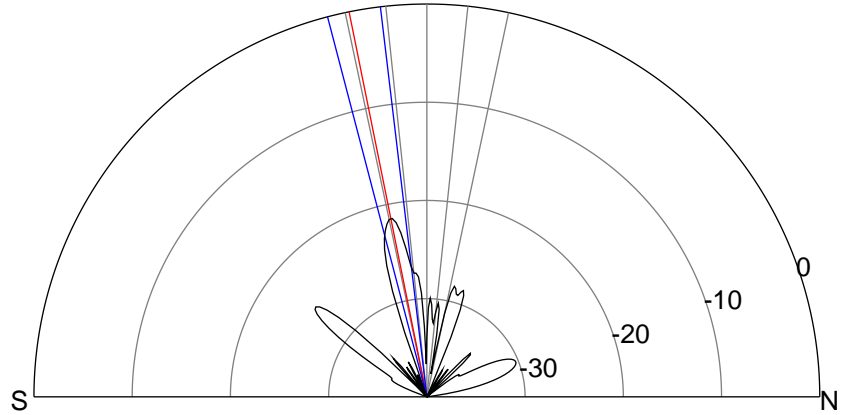
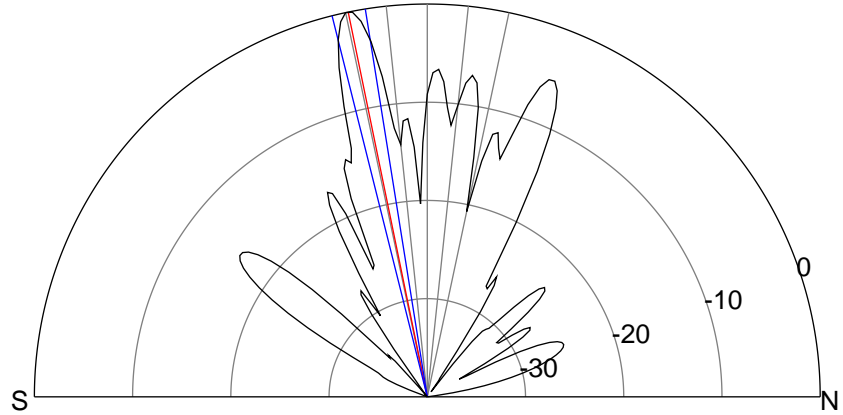
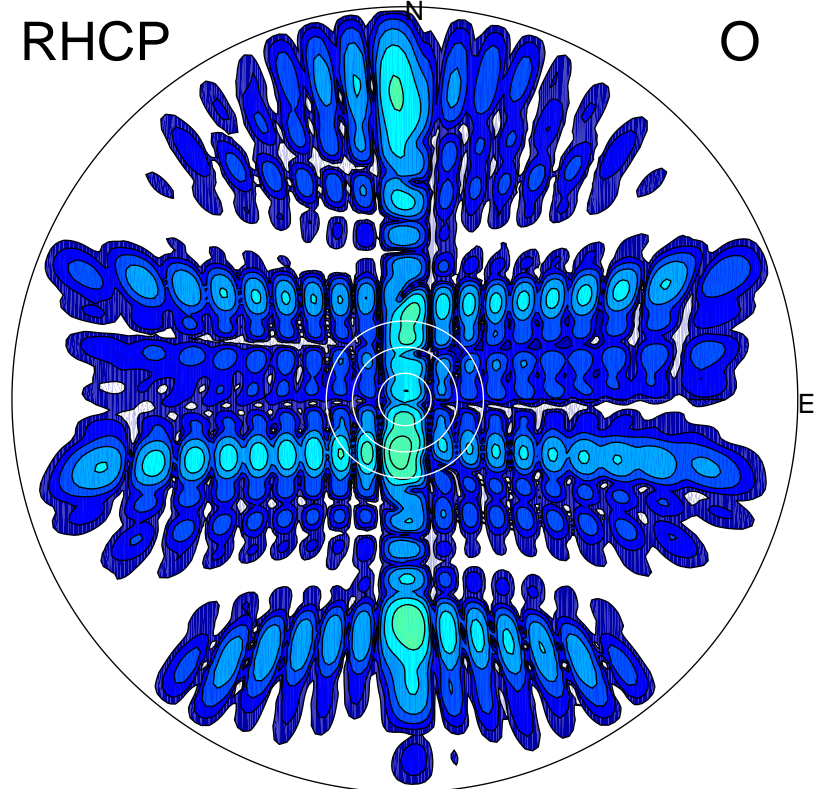
LHCP

X



RHCP

O



ERP 582.6 MW

Peak gain 28.8 dBi at Az 180 Zen 12
RHCP gain 7.3 dBi
N-S peak 28.9 dBi at Zen -11.6
N-S -3 dB beamwidth 4.9 deg.

ERP 4.9 MW

Peak gain 8.1 dBi at Az 186 Zen 12
LHCP gain 28.1 dBi
N-S peak 7.3 dBi at Zen -11.4
N-S -3 dB beamwidth 7.9 deg.