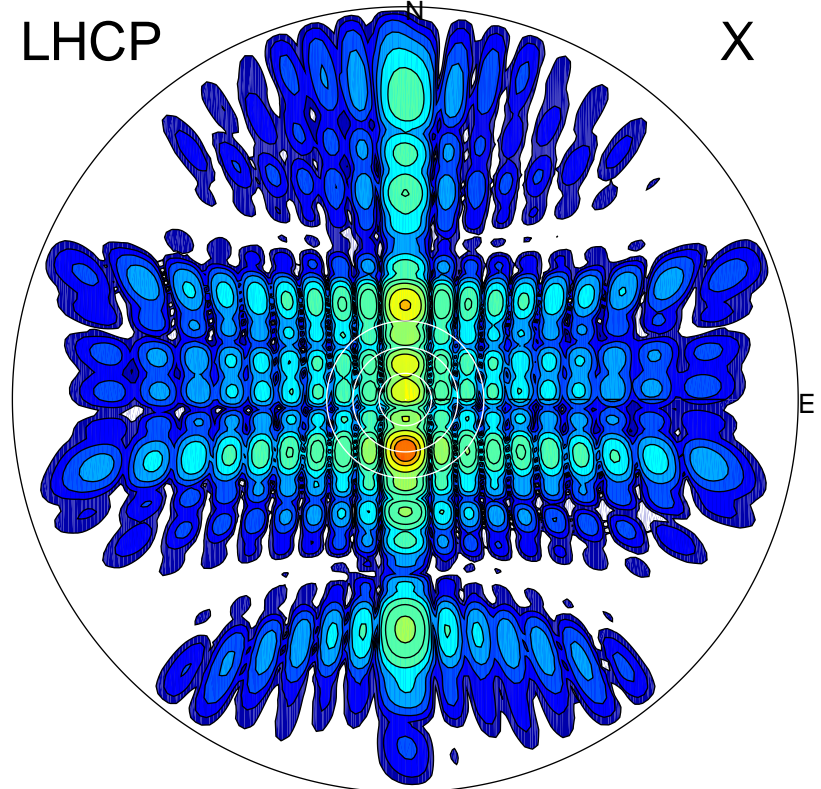


2012-10-20 13:50:27 A1 7.95300000 MHz 766.0 kW

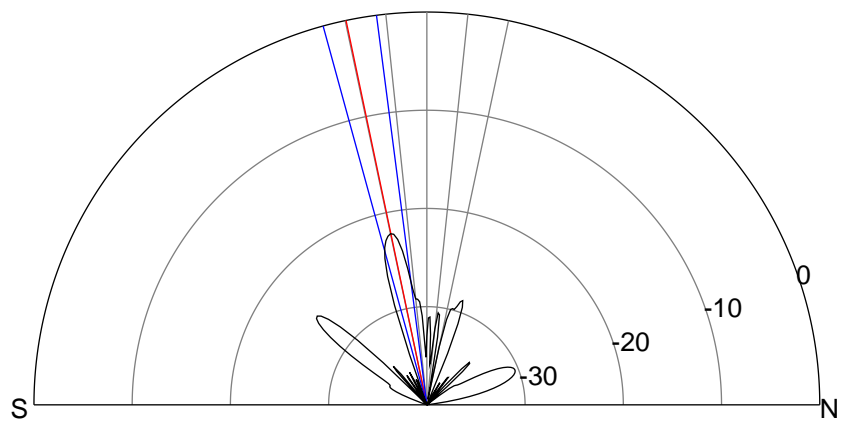
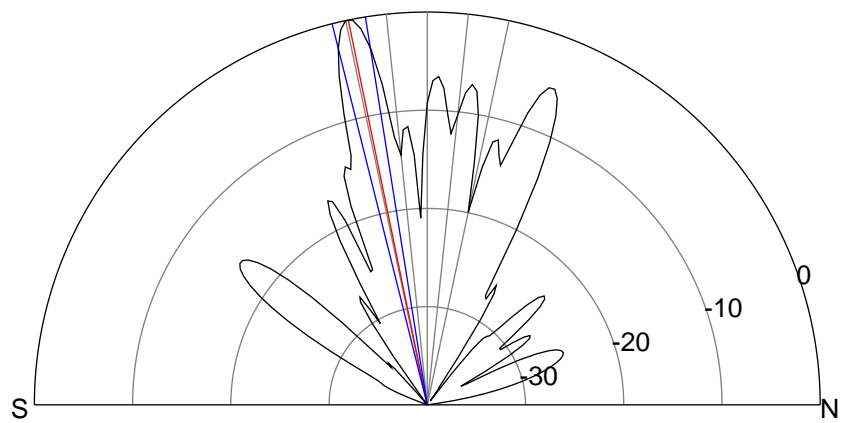
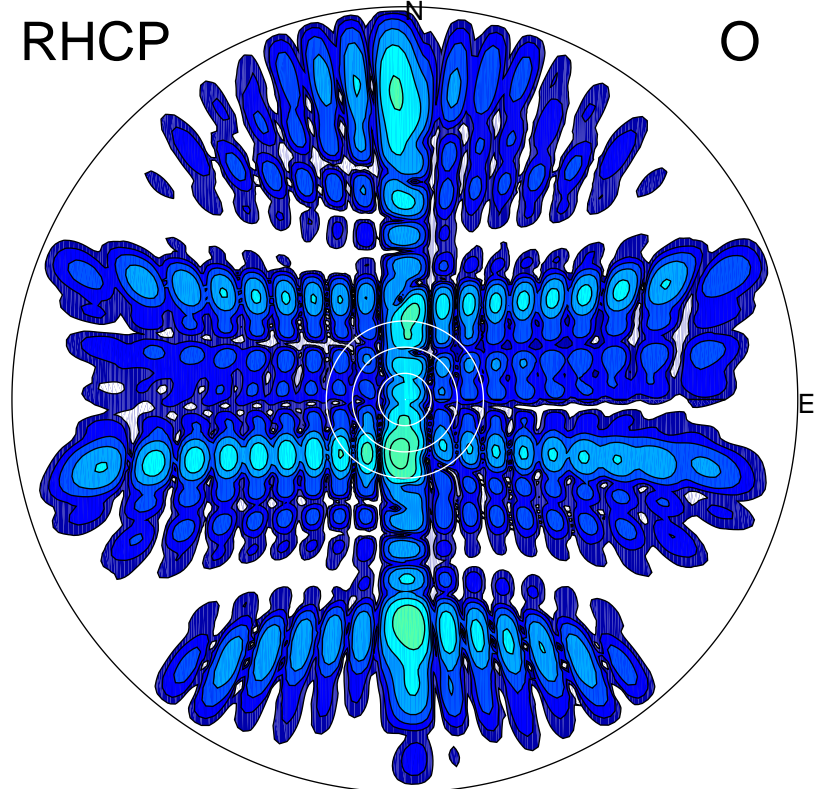
LHCP

X



RHCP

O



### ERP 581.6 MW

Peak gain 28.8 dBi at Az 180 Zen 12  
RHCP gain 6.6 dBi  
N-S peak 28.9 dBi at Zen -11.6  
N-S -3 dB beamwidth 5.0 deg.

### ERP 4.4 MW

Peak gain 7.5 dBi at Az 186 Zen 12  
LHCP gain 28.1 dBi  
N-S peak 6.6 dBi at Zen -11.9  
N-S -3 dB beamwidth 7.9 deg.