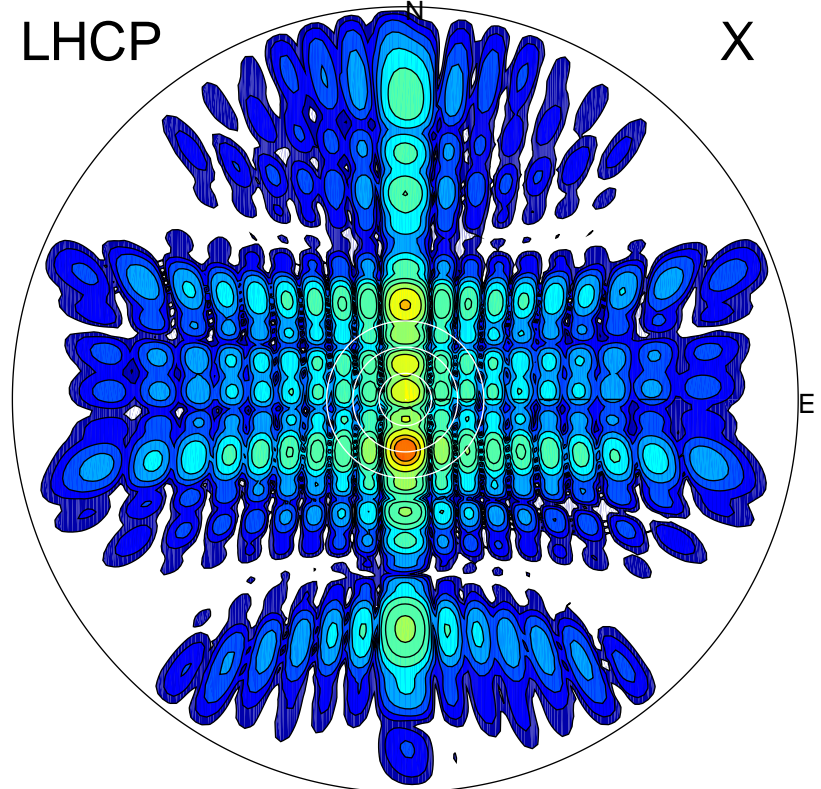


2012-10-20 13:49:27 A1 7.95300000 MHz 586.0 kW

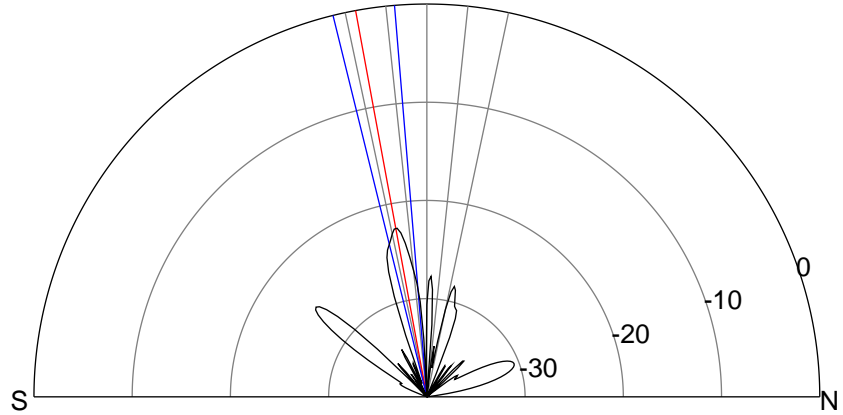
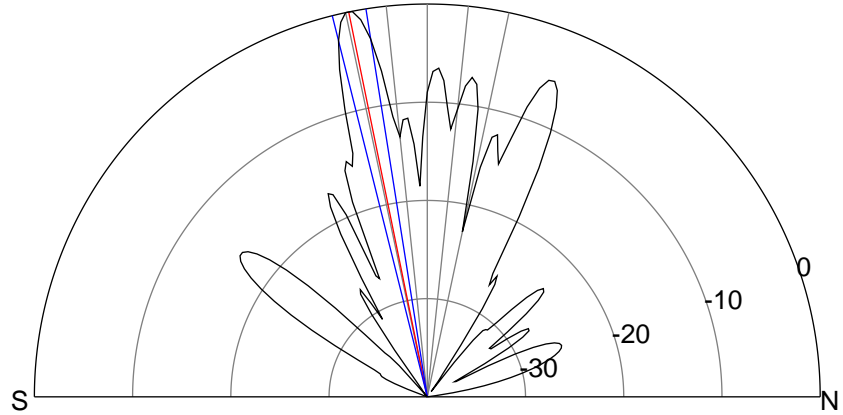
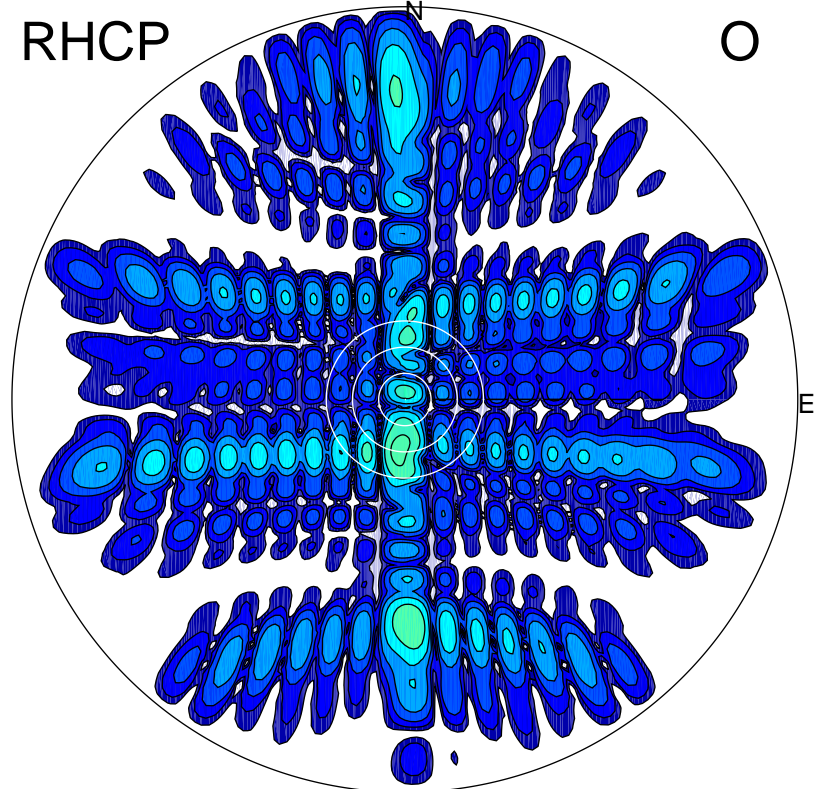
LHCP

X



RHCP

O



ERP 444.4 MW

Peak gain 28.8 dBi at Az 180 Zen 12
RHCP gain 5.8 dBi
N-S peak 28.9 dBi at Zen -11.5
N-S -3 dB beamwidth 5.0 deg.

ERP 2.8 MW

Peak gain 6.9 dBi at Az 186 Zen 11
LHCP gain 28.1 dBi
N-S peak 6.3 dBi at Zen -10.5
N-S -3 dB beamwidth 9.1 deg.