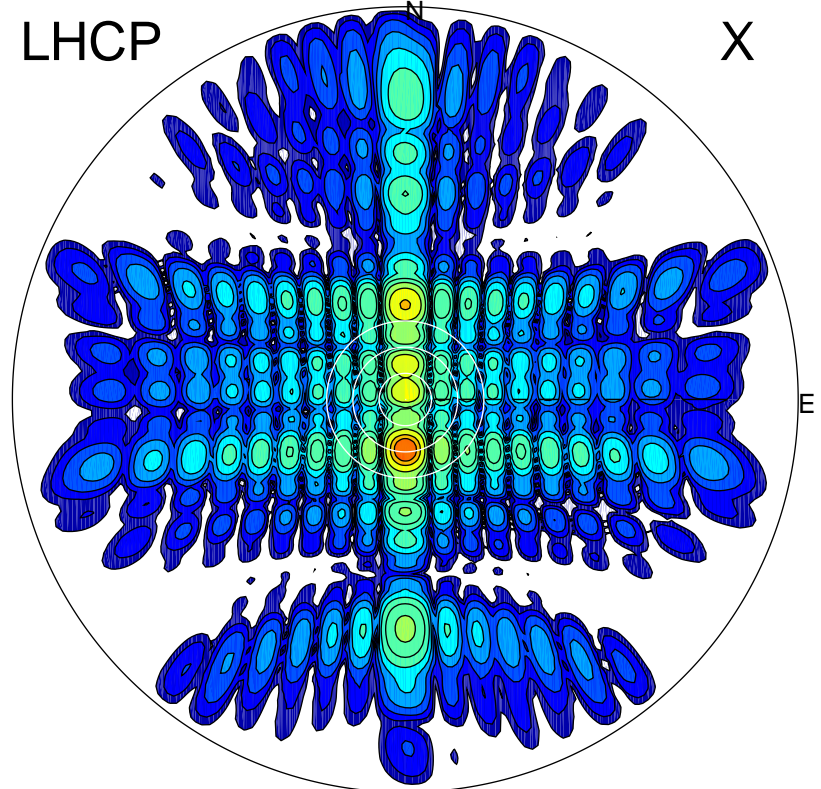


2012-10-20 13:47:27 A1 7.95300000 MHz 261.0 kW

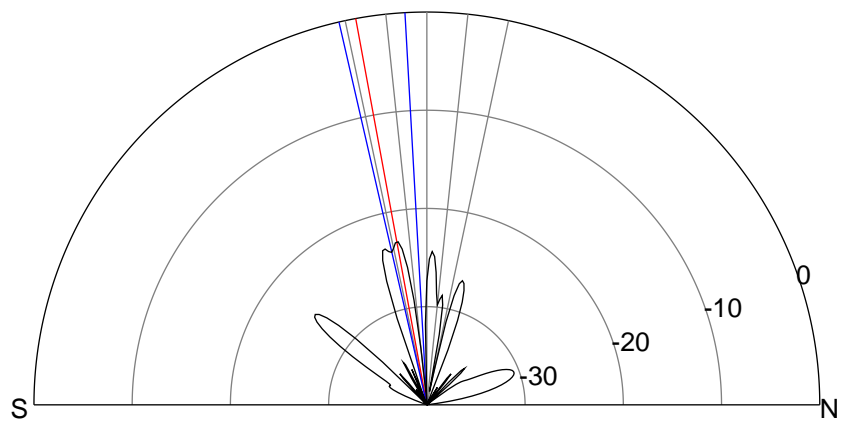
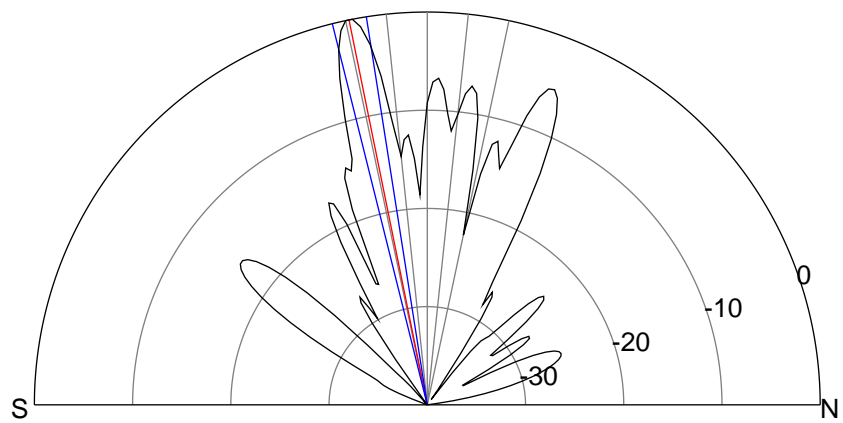
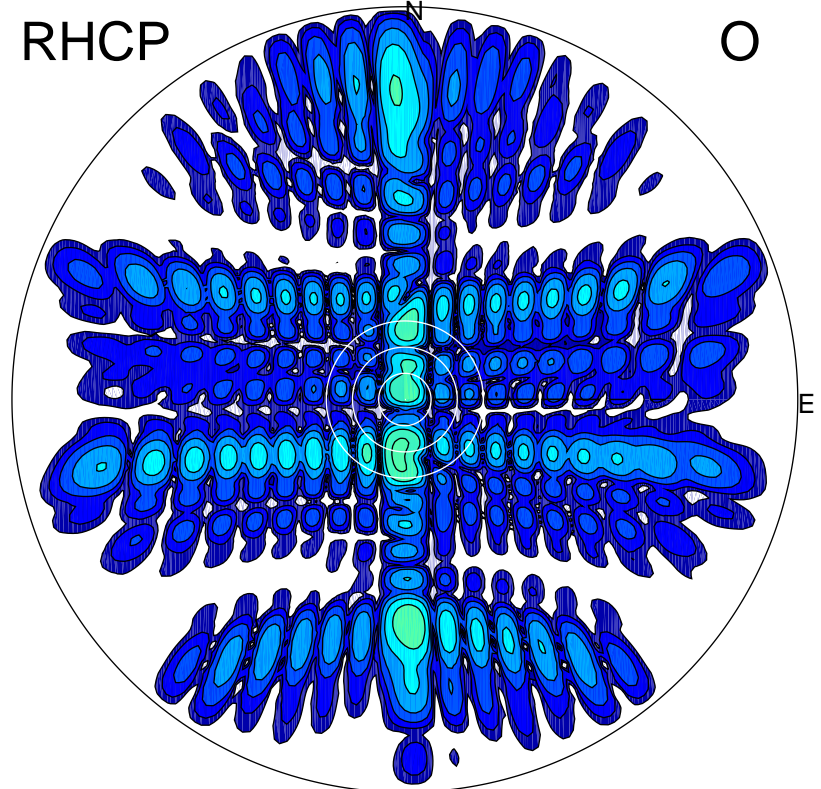
LHCP

X



RHCP

O



ERP 198.0 MW

Peak gain 28.8 dBi at Az 180 Zen 11
RHCP gain 5.6 dBi
N-S peak 28.9 dBi at Zen -11.5
N-S -3 dB beamwidth 5.1 deg.

ERP 1.1 MW

Peak gain 6.2 dBi at Az 186 Zen 11
LHCP gain 28.2 dBi
N-S peak 5.7 dBi at Zen -10.4
N-S -3 dB beamwidth 9.7 deg.