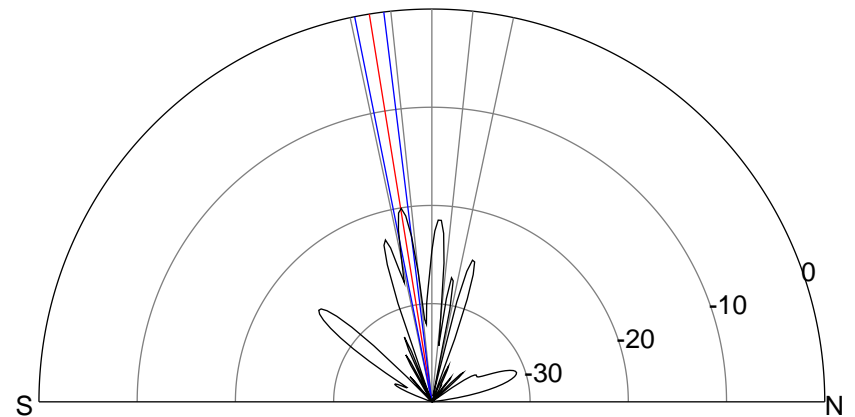
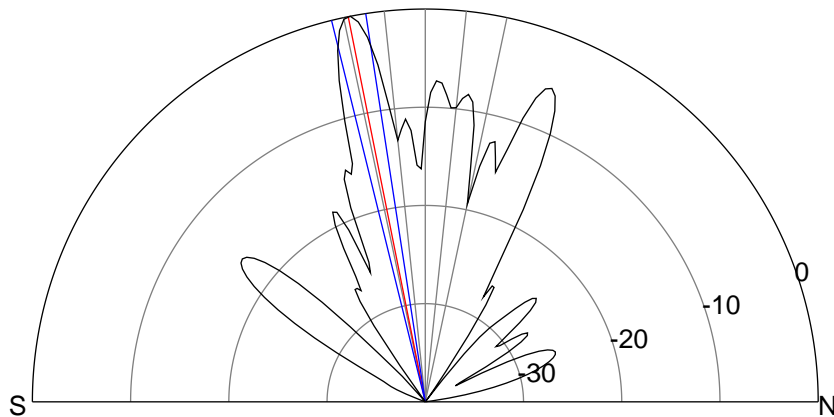
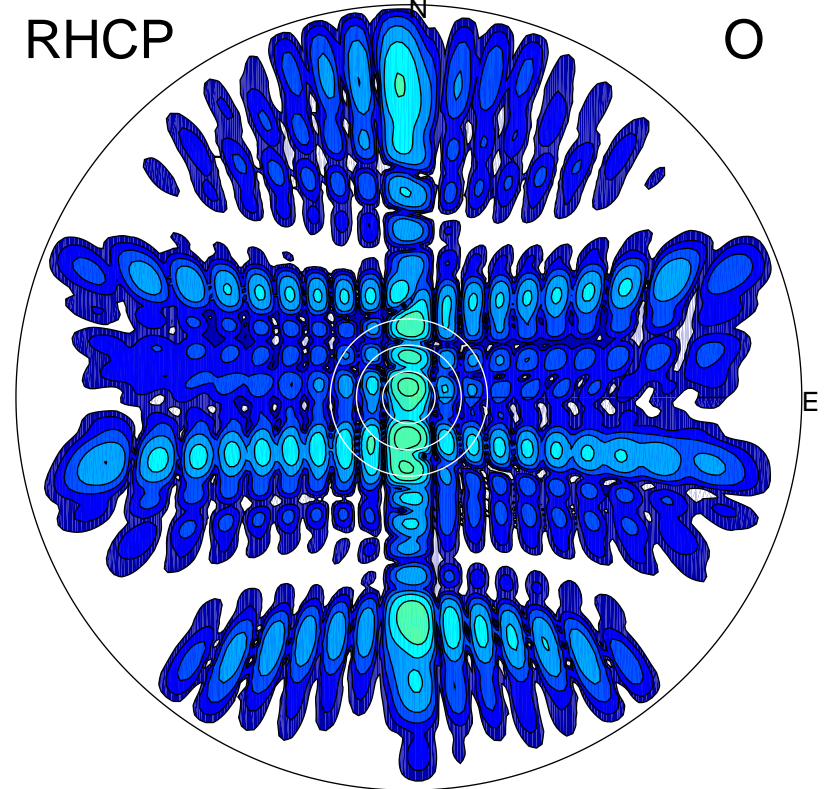
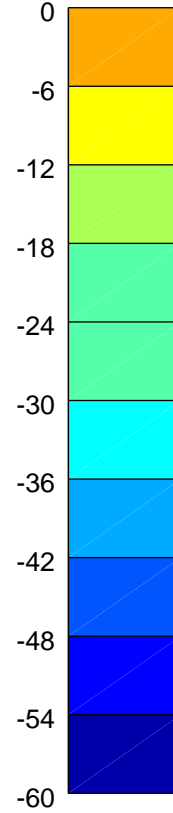
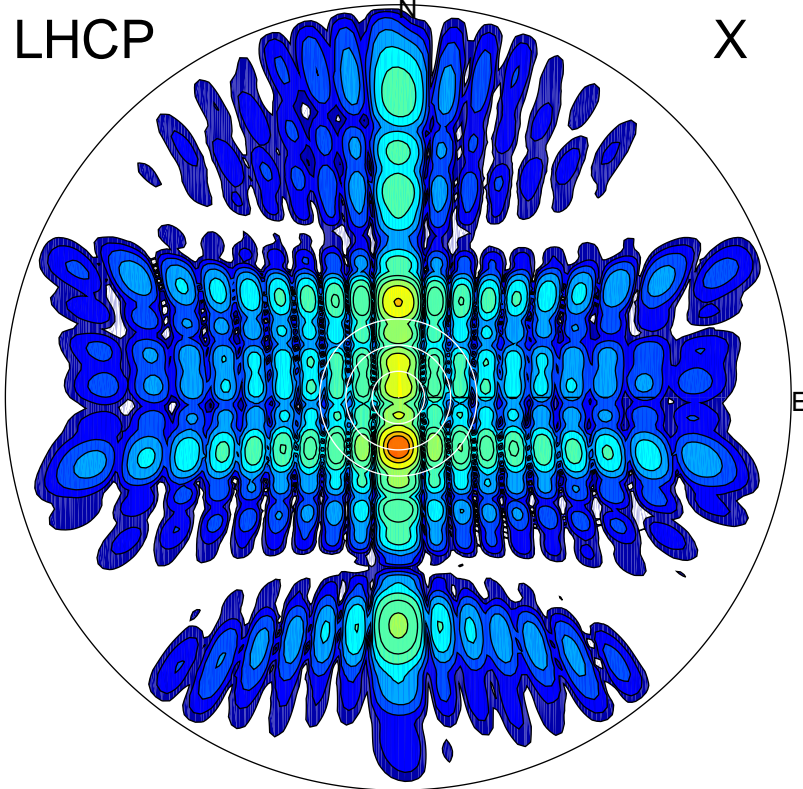


2012-10-20 13:46:27 A1 7.95300000 MHz 81.0 kW



ERP 62.7 MW

Peak gain 28.9 dBi at Az 180 Zen 11
RHCP gain 6.7 dBi
N-S peak 28.9 dBi at Zen -11.3
N-S -3 dB beamwidth 5.1 deg.

ERP 0.6 MW

Peak gain 8.9 dBi at Az 182 Zen 9
LHCP gain 26.4 dBi
N-S peak 8.8 dBi at Zen -9.2
N-S -3 dB beamwidth 4.3 deg.