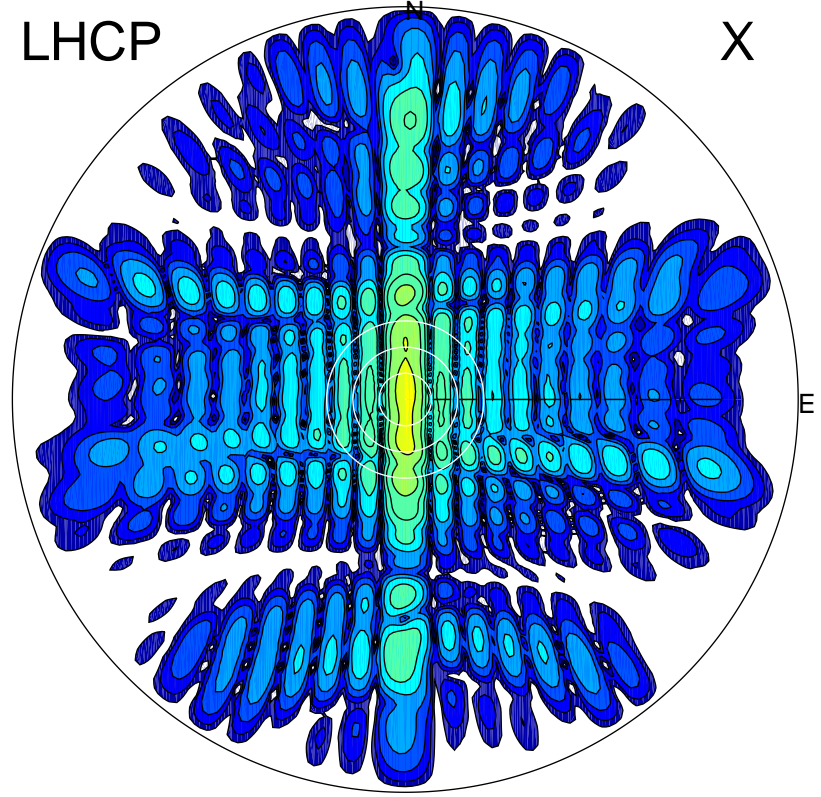


2012-10-20 13:36:27 A1 7.95300000 MHz 778.0 kW

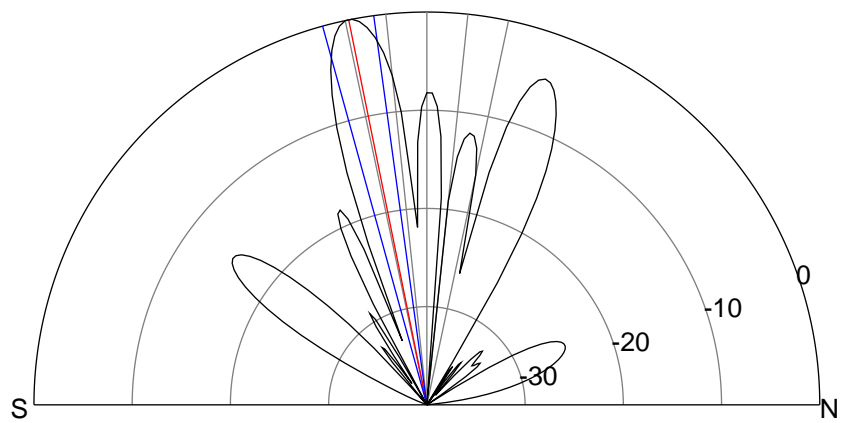
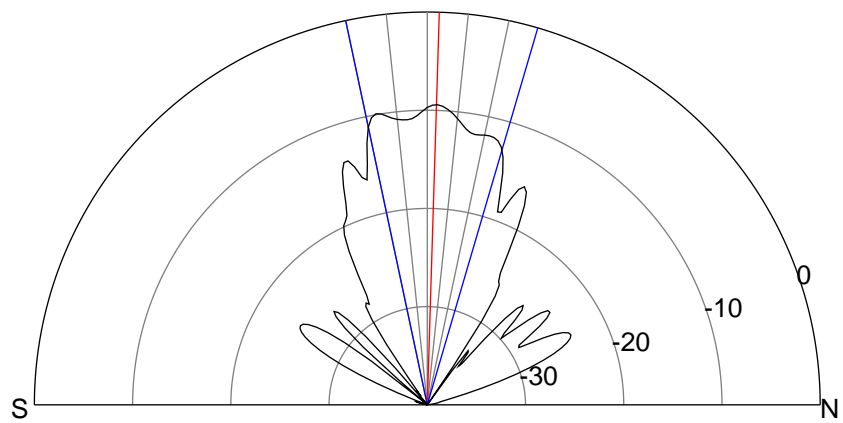
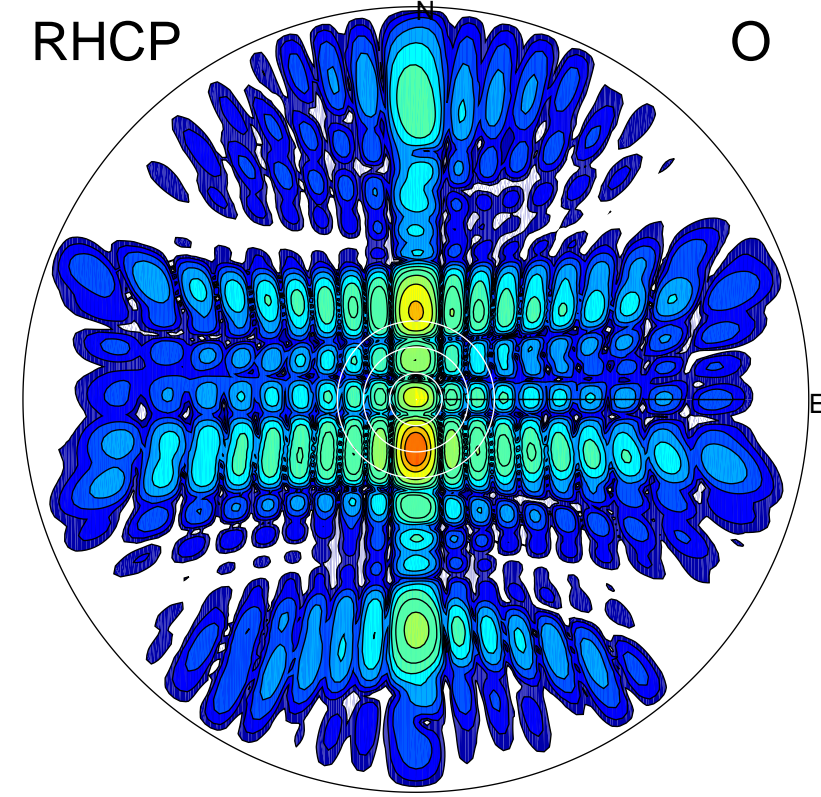
LHCP

X



RHCP

O



### ERP 43.2 MW

Peak gain 17.4 dBi at Az 2 Zen 2  
RHCP gain 17.3 dBi  
N-S peak 17.4 dBi at Zen 1.8  
N-S -3 dB beamwidth 28.3 deg.

### ERP 378.8 MW

Peak gain 26.9 dBi at Az 180 Zen 11  
LHCP gain 16.7 dBi  
N-S peak 26.9 dBi at Zen -11.5  
N-S -3 dB beamwidth 7.6 deg.