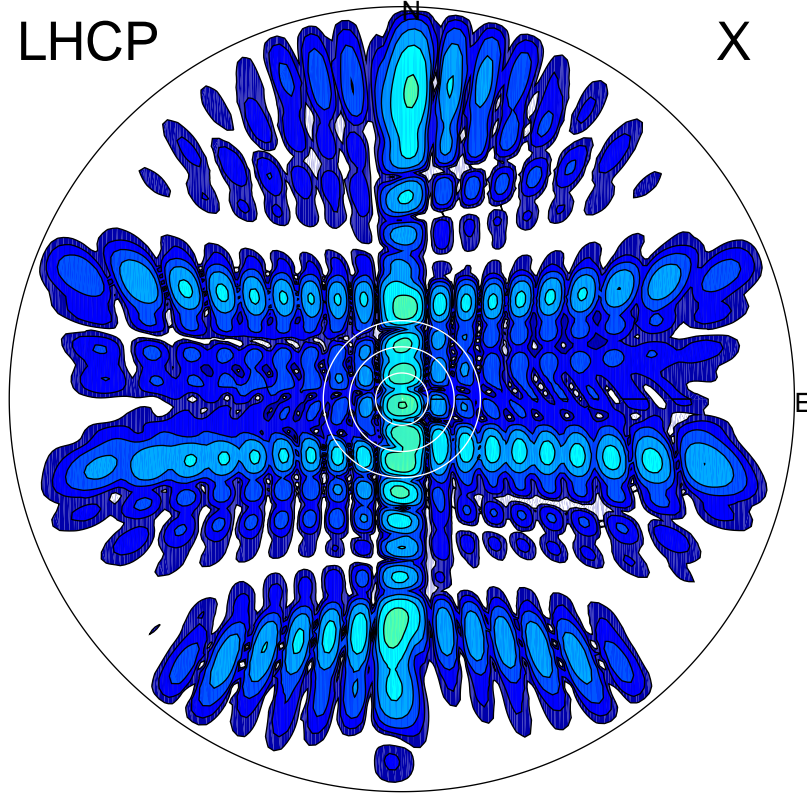


2012-10-20 13:32:27 A1 7.95300000 MHz 75.0 kW

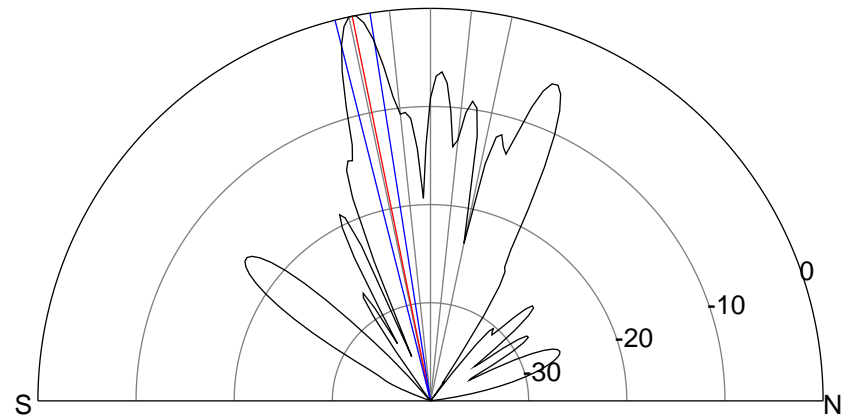
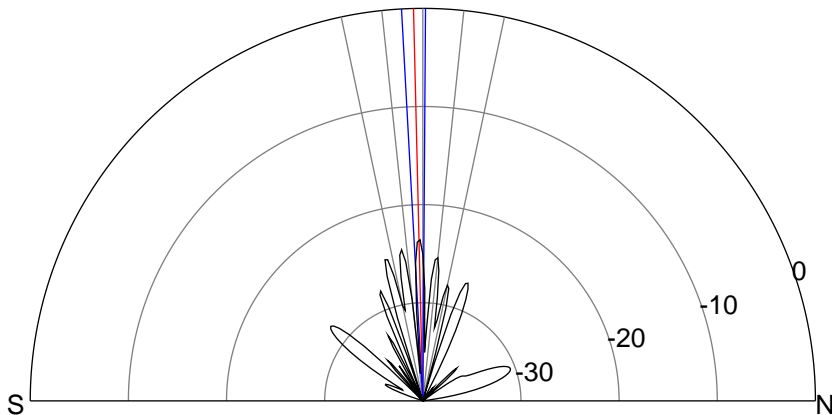
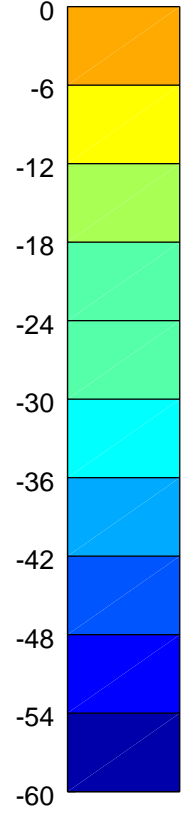
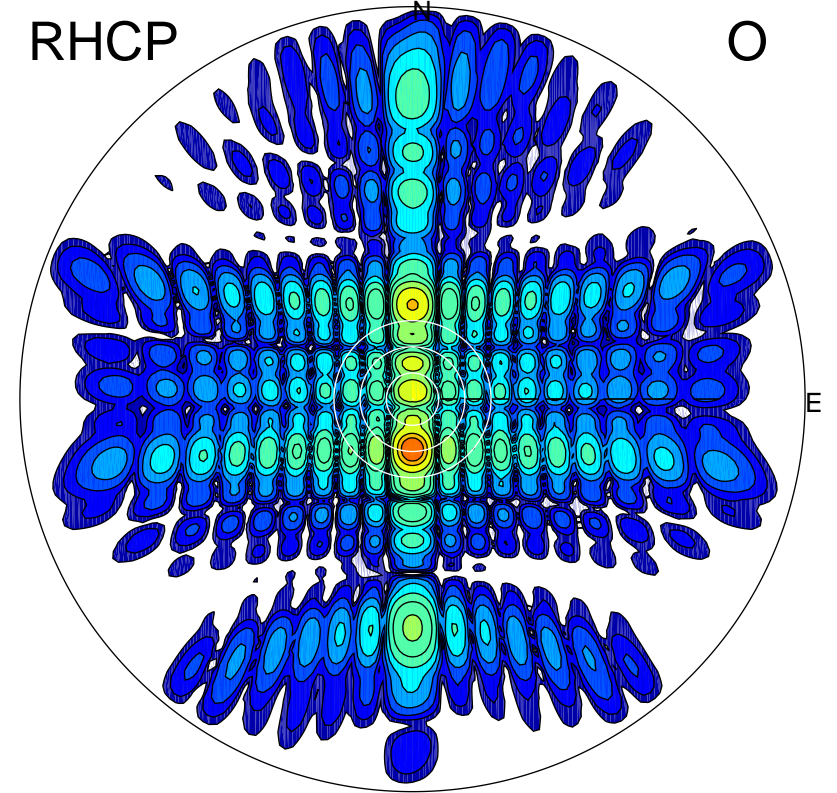
LHCP

X



RHCP

O



ERP 0.2 MW

Peak gain 5.2 dBi at Az 178 Zen 1
RHCP gain 14.9 dBi
N-S peak 5.3 dBi at Zen -1.4
N-S -3 dB beamwidth 3.5 deg.

ERP 56.3 MW

Peak gain 28.8 dBi at Az 180 Zen 11
LHCP gain -1.8 dBi
N-S peak 28.9 dBi at Zen -11.5
N-S -3 dB beamwidth 5.2 deg.