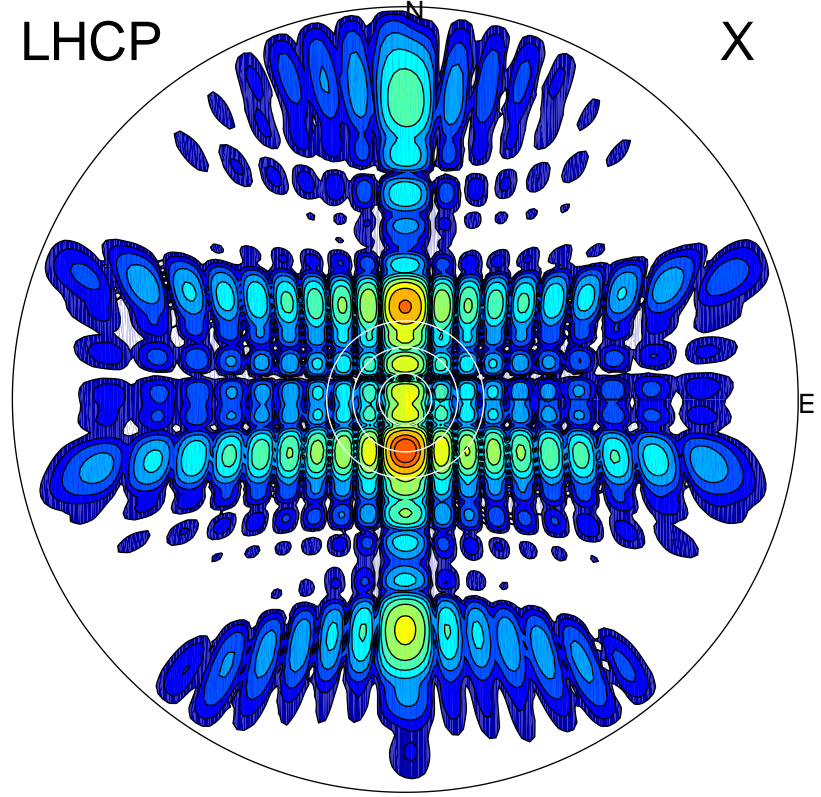


2012-10-18 14:51:00 A1 7.95300000 MHz 704.0 kW

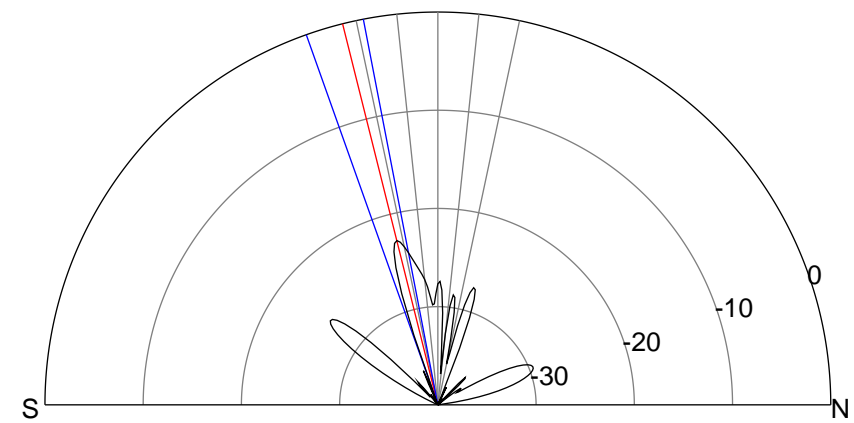
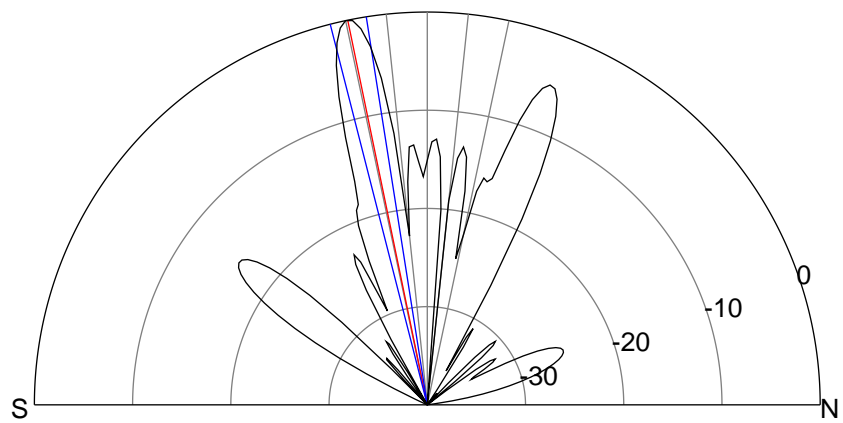
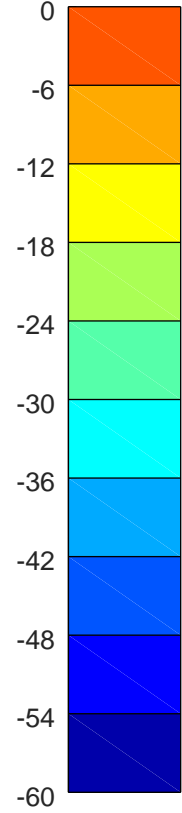
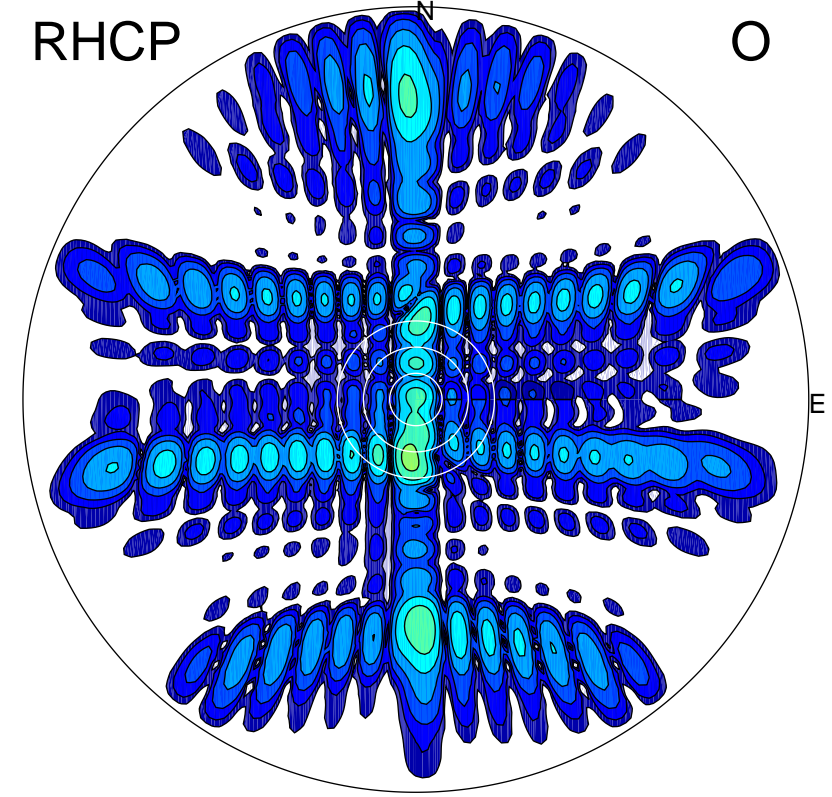
LHCP

X



RHCP

O



ERP 603.3 MW

Peak gain 29.3 dBi at Az 180 Zen 12
RHCP gain 5.8 dBi
N-S peak 29.4 dBi at Zen -11.7
N-S -3 dB beamwidth 5.4 deg.

ERP 4.0 MW

Peak gain 7.5 dBi at Az 186 Zen 14
LHCP gain 26.5 dBi
N-S peak 6.6 dBi at Zen -14.0
N-S -3 dB beamwidth 8.6 deg.