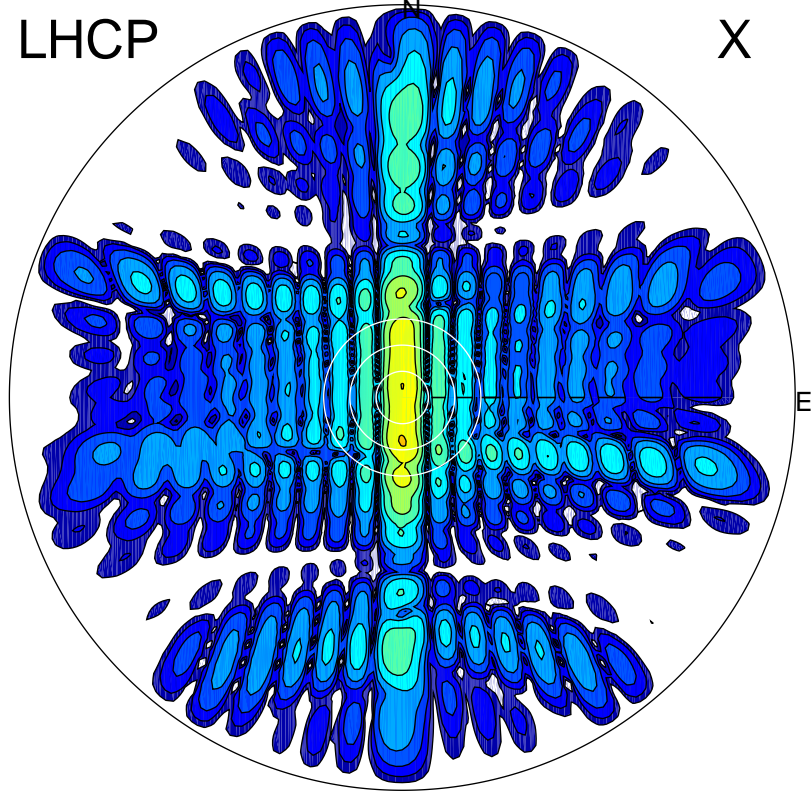


2012-10-18 14:32:05 A1 7.95300000 MHz 937.0 kW

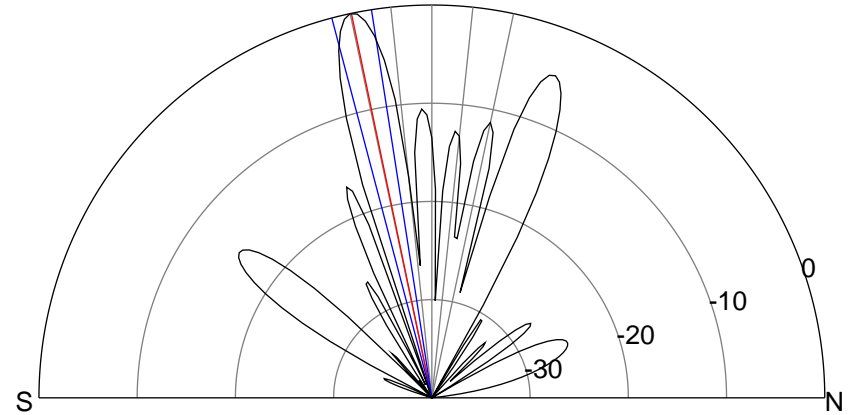
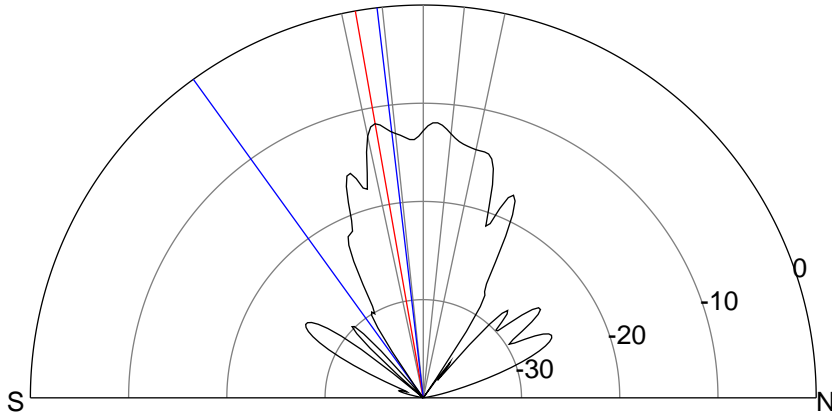
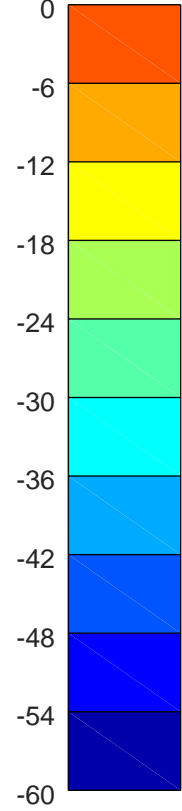
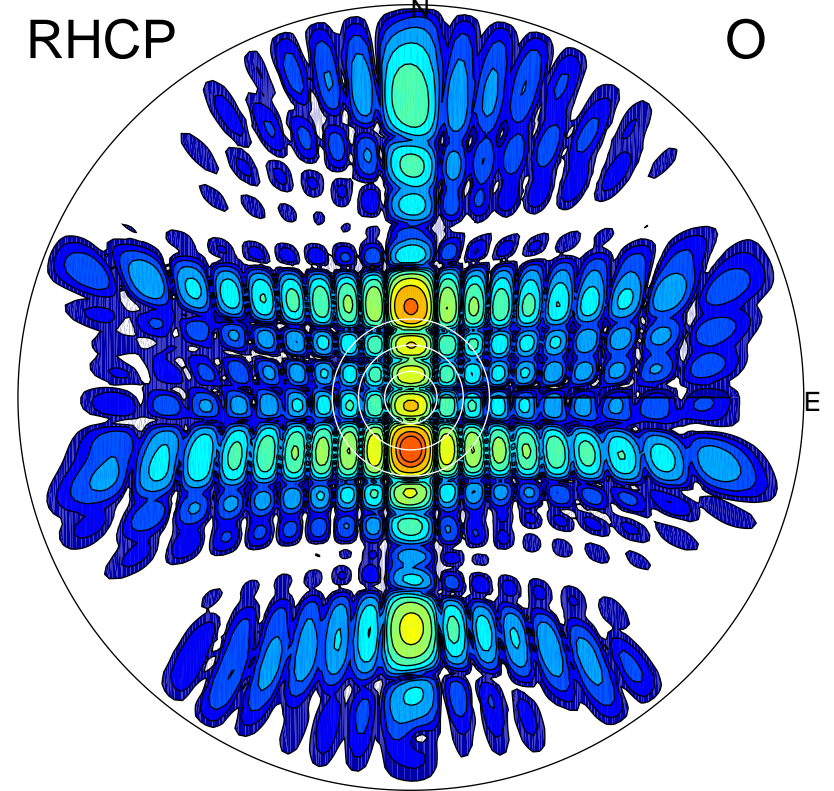
LHCP

X



RHCP

O



ERP 41.5 MW

Peak gain 16.5 dBi at Az 180 Zen 10
RHCP gain 27.1 dBi
N-S peak 16.5 dBi at Zen -10.0
N-S -3 dB beamwidth 29.1 deg.

ERP 608.4 MW

Peak gain 28.1 dBi at Az 180 Zen 12
LHCP gain 15.4 dBi
N-S peak 28.1 dBi at Zen -11.8
N-S -3 dB beamwidth 5.9 deg.