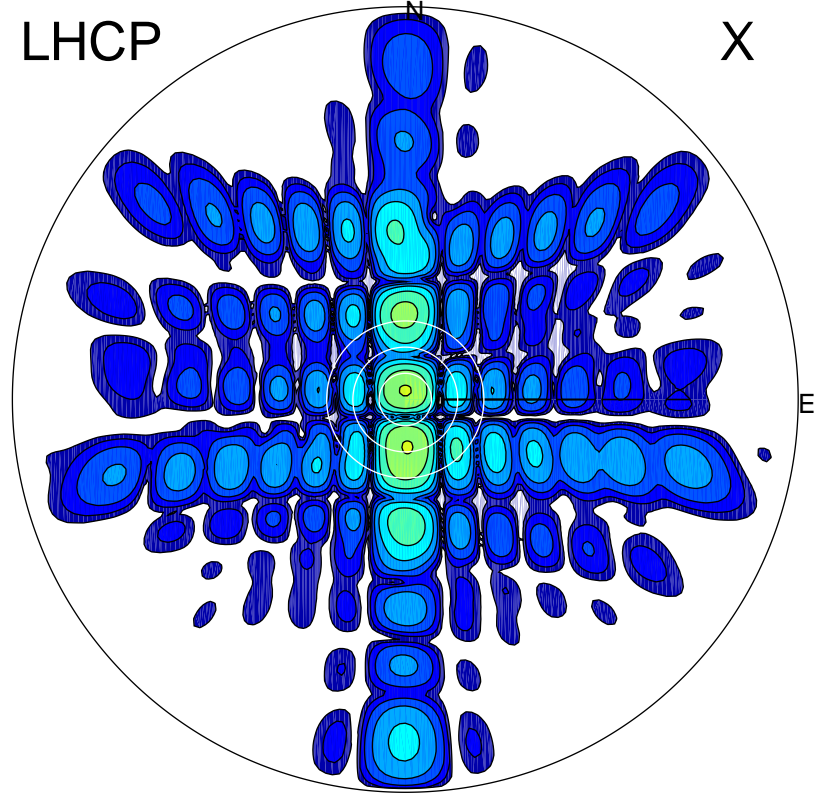


2012-02-23 15:47:05 A1 5.58125000 MHz 824.0 kW

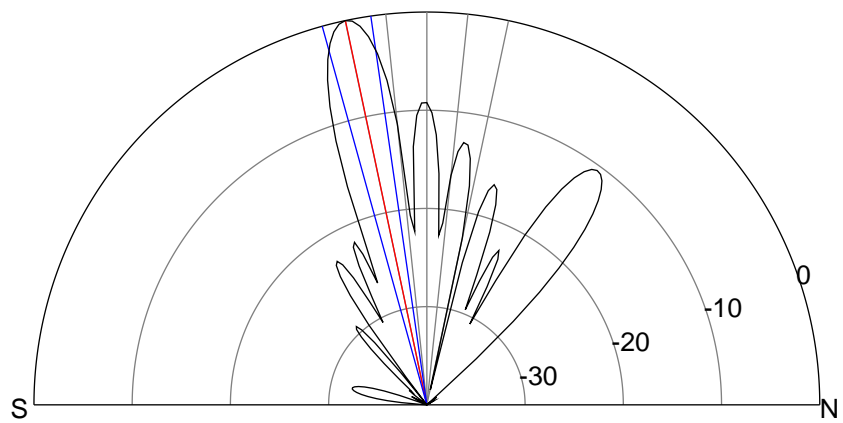
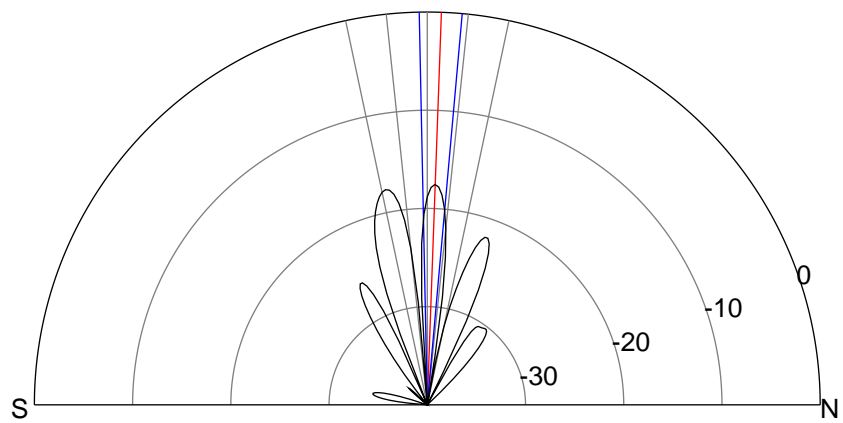
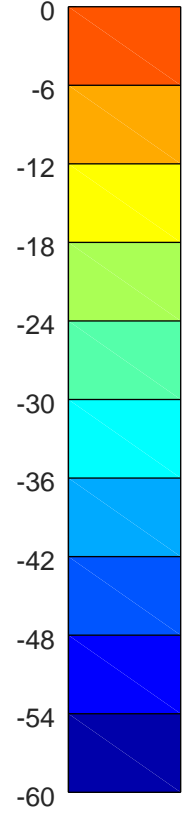
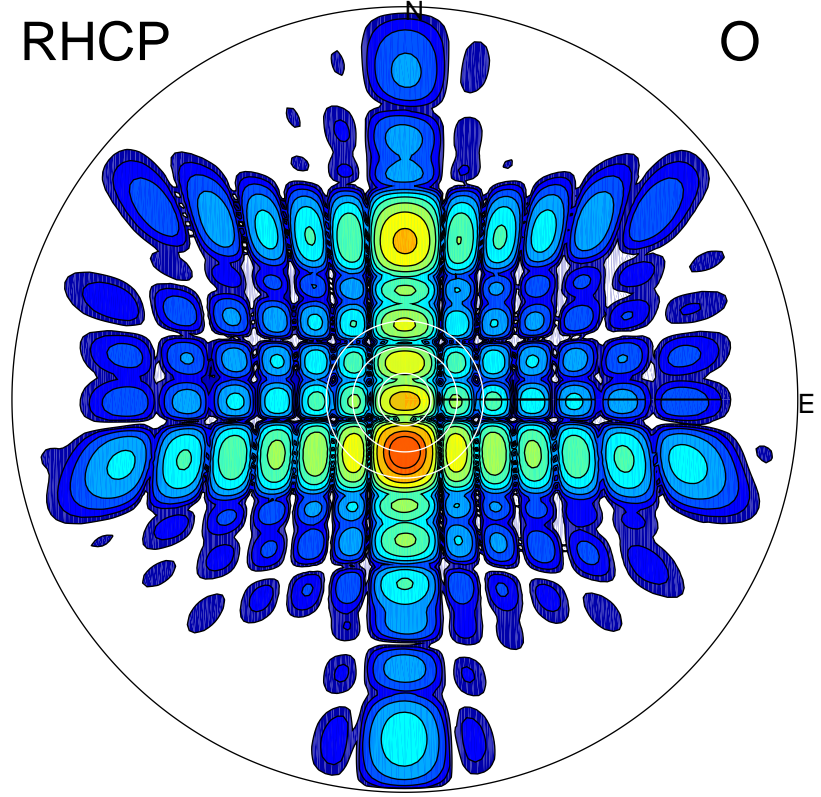
LHCP

X



RHCP

O



ERP 7.9 MW

Peak gain 9.8 dBi at Az 357 Zen 2
RHCP gain 14.9 dBi
N-S peak 9.8 dBi at Zen 2.1
N-S -3 dB beamwidth 6.3 deg.

ERP 448.4 MW

Peak gain 27.4 dBi at Az 180 Zen 12
LHCP gain 9.5 dBi
N-S peak 27.4 dBi at Zen -12.0
N-S -3 dB beamwidth 7.2 deg.