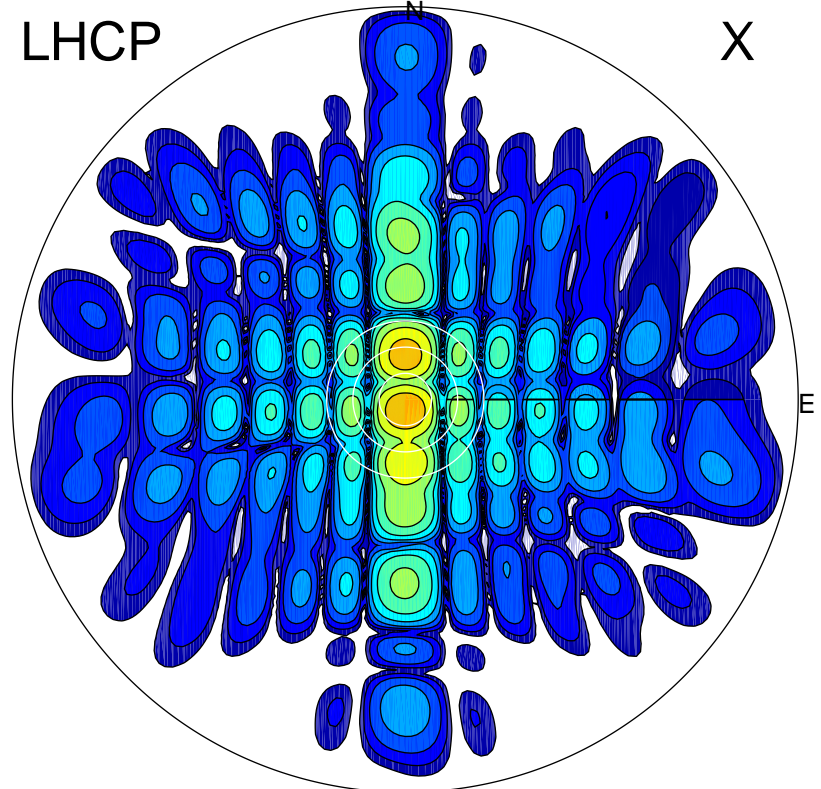


2012-02-23 15:31:05 A1 5.30000000 MHz 884.0 kW

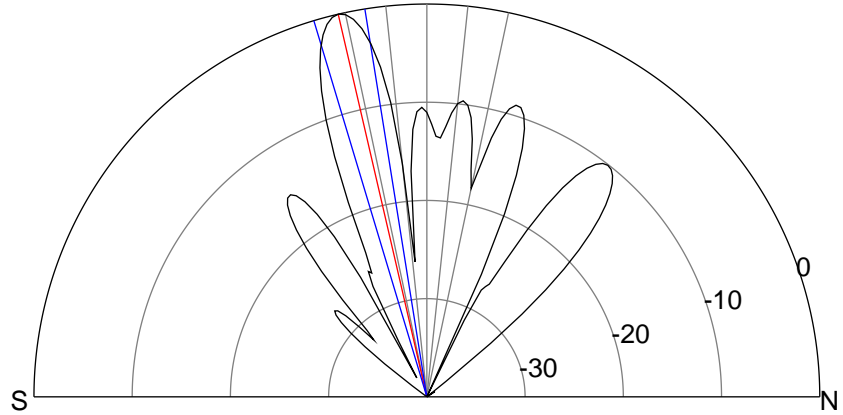
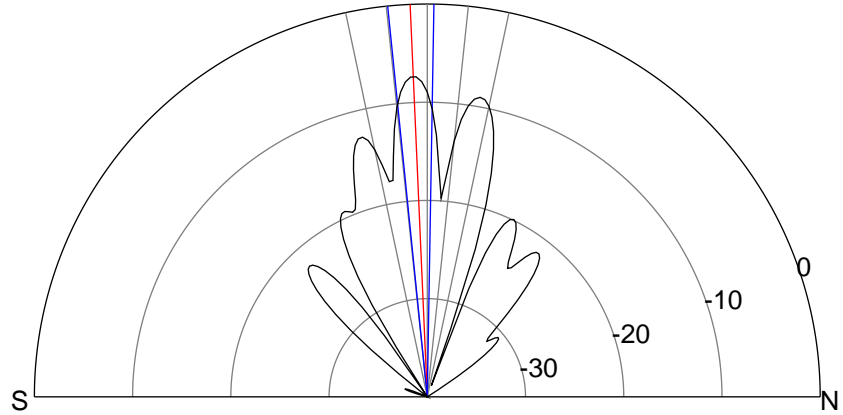
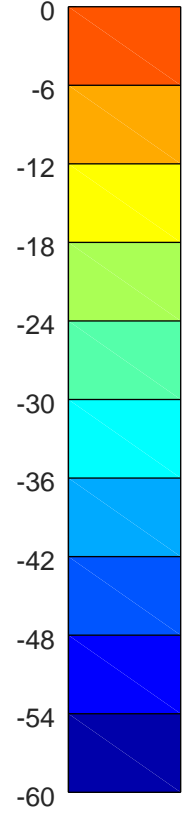
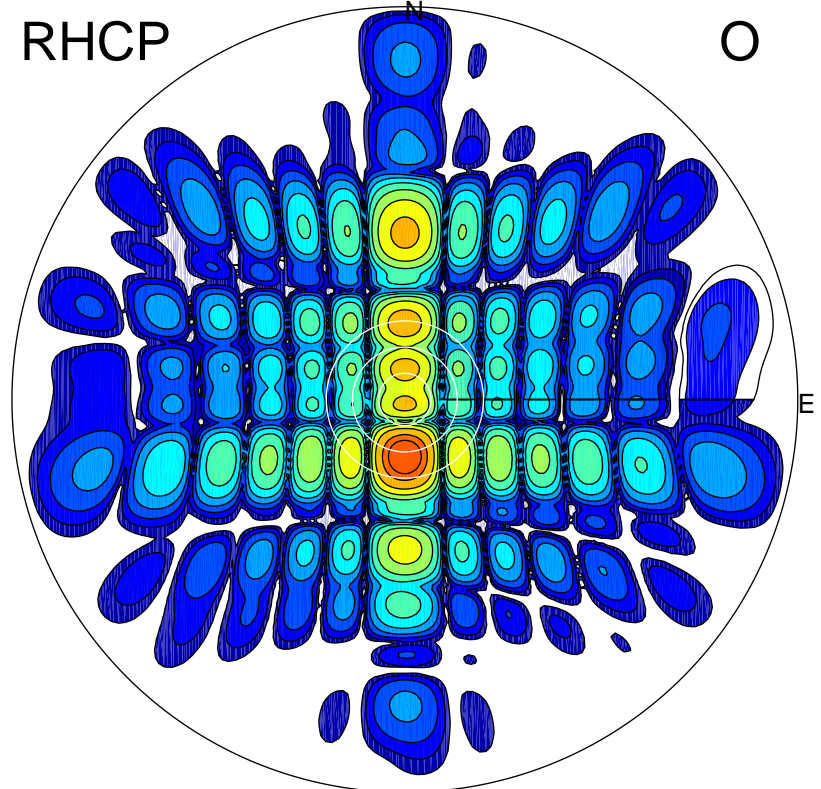
LHCP

X



RHCP

O



ERP 57.9 MW

Peak gain 18.2 dBi at Az 180 Zen 3
RHCP gain 12.8 dBi
N-S peak 18.2 dBi at Zen -2.5
N-S -3 dB beamwidth 6.8 deg.

ERP 317.7 MW

Peak gain 25.6 dBi at Az 180 Zen 13
LHCP gain 12.3 dBi
N-S peak 25.6 dBi at Zen -13.0
N-S -3 dB beamwidth 7.6 deg.