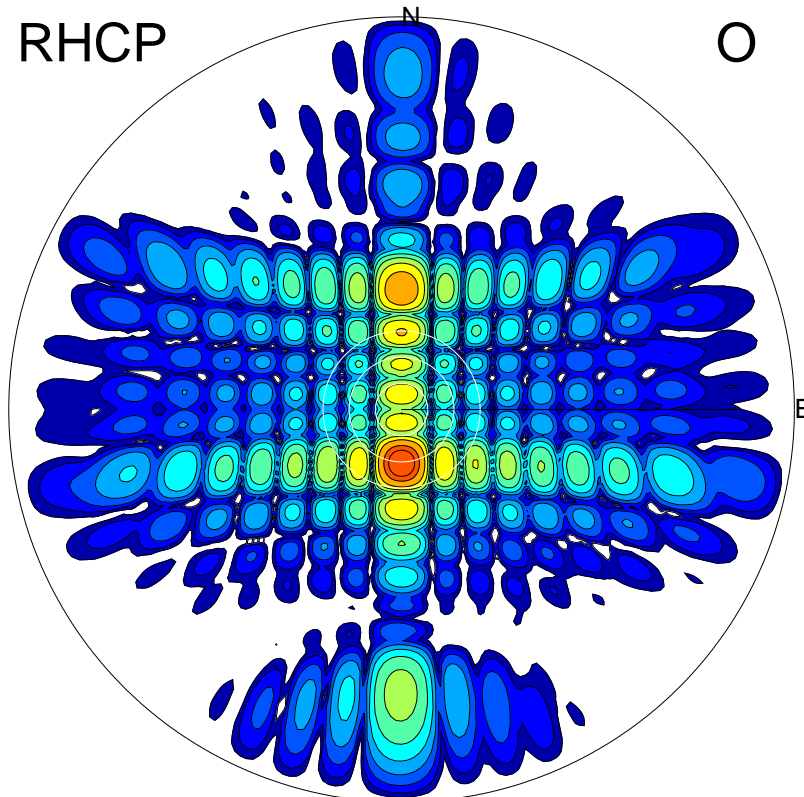
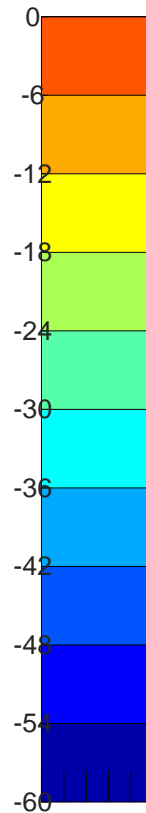
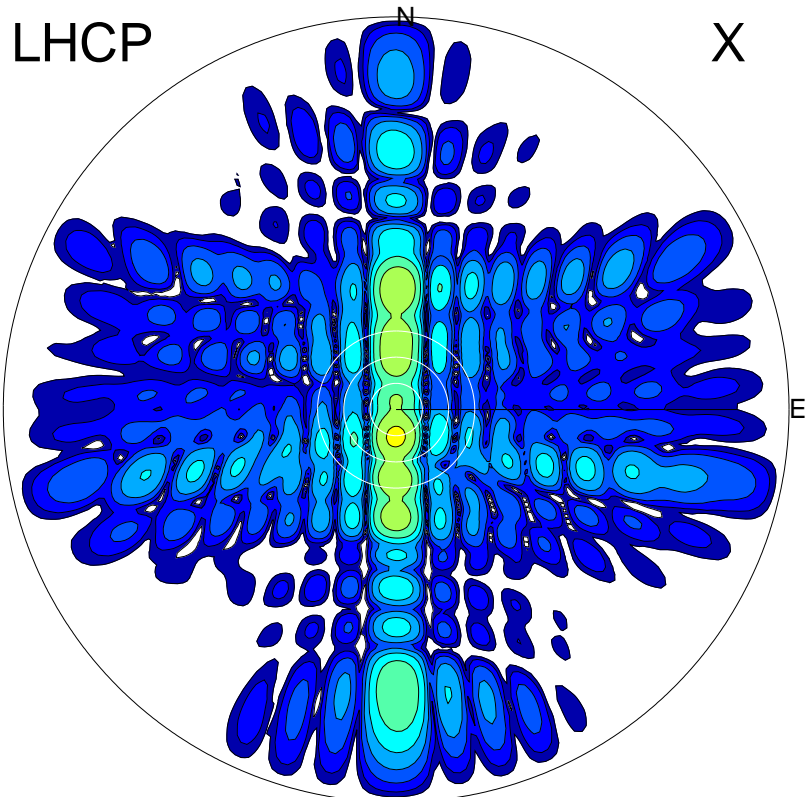
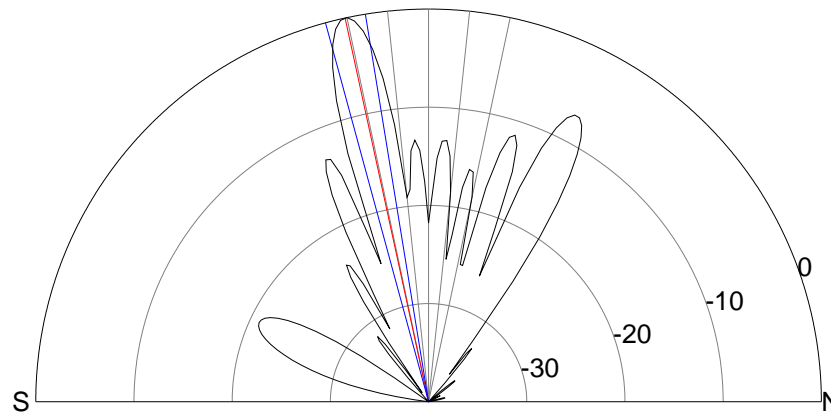
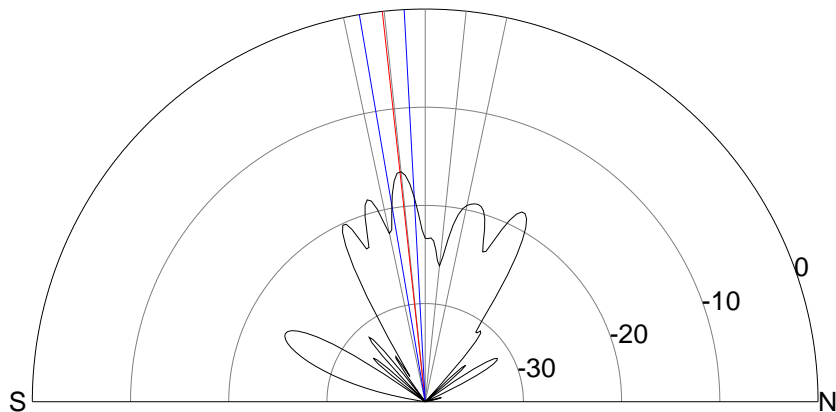


2011-11-16 12:51:05 A1 6.70000000 MHz 897.0 kW



00.0.0.6.81



### ERP 13.8 MW

Peak gain 11.9 dBi at Az 181 Zen 6

RHCP gain 9.2 dBi

N-S peak 11.9 dBi at Zen -6.3

N-S -3 dB beamwidth 6.6 deg.

### ERP 608.2 MW

Peak gain 28.3 dBi at Az 180 Zen 12

LHCP gain 5.8 dBi

N-S peak 28.3 dBi at Zen -12.3

N-S -3 dB beamwidth 5.9 deg.