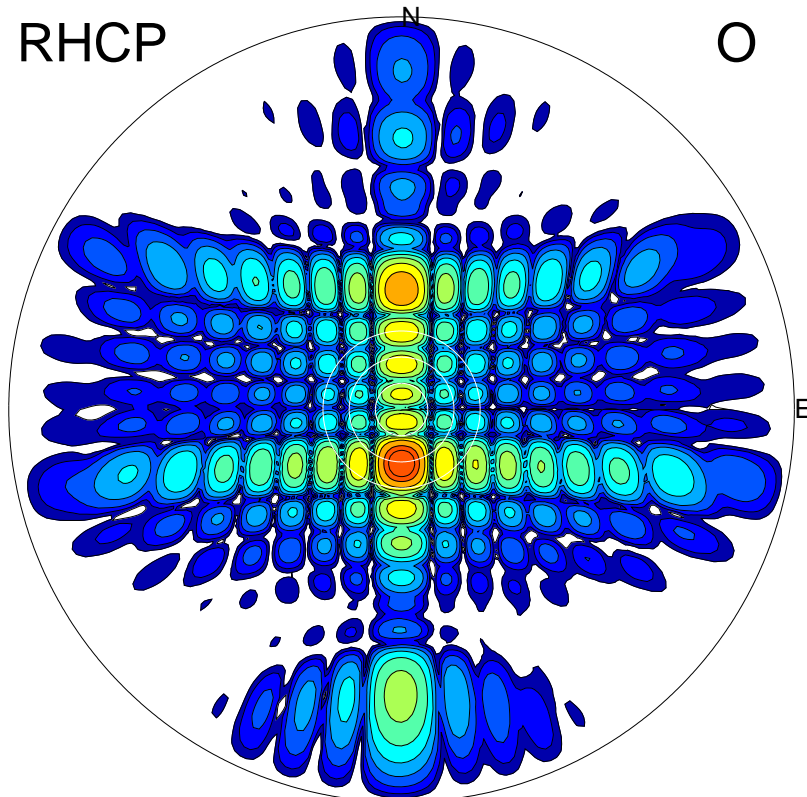
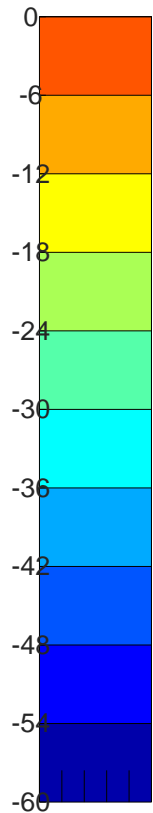
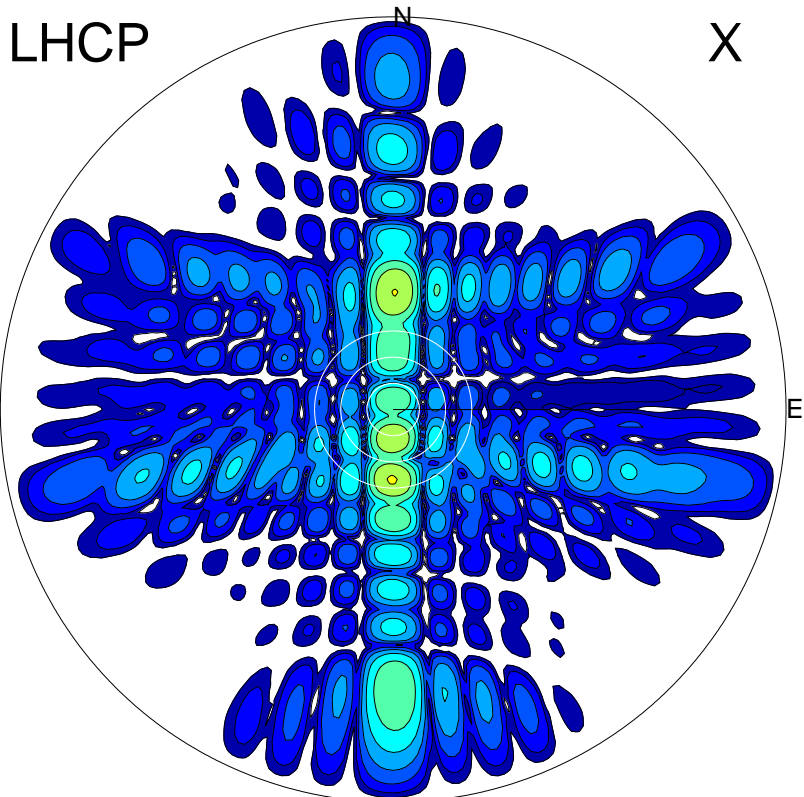
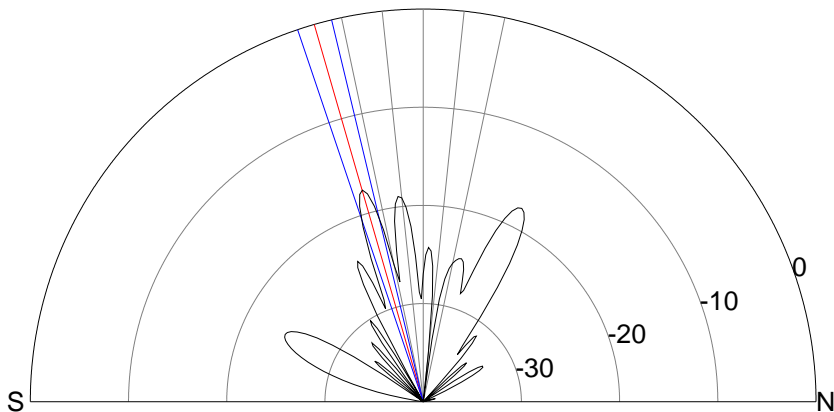


2011-11-16 11:45:25 A1 6.70000000 MHz 948.0 kW

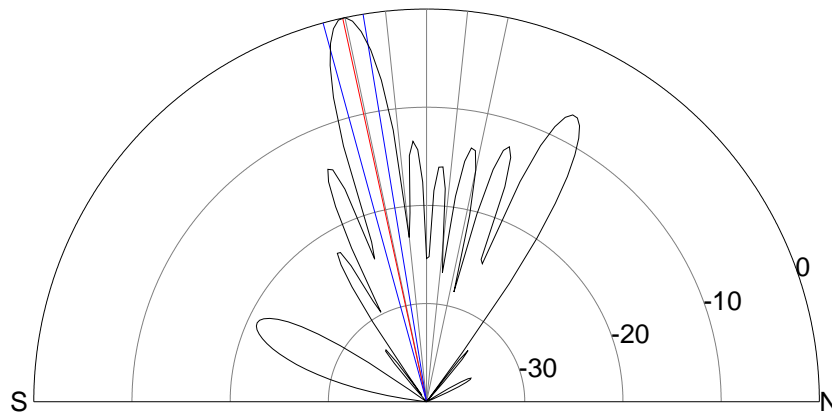


00.0.0.6.81



ERP 11.7 MW

Peak gain 10.9 dBi at Az 181 Zen 16
RHCP gain 24.1 dBi
N-S peak 10.9 dBi at Zen -16.1
N-S -3 dB beamwidth 5.1 deg.



ERP 667.3 MW

Peak gain 28.5 dBi at Az 180 Zen 12
LHCP gain 2.7 dBi
N-S peak 28.5 dBi at Zen -12.3
N-S -3 dB beamwidth 6.0 deg.