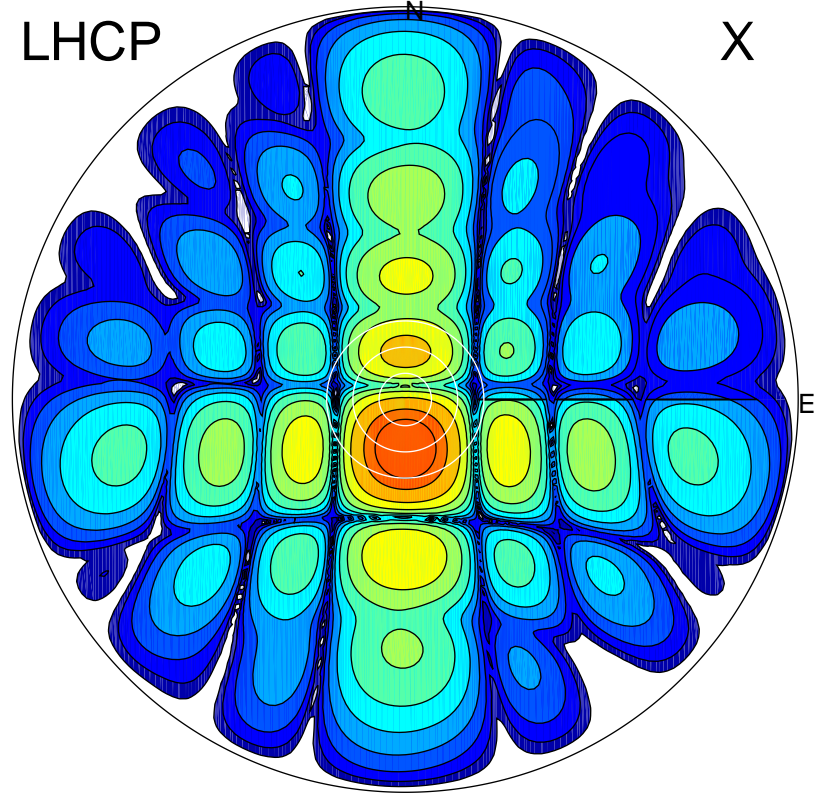


2011-10-09 17:05:02 A2 4.04000000 MHz 805.0 kW

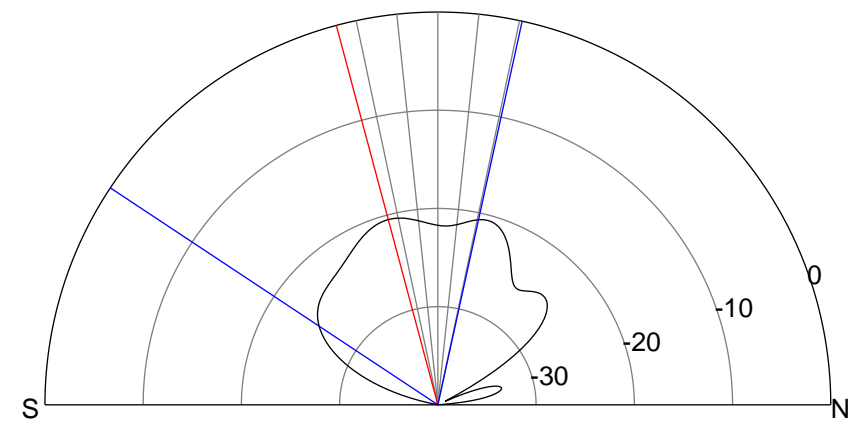
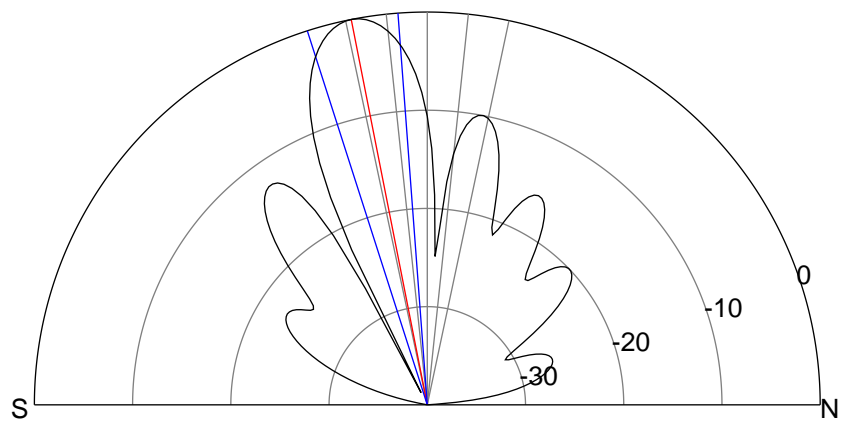
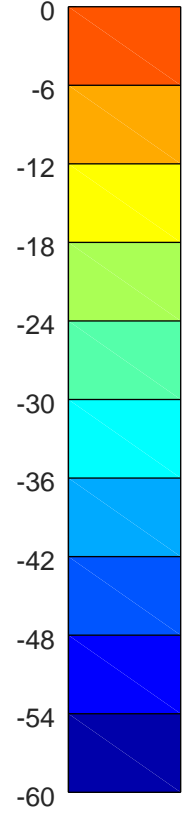
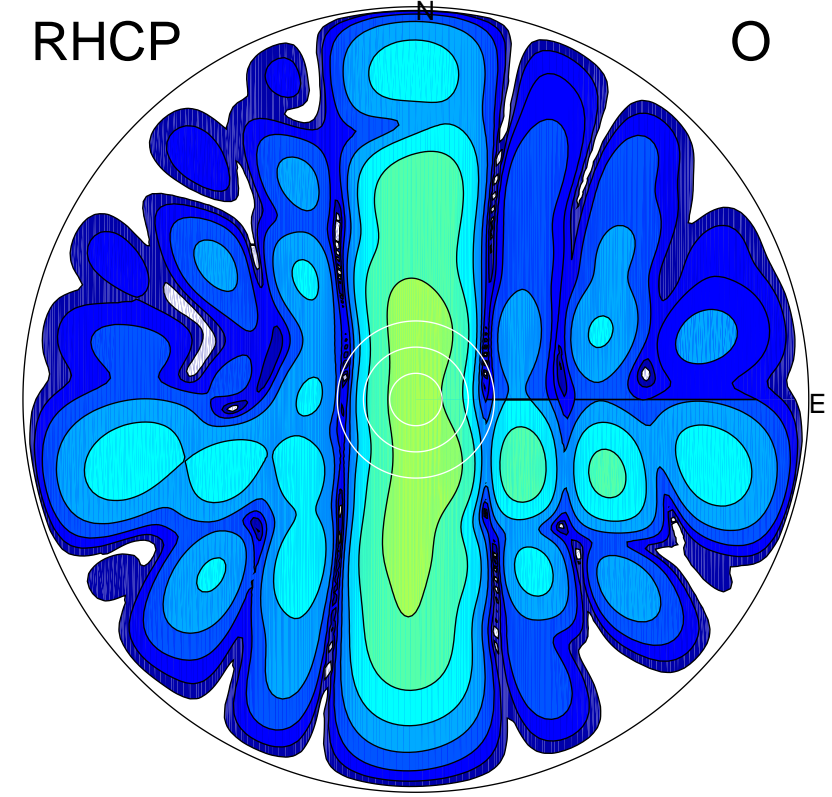
LHCP

X



RHCP

O



ERP 131.9 MW

Peak gain 22.1 dBi at Az 180 Zen 11
RHCP gain 1.5 dBi
N-S peak 22.1 dBi at Zen -11.2
N-S -3 dB beamwidth 13.5 deg.

ERP 1.4 MW

Peak gain 2.4 dBi at Az 166 Zen 15
LHCP gain 20.7 dBi
N-S peak 1.7 dBi at Zen -15.0
N-S -3 dB beamwidth 68.9 deg.