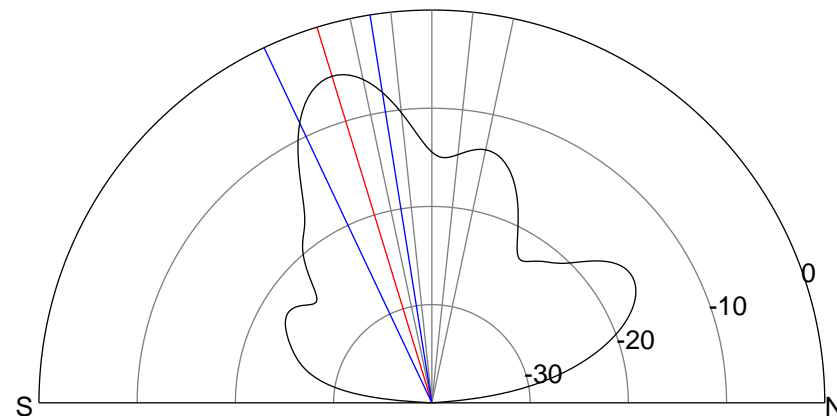
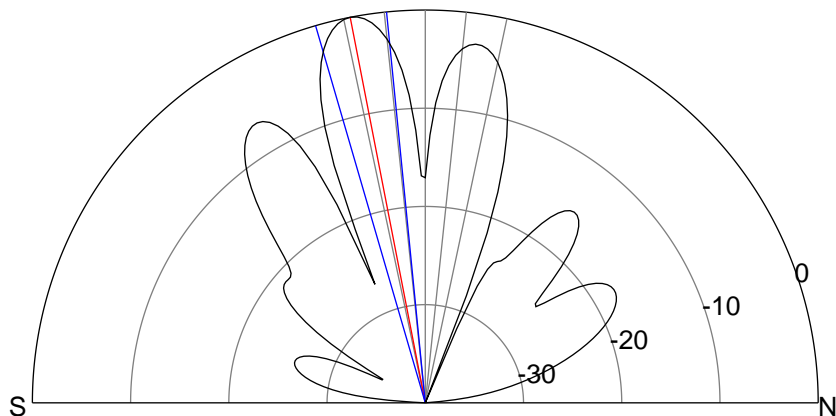
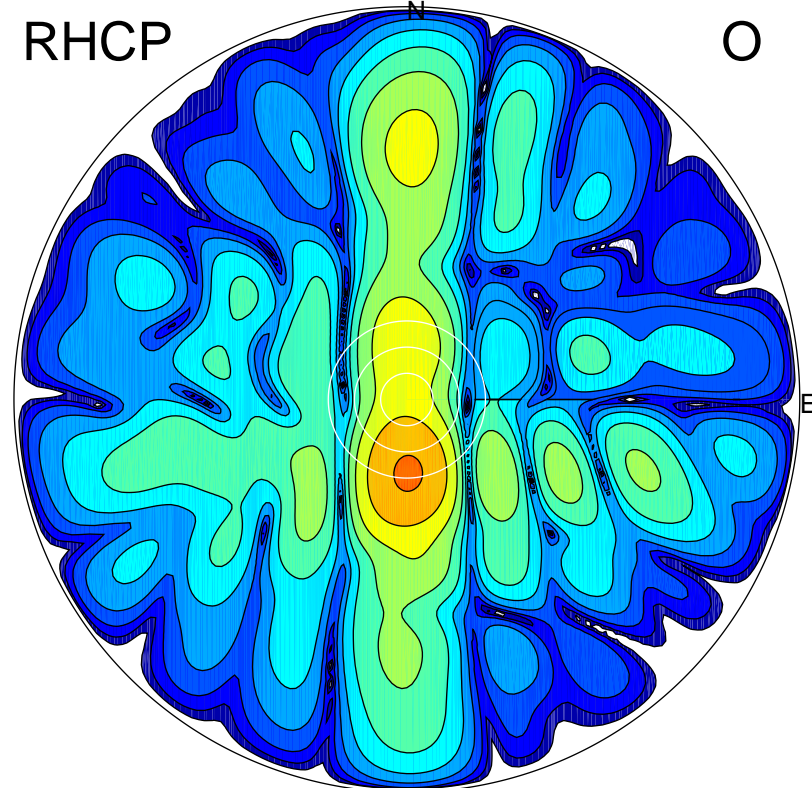
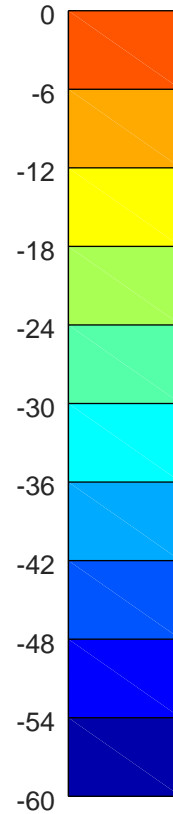
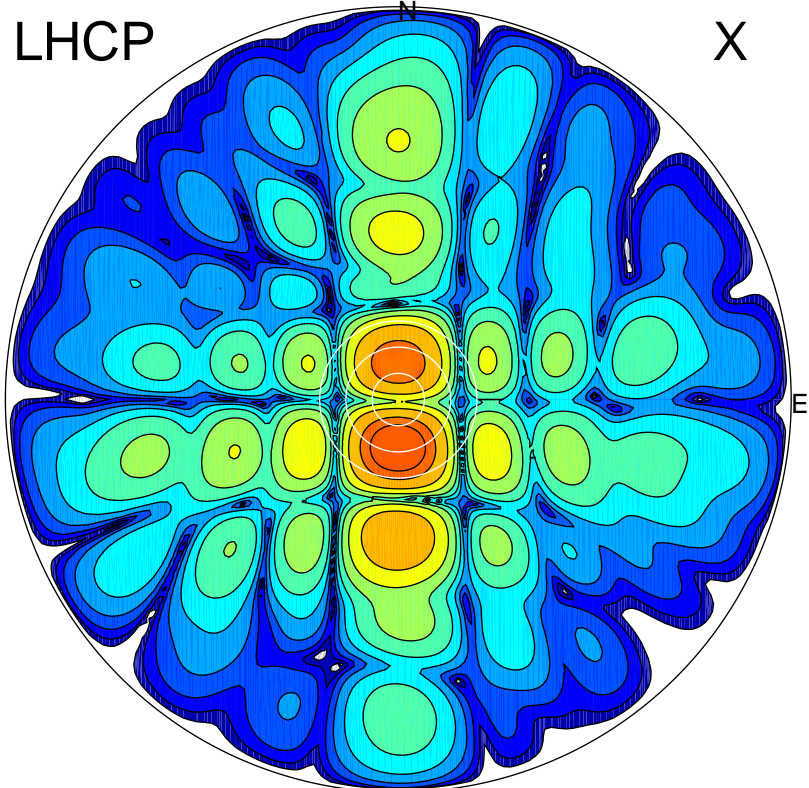


2011-10-09 16:53:57 A2 4.54400000 MHz 826.0 kW



### ERP 94.9 MW

Peak gain 20.6 dBi at Az 180 Zen 11  
RHCP gain 13.8 dBi  
N-S peak 20.6 dBi at Zen -11.0  
N-S -3 dB beamwidth 10.6 deg.

### ERP 28.5 MW

Peak gain 15.4 dBi at Az 179 Zen 17  
LHCP gain 16.8 dBi  
N-S peak 15.4 dBi at Zen -17.0  
N-S -3 dB beamwidth 16.2 deg.