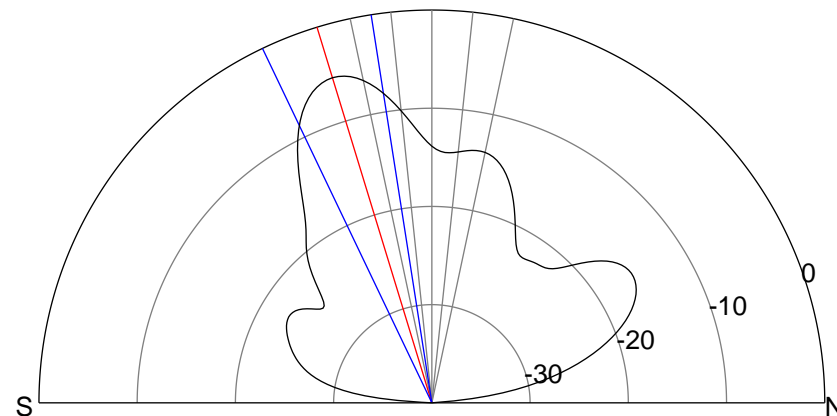
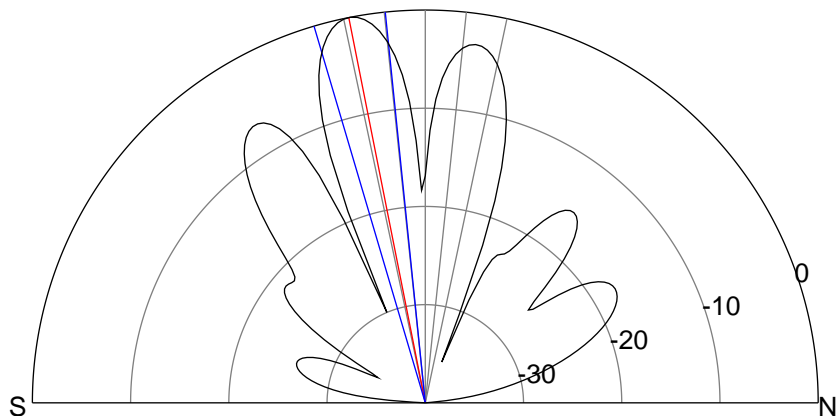
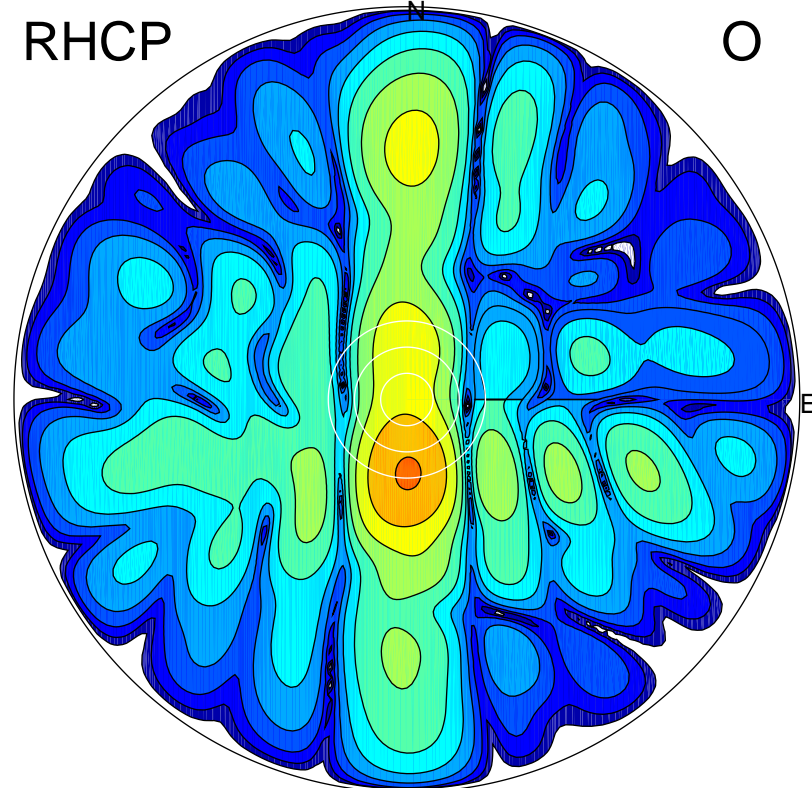
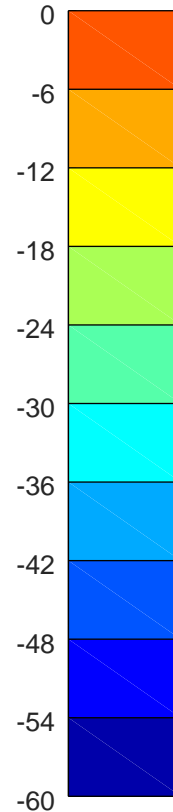
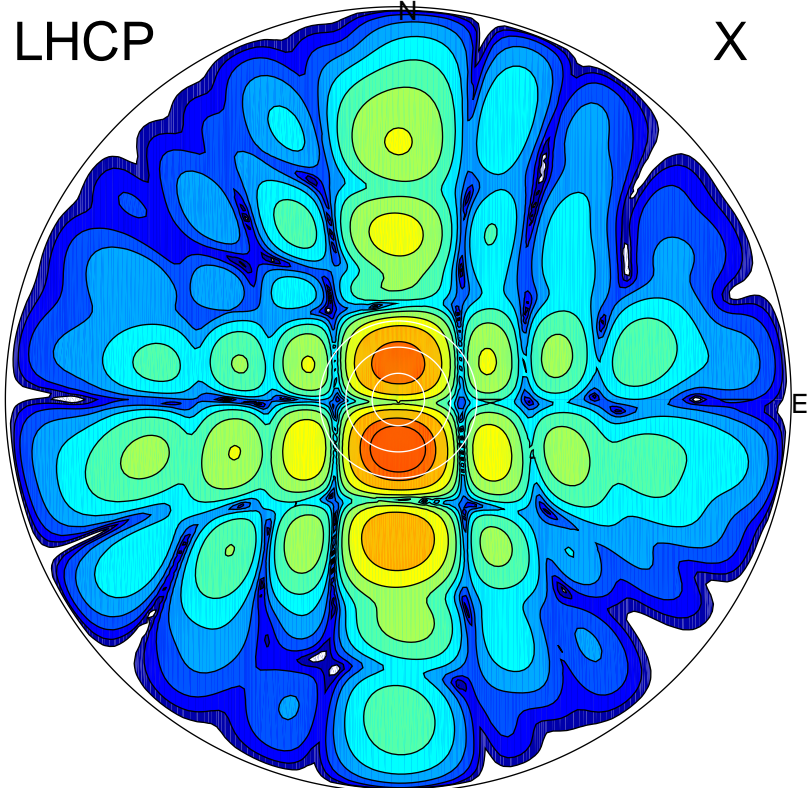


2011-10-09 16:50:02 A2 4.54400000 MHz 845.0 kW



ERP 97.9 MW

Peak gain 20.6 dBi at Az 182 Zen 11
RHCP gain 13.7 dBi
N-S peak 20.6 dBi at Zen -11.2
N-S -3 dB beamwidth 10.6 deg.

ERP 28.4 MW

Peak gain 15.3 dBi at Az 179 Zen 17
LHCP gain 17.2 dBi
N-S peak 15.3 dBi at Zen -17.0
N-S -3 dB beamwidth 16.6 deg.