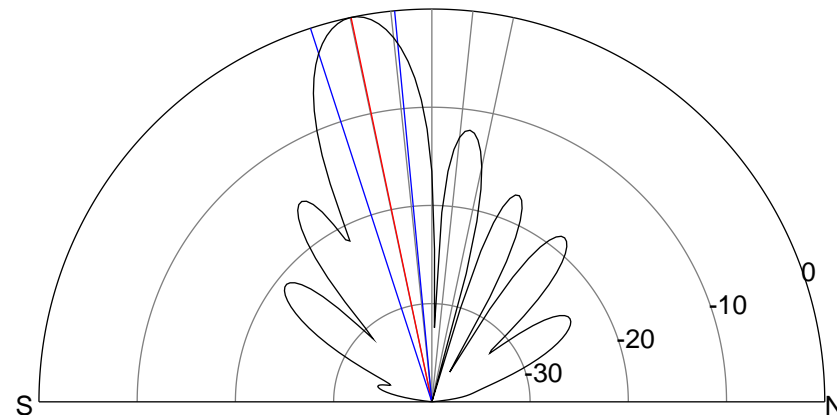
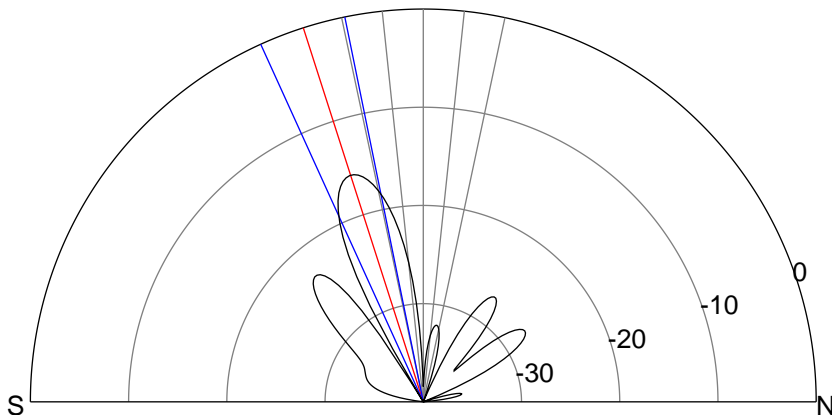
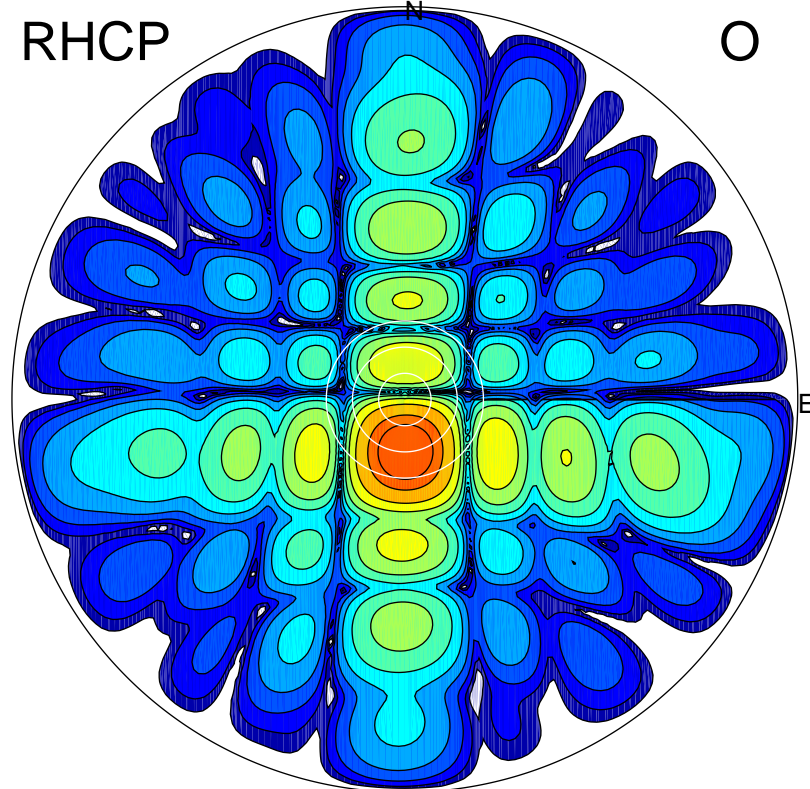
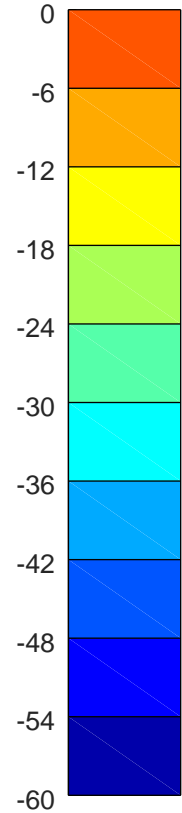
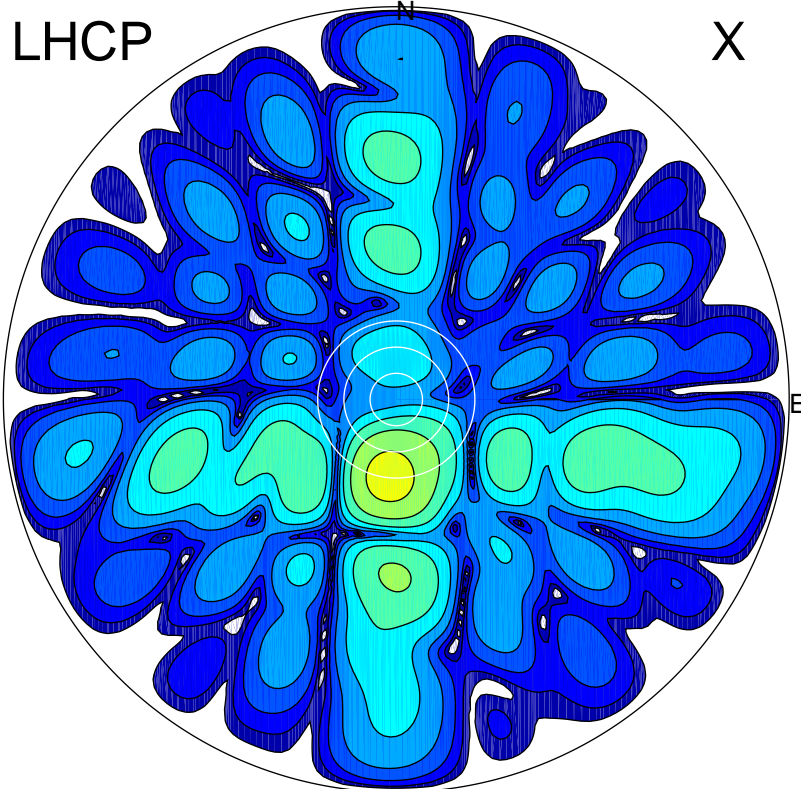


2011-10-09 16:29:57 A2 4.54400000 MHz 837.0 kW



ERP 4.7 MW

Peak gain 7.5 dBi at Az 186 Zen 18
RHCP gain 20.2 dBi
N-S peak 7.3 dBi at Zen -17.8
N-S -3 dB beamwidth 12.9 deg.

ERP 170.3 MW

Peak gain 23.1 dBi at Az 178 Zen 12
LHCP gain 5.0 dBi
N-S peak 23.1 dBi at Zen -11.9
N-S -3 dB beamwidth 12.6 deg.