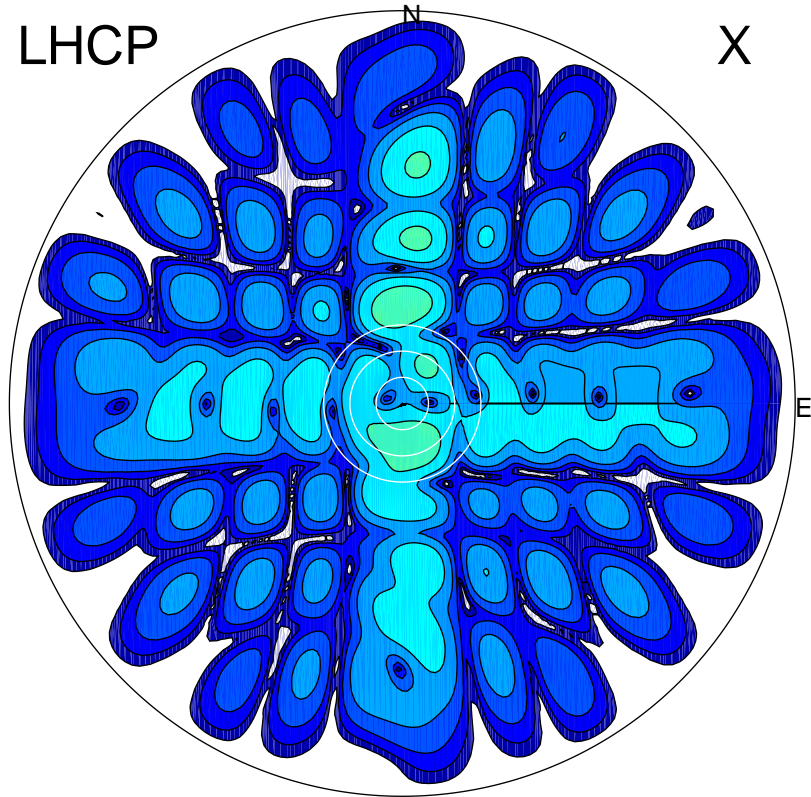


2011-07-07 08:41:00 A2 5.42300000 MHz 767.0 kW

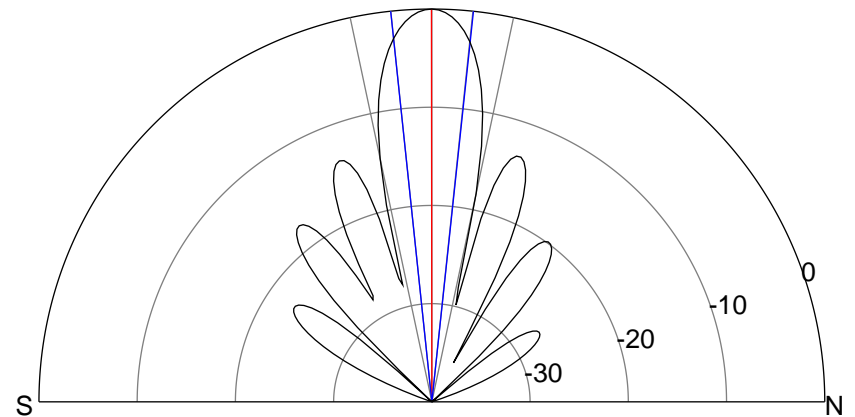
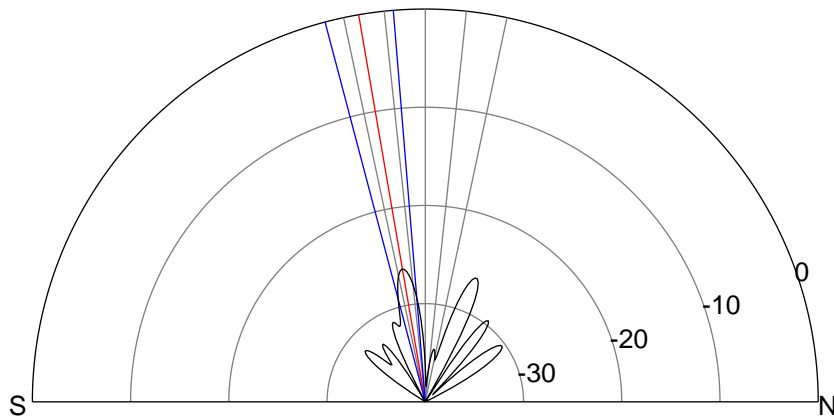
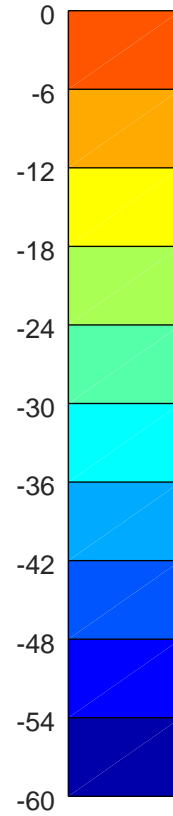
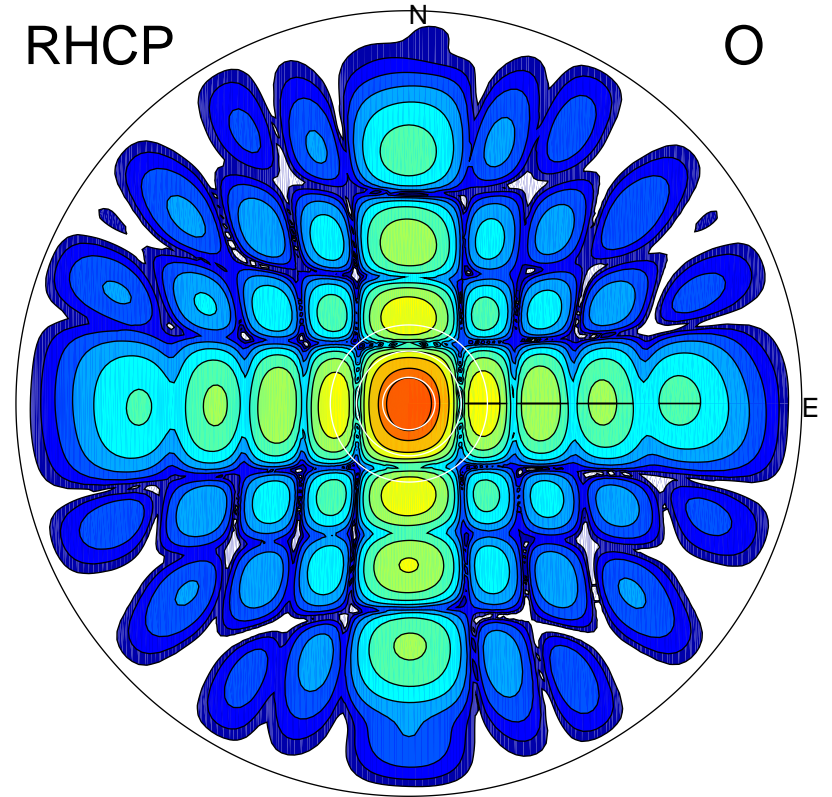
LHCP

X



RHCP

O



ERP 0.5 MW

Peak gain -1.6 dBi at Az 166 Zen 10
RHCP gain 15.3 dBi
N-S peak -2.1 dBi at Zen -9.8
N-S -3 dB beamwidth 10.1 deg.

ERP 202.3 MW

Peak gain 24.2 dBi at Az 44 Zen 0
LHCP gain -12.2 dBi
N-S peak 24.2 dBi at Zen -0.1
N-S -3 dB beamwidth 12.1 deg.