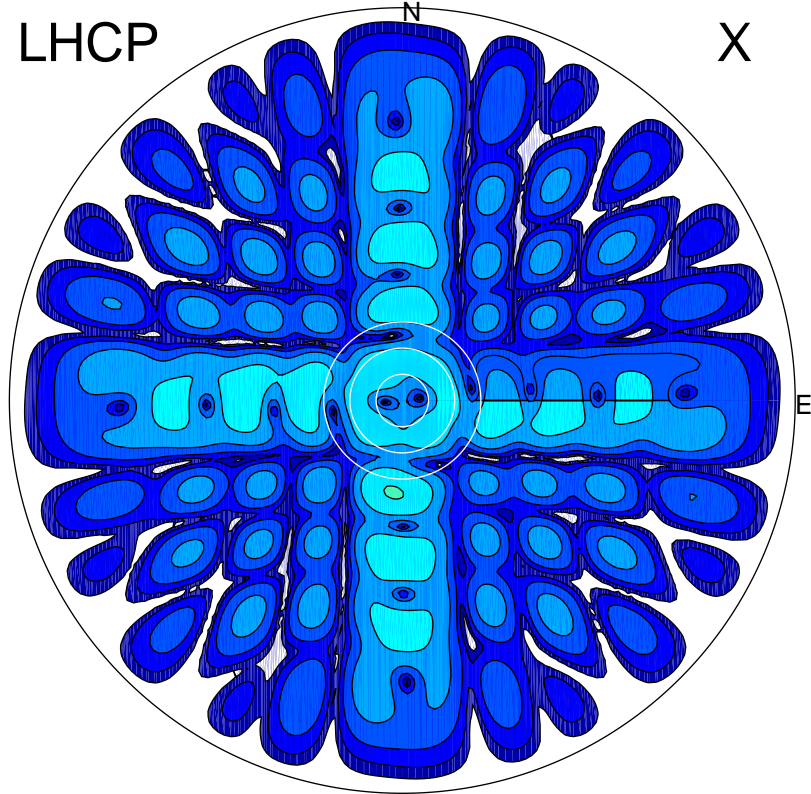


2011-07-05 08:54:02 A2 5.42300000 MHz 925.0 kW

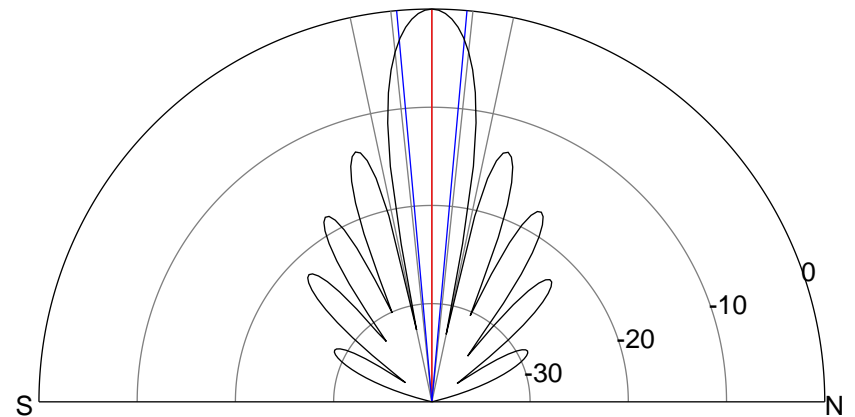
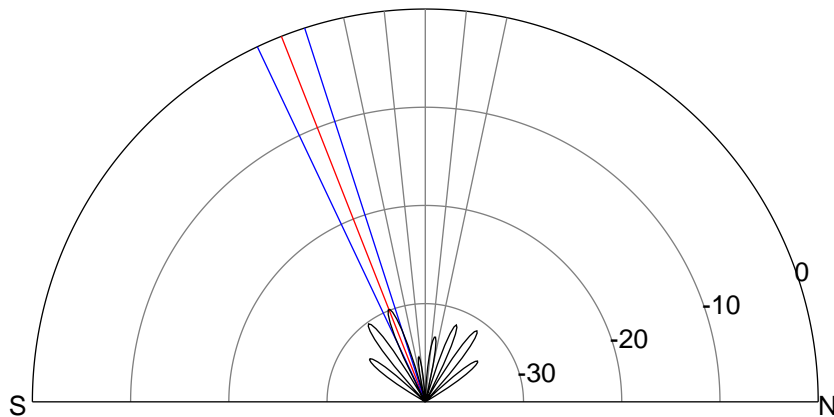
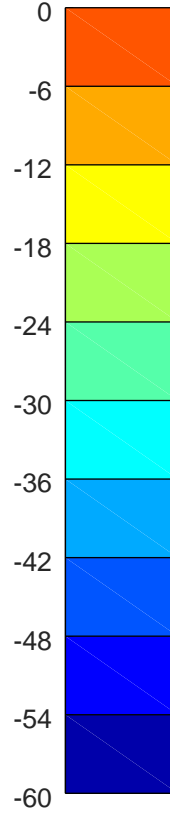
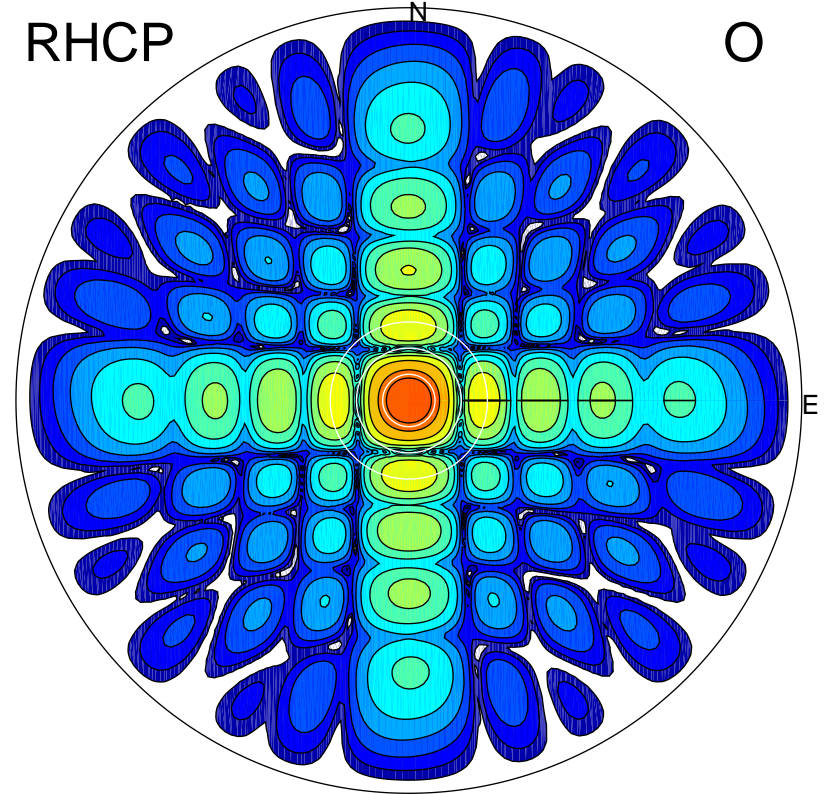
LHCP

X



RHCP

O



ERP 0.3 MW

Peak gain -4.7 dBi at Az 185 Zen 21
RHCP gain 6.5 dBi
N-S peak -4.9 dBi at Zen -21.5
N-S -3 dB beamwidth 7.4 deg.

ERP 287.3 MW

Peak gain 24.9 dBi at Az 27 Zen 0
LHCP gain -16.3 dBi
N-S peak 24.9 dBi at Zen -0.0
N-S -3 dB beamwidth 10.3 deg.