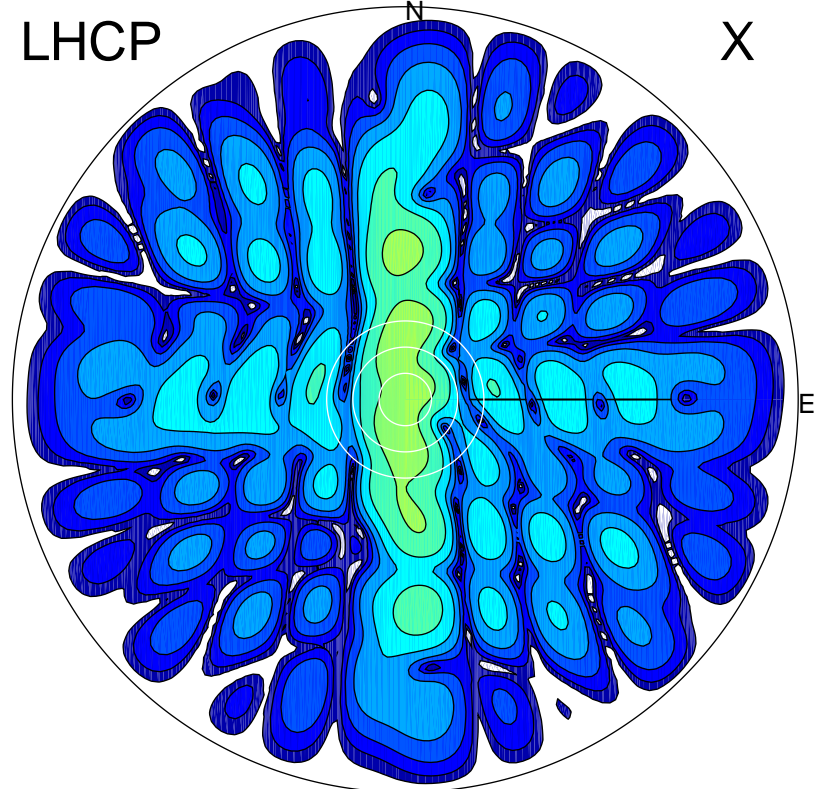


2011-07-04 15:03:10 A2 5.42300000 MHz 860.0 kW

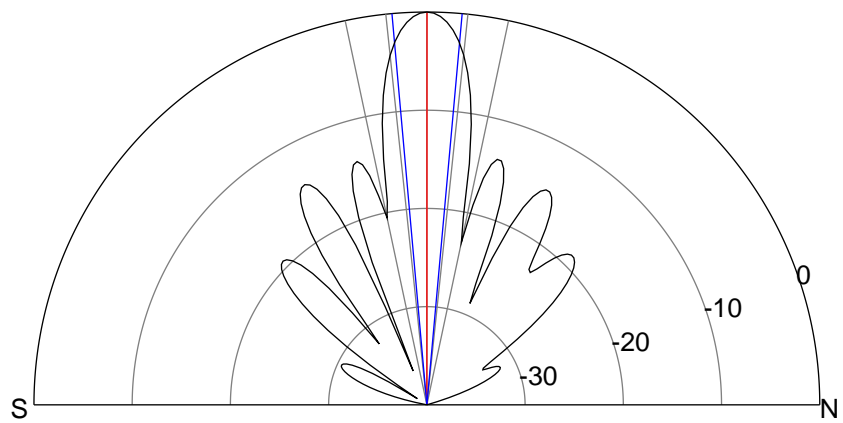
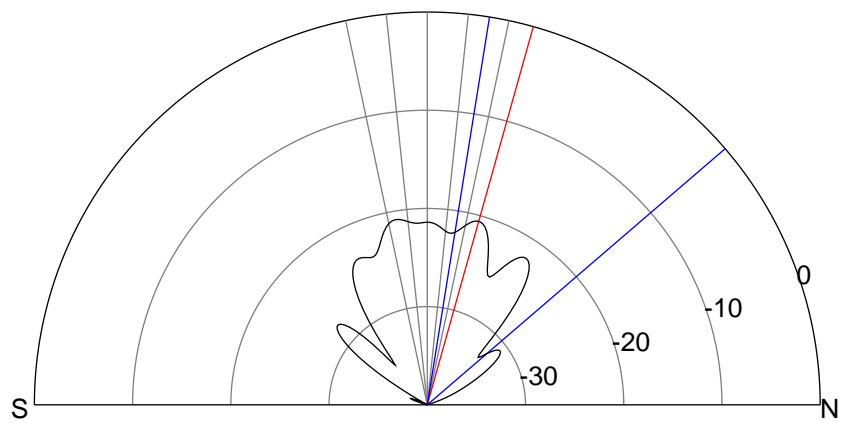
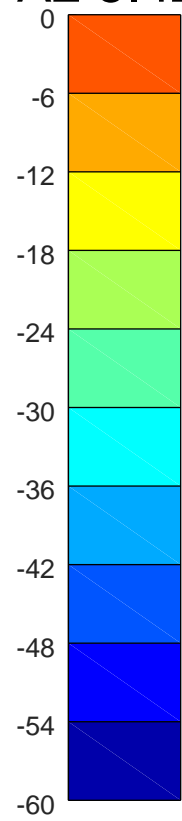
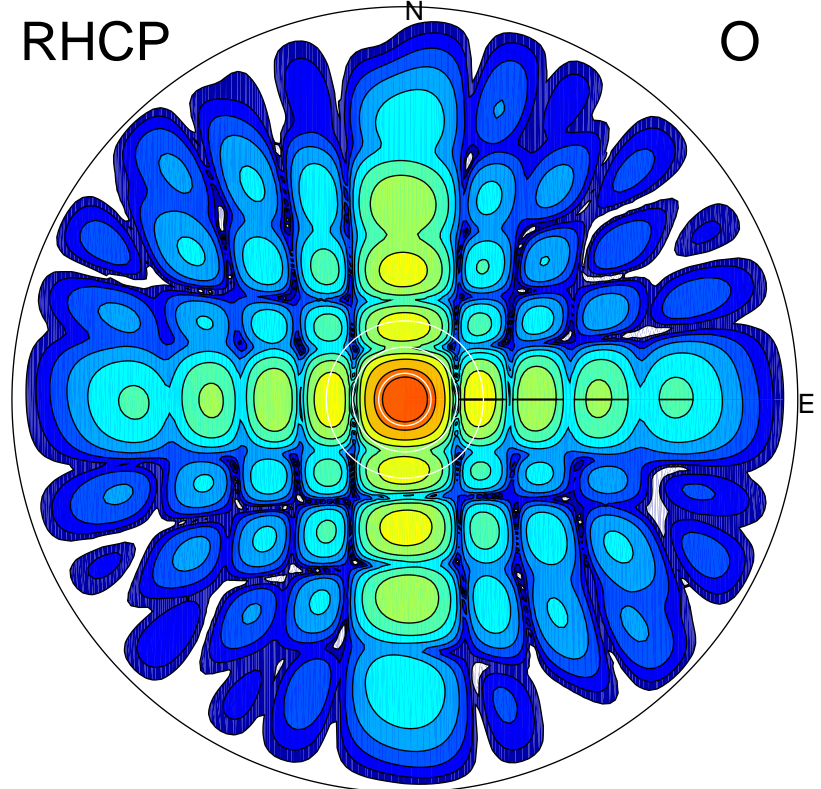
LHCP

X



RHCP

O



ERP 2.2 MW

Peak gain 4.0 dBi at Az 2 Zen 16
RHCP gain 10.5 dBi
N-S peak 4.0 dBi at Zen 15.7
N-S -3 dB beamwidth 40.2 deg.

ERP 248.7 MW

Peak gain 24.6 dBi at Az 81 Zen 0
LHCP gain 3.2 dBi
N-S peak 24.6 dBi at Zen 0.0
N-S -3 dB beamwidth 10.3 deg.