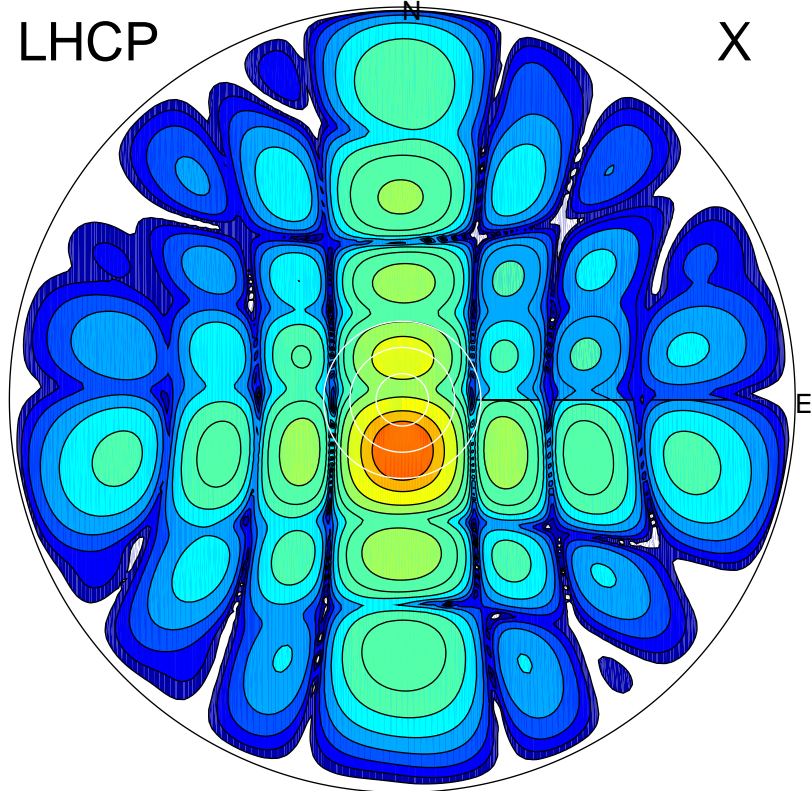


2010-09-21 17:30:04 A2 4.04000000 MHz 778.0 kW

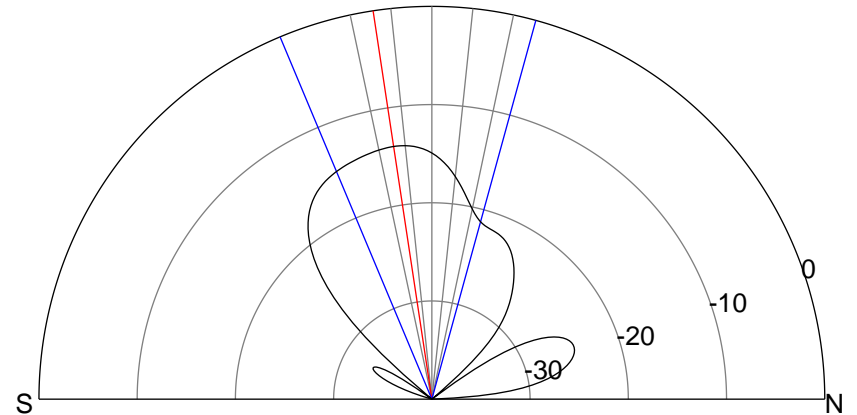
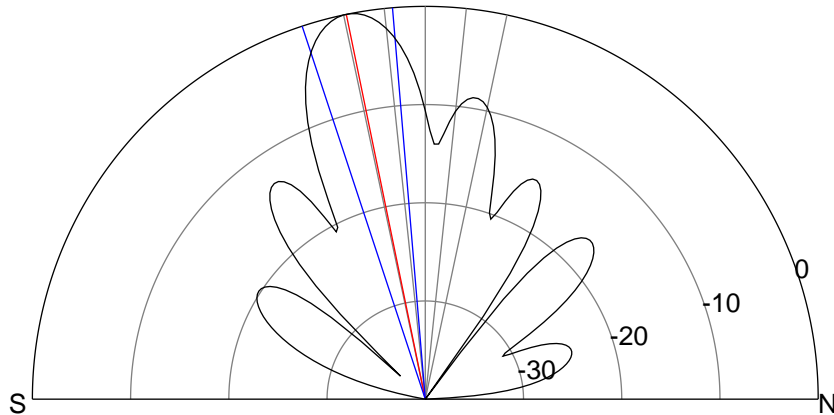
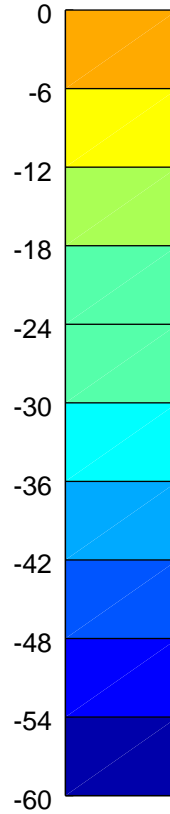
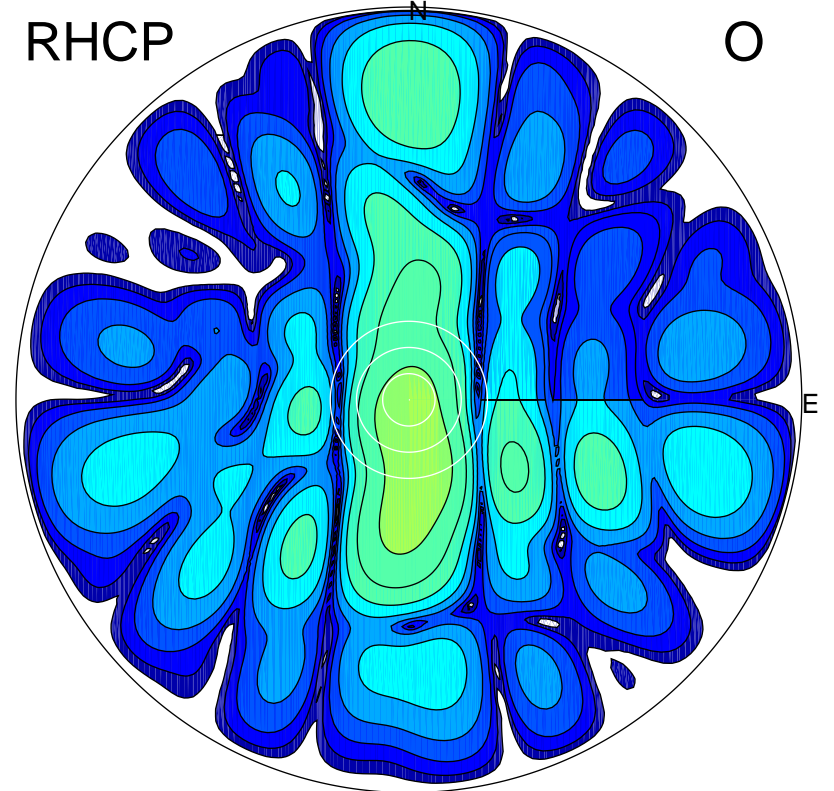
LHCP

X



RHCP

O



ERP 115.9 MW

Peak gain 21.7 dBi at Az 180 Zen 12
RHCP gain 7.7 dBi
N-S peak 21.7 dBi at Zen -11.6
N-S -3 dB beamwidth 13.5 deg.

ERP 4.8 MW

Peak gain 7.9 dBi at Az 171 Zen 13
LHCP gain 21.4 dBi
N-S peak 7.8 dBi at Zen -8.6
N-S -3 dB beamwidth 38.1 deg.