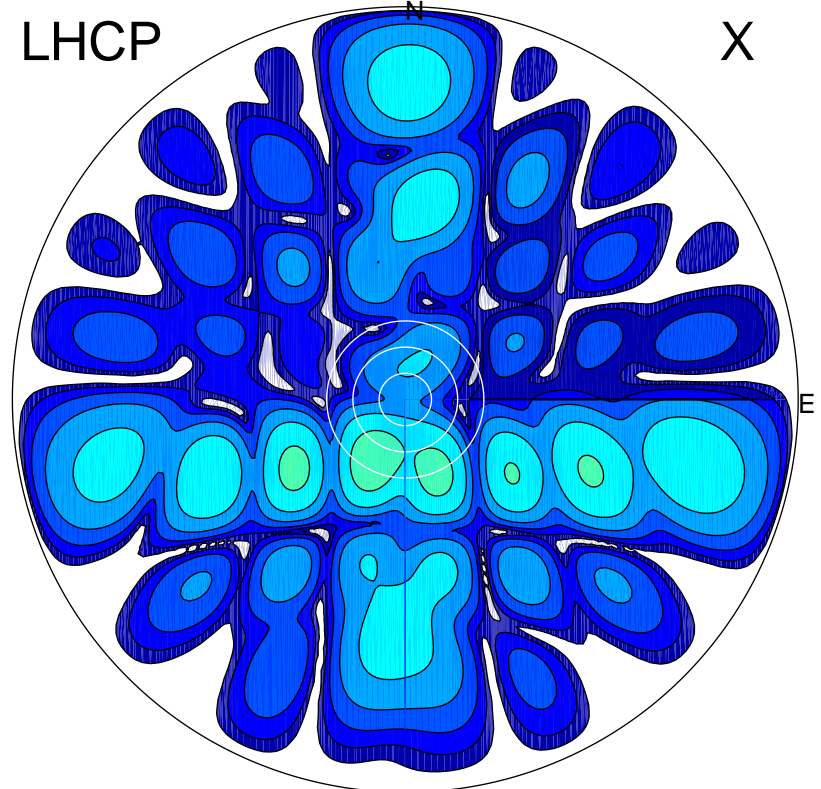


2008-01-08 12:18:02 A2 4.04000000 MHz 954.0 kW

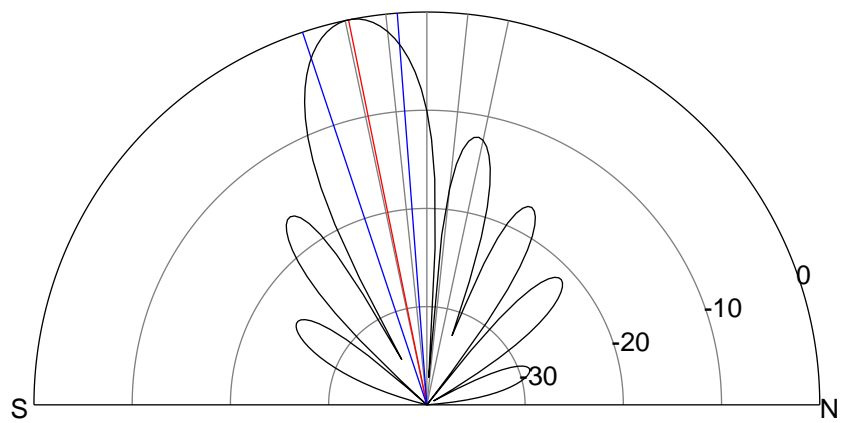
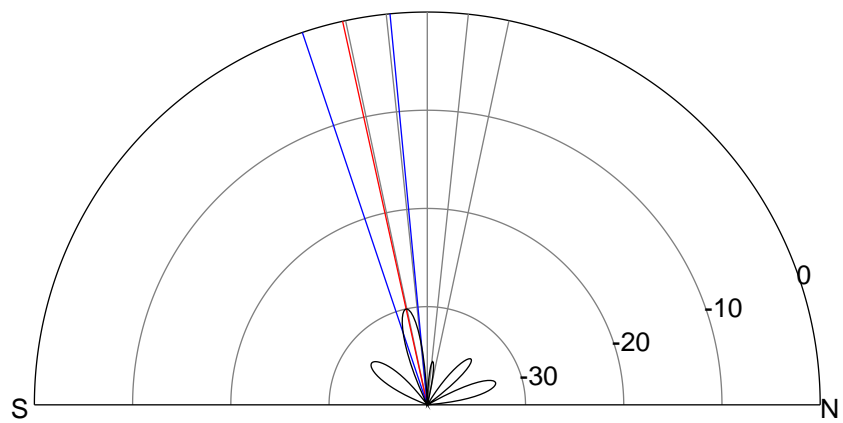
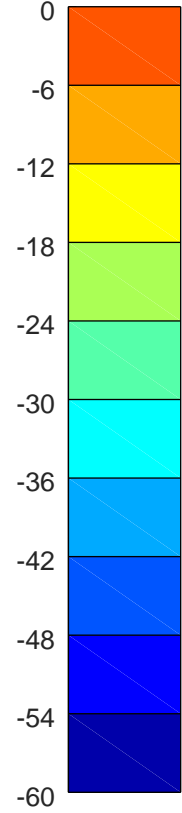
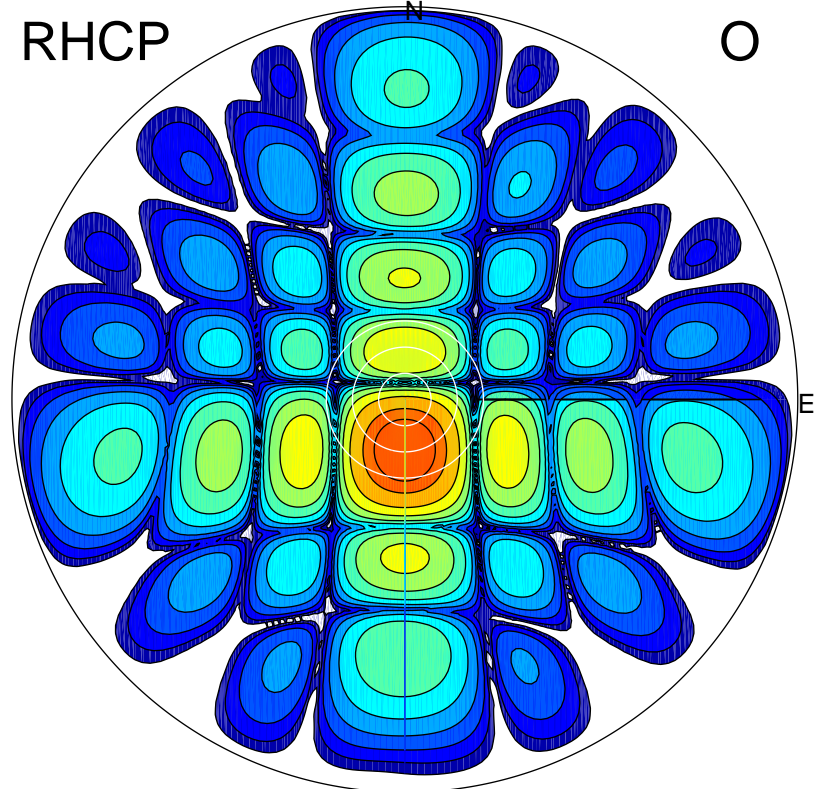
LHCP

X



RHCP

O



### ERP 0.4 MW

Peak gain -4.2 dBi at Az 208 Zen 16  
RHCP gain 18.6 dBi  
N-S peak -7.6 dBi at Zen -12.4  
N-S -3 dB beamwidth 13.1 deg.

### ERP 165.4 MW

Peak gain 22.4 dBi at Az 179 Zen 11  
LHCP gain -7.8 dBi  
N-S peak 22.4 dBi at Zen -11.5  
N-S -3 dB beamwidth 14.1 deg.