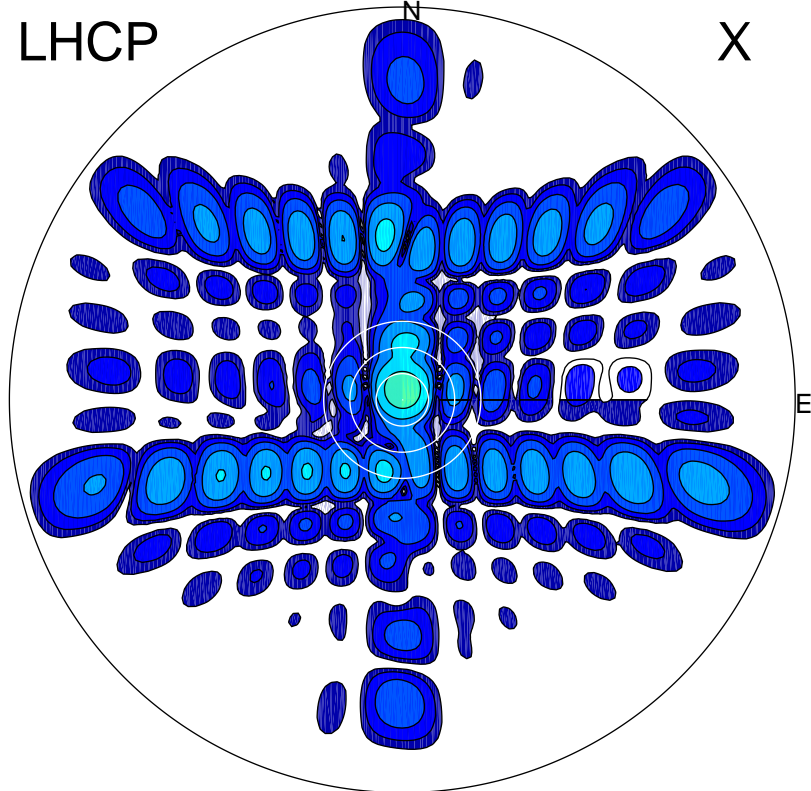


2001-11-12 18:07:00 A1 5.42300000 MHz 914.0 kW

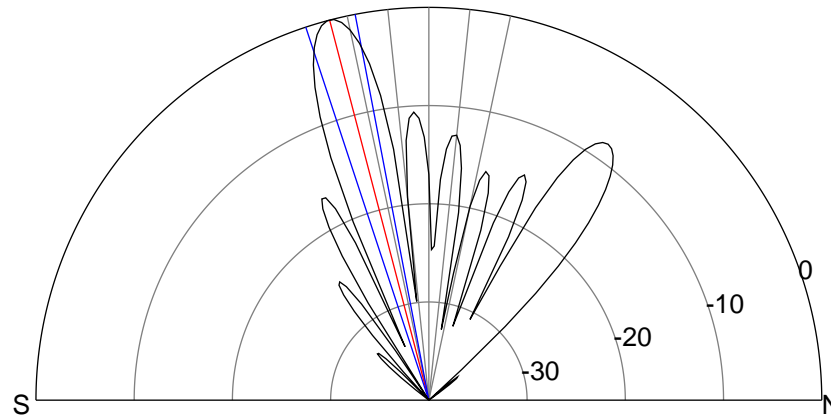
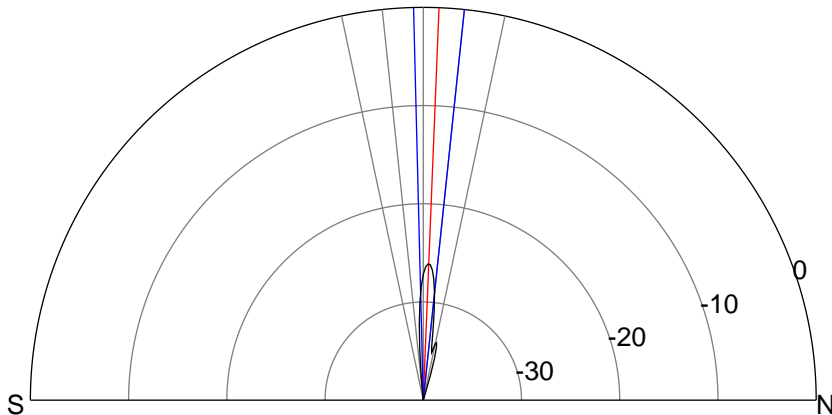
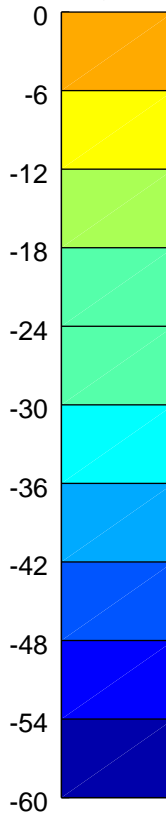
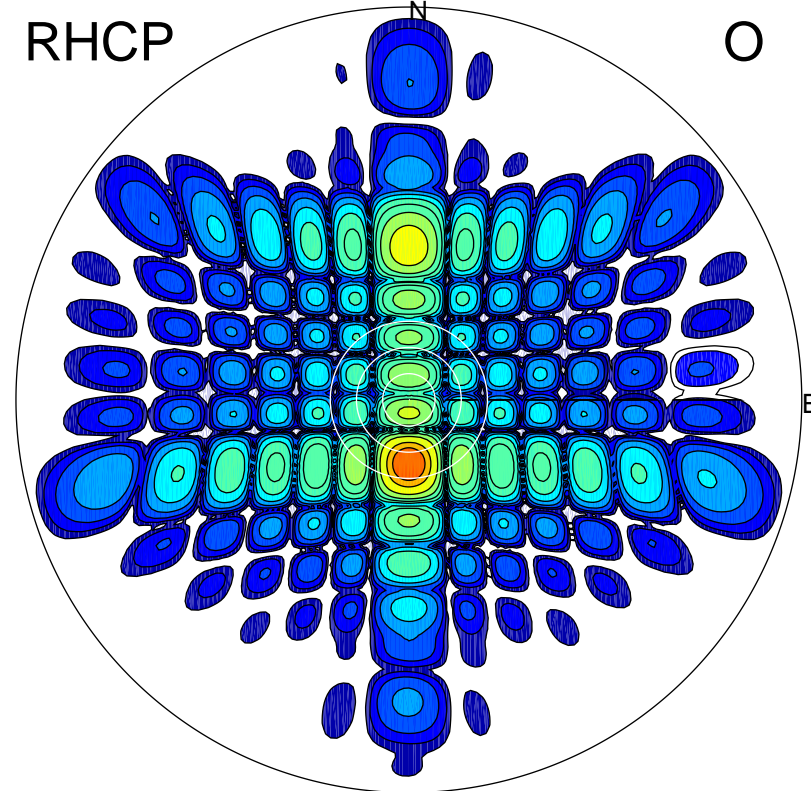
LHCP

X



RHCP

O



### ERP 1.1 MW

Peak gain 0.9 dBi at Az 358 Zen 2  
RHCP gain 2.8 dBi  
N-S peak 1.0 dBi at Zen 2.3  
N-S -3 dB beamwidth 7.4 deg.

### ERP 464.3 MW

Peak gain 27.1 dBi at Az 180 Zen 15  
LHCP gain -16.6 dBi  
N-S peak 27.1 dBi at Zen -14.6  
N-S -3 dB beamwidth 7.4 deg.