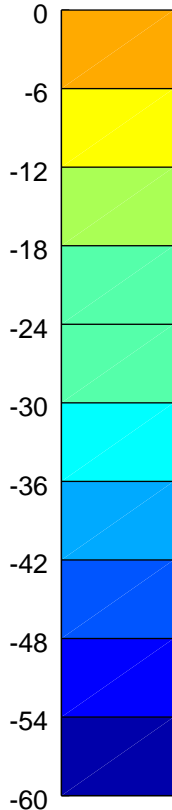
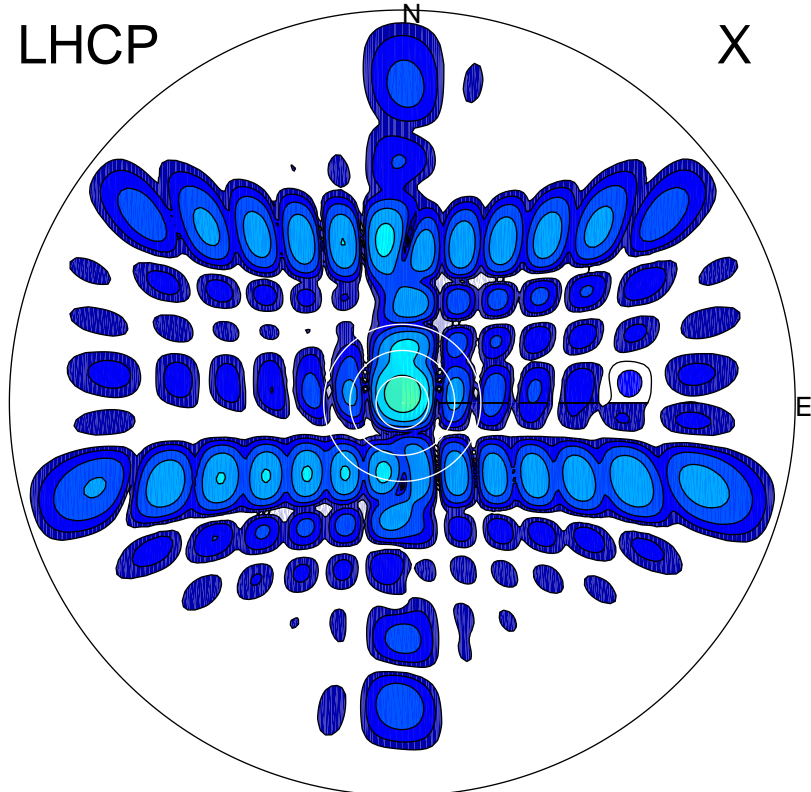


2001-11-12 17:34:39 A1 5.42300000 MHz 921.0 kW

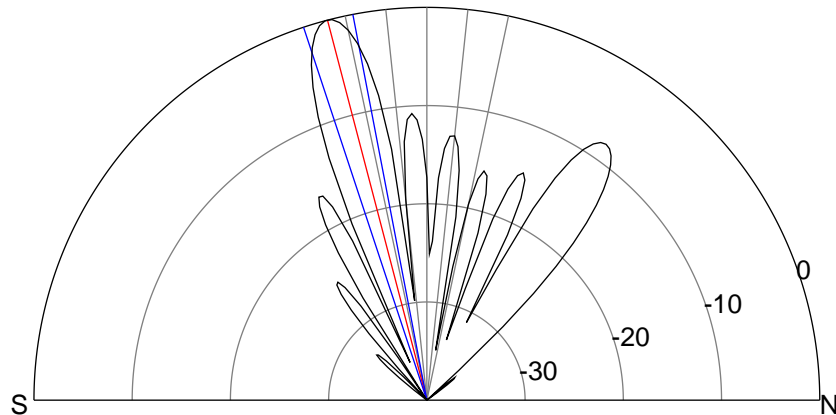
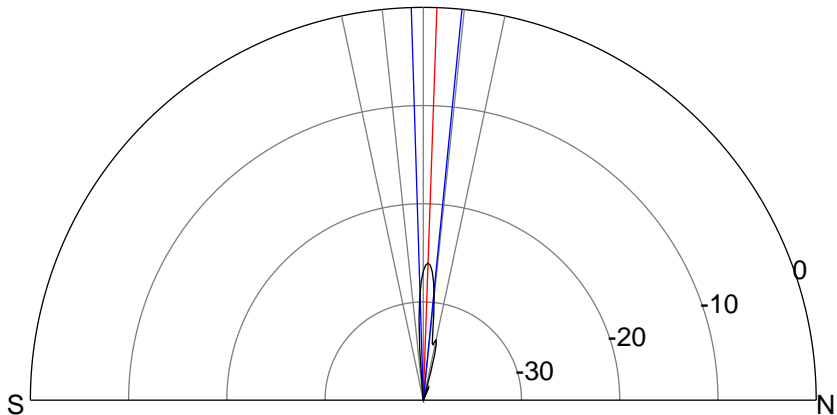
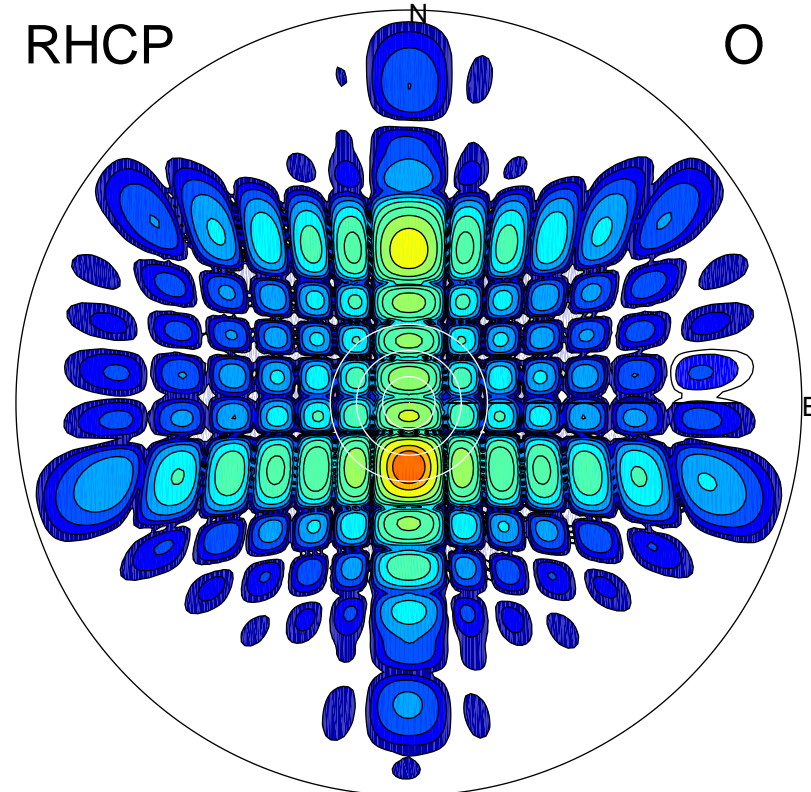
LHCP

X



RHCP

O



### ERP 1.2 MW

Peak gain 1.0 dBi at Az 358 Zen 2  
RHCP gain 3.3 dBi  
N-S peak 1.0 dBi at Zen 2.0  
N-S -3 dB beamwidth 7.4 deg.

### ERP 469.0 MW

Peak gain 27.1 dBi at Az 180 Zen 15  
LHCP gain -18.0 dBi  
N-S peak 27.1 dBi at Zen -14.7  
N-S -3 dB beamwidth 7.4 deg.