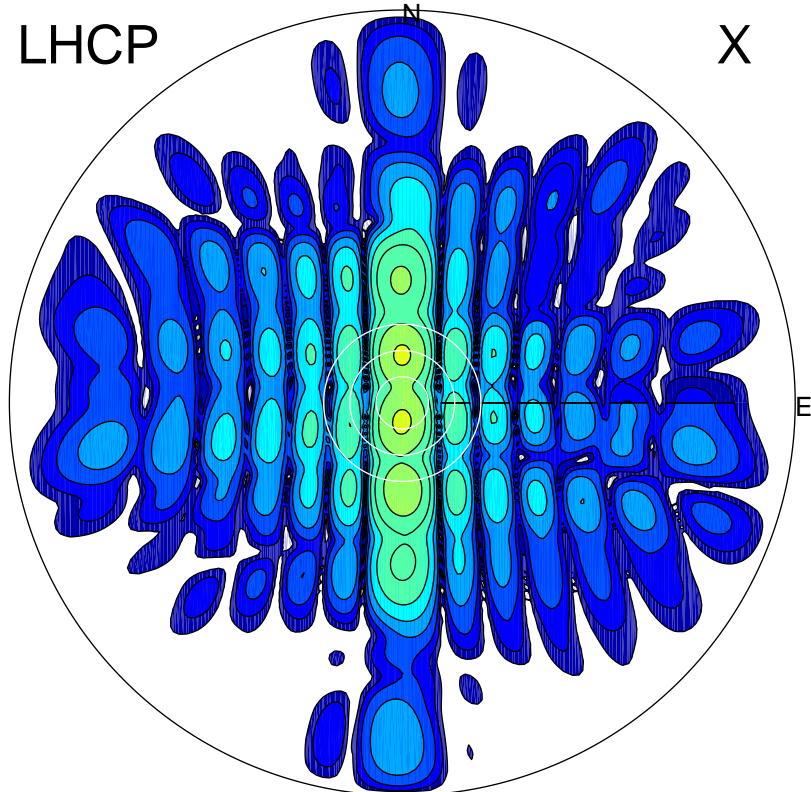


2001-11-12 17:25:26 A1 5.42300000 MHz 934.0 kW

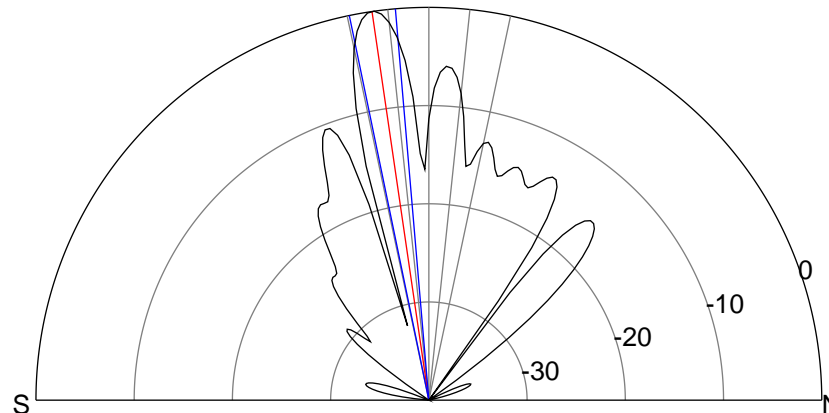
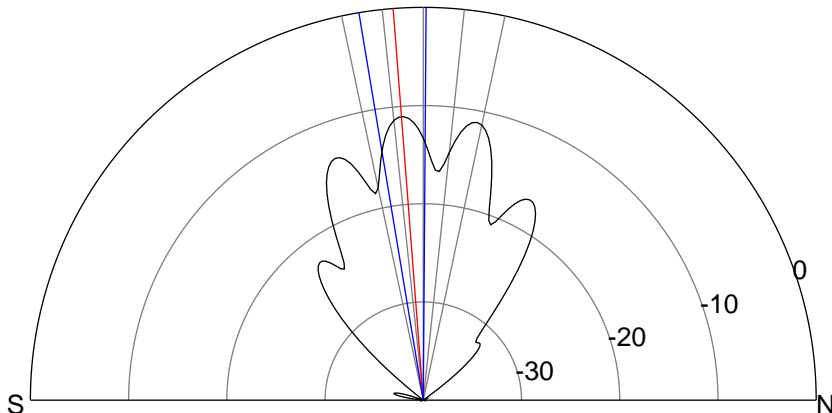
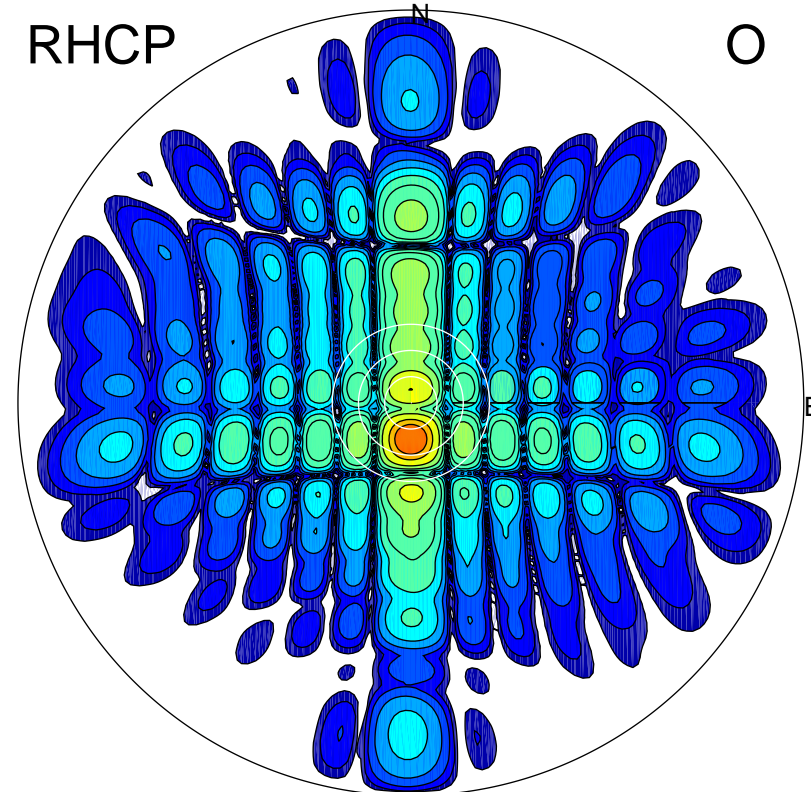
LHCP

X



RHCP

O



### ERP 30.0 MW

Peak gain 15.1 dBi at Az 182 Zen 4  
RHCP gain 20.8 dBi  
N-S peak 15.1 dBi at Zen -4.4  
N-S -3 dB beamwidth 9.8 deg.

### ERP 381.5 MW

Peak gain 26.1 dBi at Az 179 Zen 8  
LHCP gain 13.4 dBi  
N-S peak 26.1 dBi at Zen -8.3  
N-S -3 dB beamwidth 6.8 deg.