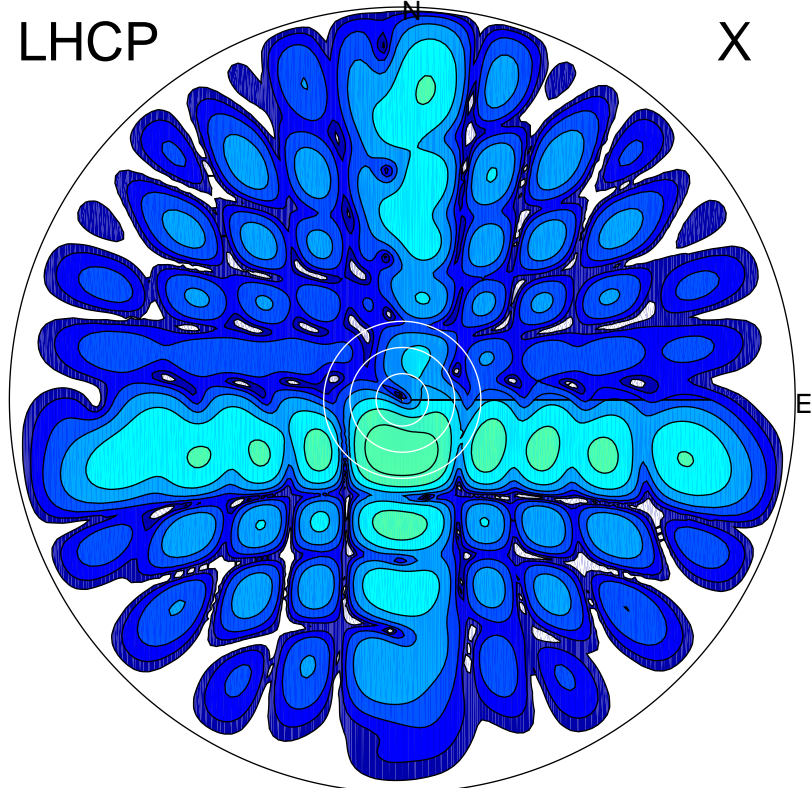


2001-11-12 15:14:00 A2 5.42300000 MHz 966.0 kW

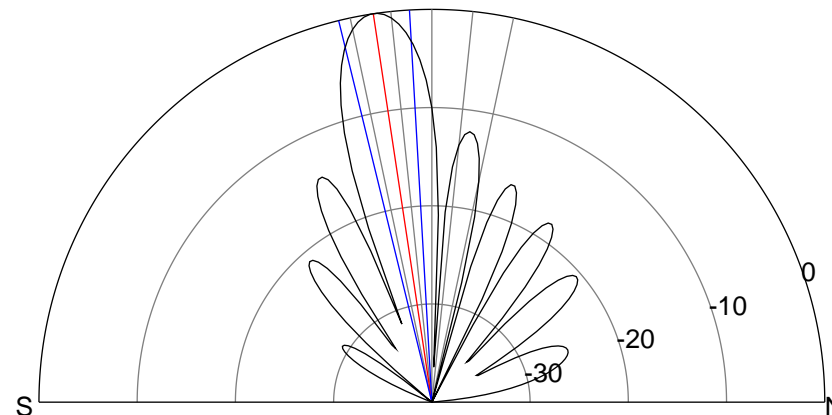
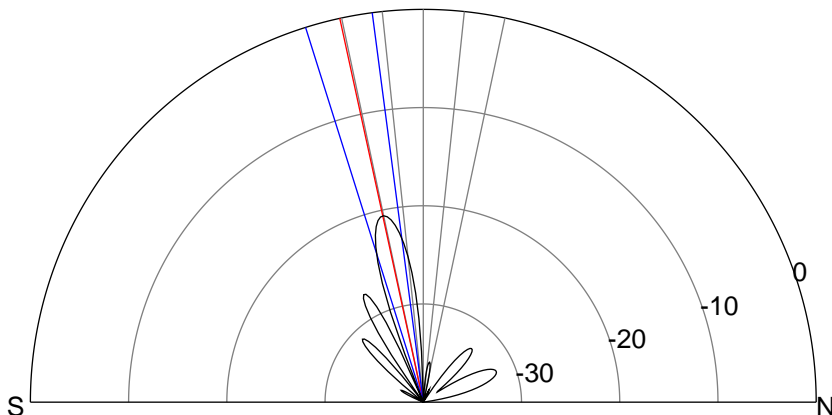
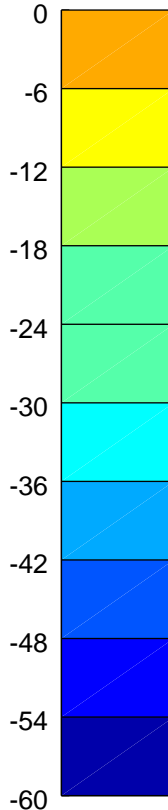
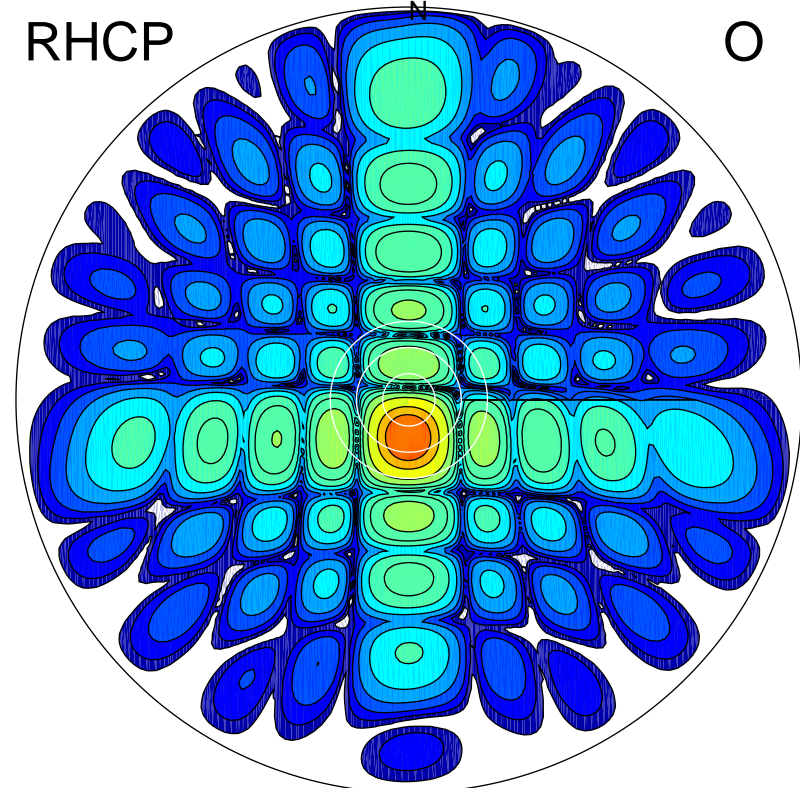
LHCP

X



RHCP

O



ERP 2.6 MW

Peak gain 4.3 dBi at Az 191 Zen 12
RHCP gain 23.2 dBi
N-S peak 4.1 dBi at Zen -12.3
N-S -3 dB beamwidth 10.0 deg.

ERP 285.2 MW

Peak gain 24.7 dBi at Az 180 Zen 9
LHCP gain 2.9 dBi
N-S peak 24.7 dBi at Zen -8.6
N-S -3 dB beamwidth 10.5 deg.